

Student Transitions to BC Public Post-Secondary Institutions - 2009/10 Province - Public and Independent Schools Combined

Preface

This report includes data from the BC Ministry of Education (MED) K-12 system combined with BC post-secondary data compiled by the Student Transitions Project (STP).

Definitions used are in accordance with MED public reporting data definitions and consequently figures may differ from those stated within STP reports.

This report includes all graduates, using a definition that is more broad than the “eligible to graduate” definition used in many STP reports. It also includes all non-graduates, both those who transitioned to a BC public post-secondary institution and those who did not (STP excludes non-graduate non-transitioners).

Student Transitions to BC Public Post-Secondary Institutions - 2009/10 Province - Public and Independent Schools Combined

Grade 12 Graduates by Post-Secondary Institution Entry Year

K-12 Graduation Year	Post-Secondary Entry Year					Total Grade 12 Graduates (#)
	2005/06 (# and %)	2006/07 (# and %)	2007/08 (# and %)	2008/09 (# and %)	2009/10 (# and %)	
2004/05	22523 (49.1%)	4944 (10.8%)	2268 (4.9%)	1394 (3.0%)	1037 (2.3%)	45835
2005/06		23409 (49.7%)	5129 (10.9%)	2382 (5.1%)	1393 (3.0%)	47067
2006/07			23045 (50.5%)	5179 (11.4%)	2203 (4.8%)	45592
2007/08				24052 (51.3%)	5410 (11.5%)	46923
2008/09					24767 (52.1%)	47575

K-12 Non-Graduates by Post-Secondary Institution Entry Year

Year of Last Enrolment in the K-12 System	Post-Secondary Entry Year					Total Non- Graduates (#) ¹
	2005/06 (# and %)	2006/07 (# and %)	2007/08 (# and %)	2008/09 (# and %)	2009/10 (# and %)	
2004/05	2921 (9.2%)	1017 (3.2%)	816 (2.6%)	722 (2.3%)	597 (1.9%)	31818
2005/06		3052 (8.9%)	1260 (3.7%)	970 (2.8%)	698 (2.0%)	34354
2006/07			2746 (8.5%)	1167 (3.6%)	839 (2.6%)	32243
2007/08				3124 (9.2%)	1215 (3.6%)	33806
2008/09					3441 (9.7%)	35342

¹ Non-graduate totals come from a different data source than the rest of the figures in this report because non-graduate, non-transition data are not collected by the Student Transitions Project.

Over time, the number of non-graduates may decrease as these students complete graduation requirements and are counted as part of the graduate population.

Student Transitions to BC Public Post-Secondary Institutions - 2009/10 Province - Public and Independent Schools Combined

Grade 12 Graduates by Demographic Group

Demographic Group	Grade 12 Graduates of School Year		Year of Transition to a Post-Secondary Institution							
	2005/06		2006/07		2007/08		2008/09		2009/10	
	(#)	(%)	(#)	(%)	(#)	(%)	(#)	(%)	(#)	(%)
All Students	47067	100	23409	50	5129	11	2382	5	1393	3
Female	23882	100	12421	52	2563	11	1065	4	671	3
Male	23185	100	10988	47	2566	11	1317	6	722	3
Aboriginal	2821	100	947	34	313	11	209	7	134	5
ESL	831	100	447	54	86	10	38	5	14	2
Special Needs	4064	100	2033	50	425	10	194	5	122	3

K-12 Non-Graduates by Demographic Group

Demographic Group	K-12 Non-Graduates of Year of Last Enrolment		Year of Transition to a Post-Secondary Institution							
	2005/06 ¹		2006/07		2007/08		2008/09		2009/10	
	(#)	(%)	(#)	(%)	(#)	(%)	(#)	(%)	(#)	(%)
All Students	34354	100	3052	9	1260	4	970	3	698	2
Female	17016	100	1657	10	614	4	448	3	332	2
Male	17338	100	1395	8	646	4	522	3	366	2
Aboriginal	4018	100	479	12	300	7	253	6	181	5
ESL	2605	100	108	4	33	1	27	1	24	1
Special Needs	3145	100	306	10	129	4	106	3	83	3

¹ Non-graduate totals come from a different data source than the rest of the figures in this report because non-graduate, non-transition data are not collected by the Student Transitions Project.

Over time, the number of non-graduates may decrease as these students complete graduation requirements and are counted as part of the graduate population.

Student Transitions to BC Public Post-Secondary Institutions - 2009/10 Province - Public and Independent Schools Combined

Grade 12 Graduates Entering Community Colleges

Demographic Group	Grade 12 Graduates of School Year		Year of Transition to a Community College ¹							
	2005/06		2006/07		2007/08		2008/09		2009/10	
	(#)	(%)	(#)	(%)	(#)	(%)	(#)	(%)	(#)	(%)
All Students	47067	100	6751	14	2266	5	1137	2	715	2
Female	23882	100	3693	15	1209	5	570	2	364	2
Male	23185	100	3058	13	1057	5	567	2	351	2
Aboriginal	2821	100	454	16	176	6	121	4	89	3
ESL	831	100	135	16	30	4	12	1	6	1
Special Needs	4064	100	550	14	199	5	109	3	66	2

K-12 Non-Graduates Entering Community Colleges

Demographic Group	K-12 Non-Graduates of Year of Last Enrolment		Year of Transition to a Community College ¹							
	2005/06 ²		2006/07		2007/08		2008/09		2009/10	
	(#)	(%)	(#)	(%)	(#)	(%)	(#)	(%)	(#)	(%)
All Students	34354	100	1720	5	781	2	587	2	424	1
Female	17016	100	976	6	401	2	282	2	218	1
Male	17338	100	744	4	380	2	305	2	206	1
Aboriginal	4018	100	287	7	198	5	162	4	120	3
ESL	2605	100	65	2	25	1	17	1	15	1
Special Needs	3145	100	202	6	85	3	64	2	60	2

¹ In recent years, numerous BC post-secondary institutions have changed their name and sector designation. Because of these changes, and to ensure consistency over time, each institution is reported under its most recent name and sector designation.

Okanagan University College ceased operations after 2004/05. It had a sector designation of "university college," which no longer exists. Its enrolments are included under the "teaching intensive university" sector designation.

² Non-graduate totals come from a different data source than the rest of the figures in this report because non-graduate, non-transition data are not collected by the Student Transitions Project.

Over time, the number of non-graduates may decrease as these students complete graduation requirements and are counted as part of the graduate population.

Student Transitions to BC Public Post-Secondary Institutions - 2009/10 Province - Public and Independent Schools Combined

Grade 12 Graduates Entering Institutes

Demographic Group	Grade 12 Graduates of School Year		Year of Transition to an Institute ¹							
	2005/06		2006/07		2007/08		2008/09		2009/10	
	(#)	(%)	(#)	(%)	(#)	(%)	(#)	(%)	(#)	(%)
All Students	47067	100	1370	3	616	1	331	1	174	0
Female	23882	100	293	1	118	0	48	0	45	0
Male	23185	100	1077	5	498	2	283	1	129	1
Aboriginal	2821	100	55	2	17	1	24	1	12	0
ESL	831	100	25	3	11	1	10	1	2	0
Special Needs	4064	100	95	2	54	1	26	1	17	0

K-12 Non-Graduates Entering Institutes

Demographic Group	K-12 Non-Graduates of Year of Last Enrolment		Year of Transition to an Institute ¹							
	2005/06 ²		2006/07		2007/08		2008/09		2009/10	
	(#)	(%)	(#)	(%)	(#)	(%)	(#)	(%)	(#)	(%)
All Students	34354	100	507	1	178	1	149	0	84	0
Female	17016	100	193	1	56	0	42	0	22	0
Male	17338	100	314	2	122	1	107	1	62	0
Aboriginal	4018	100	46	1	26	1	28	1	17	0
ESL	2605	100	6	0	3	0	1	0	1	0
Special Needs	3145	100	8	0	8	0	12	0	6	0

¹ In recent years, numerous BC post-secondary institutions have changed their name and sector designation. Because of these changes, and to ensure consistency over time, each institution is reported under its most recent name and sector designation.

Okanagan University College ceased operations after 2004/05. It had a sector designation of "university college," which no longer exists. Its enrolments are included under the "teaching intensive university" sector designation.

² Non-graduate totals come from a different data source than the rest of the figures in this report because non-graduate, non-transition data are not collected by the Student Transitions Project.

Over time, the number of non-graduates may decrease as these students complete graduation requirements and are counted as part of the graduate population.

Student Transitions to BC Public Post-Secondary Institutions - 2009/10 Province - Public and Independent Schools Combined

Grade 12 Graduates Entering Research-Intensive Universities

Demographic Group	Grade 12 Graduates of School Year		Year of Transition to a Research-Intensive University ¹							
	2005/06		2006/07		2007/08		2008/09		2009/10	
	(#)	(%)	(#)	(%)	(#)	(%)	(#)	(%)	(#)	(%)
All Students	47067	100	8618	18	705	1	210	0	85	0
Female	23882	100	4691	20	399	2	111	0	46	0
Male	23185	100	3927	17	306	1	99	0	39	0
Aboriginal	2821	100	121	4	15	1	2	0	4	0
ESL	831	100	170	20	30	4	4	0	3	0
Special Needs	4064	100	1014	25	67	2	16	0	6	0

K-12 Non-Graduates Entering Research-Intensive Universities

Demographic Group	K-12 Non-Graduates of Year of Last Enrolment		Year of Transition to a Research-Intensive University ¹							
	2005/06 ²		2006/07		2007/08		2008/09		2009/10	
	(#)	(%)	(#)	(%)	(#)	(%)	(#)	(%)	(#)	(%)
All Students	34354	100	80	0	36	0	37	0	31	0
Female	17016	100	48	0	21	0	20	0	14	0
Male	17338	100	32	0	15	0	17	0	17	0
Aboriginal	4018	100	4	0	2	0	2	0	1	0
ESL	2605	100	6	0	1	0	3	0	2	0
Special Needs	3145	100	3	0	1	0	1	0	2	0

¹ In recent years, numerous BC post-secondary institutions have changed their name and sector designation. Because of these changes, and to ensure consistency over time, each institution is reported under its most recent name and sector designation.

Okanagan University College ceased operations after 2004/05. It had a sector designation of "university college," which no longer exists. Its enrolments are included under the "teaching intensive university" sector designation.

² Non-graduate totals come from a different data source than the rest of the figures in this report because non-graduate, non-transition data are not collected by the Student Transitions Project.

Over time, the number of non-graduates may decrease as these students complete graduation requirements and are counted as part of the graduate population.

Student Transitions to BC Public Post-Secondary Institutions - 2009/10 Province - Public and Independent Schools Combined

Grade 12 Graduates Entering Teaching-Intensive Universities

Demographic Group	Grade 12 Graduates of School Year		Year of Transition to a Teaching-Intensive University ¹							
	2005/06		2006/07		2007/08		2008/09		2009/10	
	(#)	(%)	(#)	(%)	(#)	(%)	(#)	(%)	(#)	(%)
All Students	47067	100	6670	14	1542	3	704	1	419	1
Female	23882	100	3744	16	837	4	336	1	216	1
Male	23185	100	2926	13	705	3	368	2	203	1
Aboriginal	2821	100	317	11	105	4	62	2	29	1
ESL	831	100	117	14	15	2	12	1	3	0
Special Needs	4064	100	374	9	105	3	43	1	33	1

K-12 Non-Graduates Entering Teaching-Intensive Universities

Demographic Group	K-12 Non-Graduates of Year of Last Enrolment		Year of Transition to a Teaching-Intensive University ¹							
	2005/06 ²		2006/07		2007/08		2008/09		2009/10	
	(#)	(%)	(#)	(%)	(#)	(%)	(#)	(%)	(#)	(%)
All Students	34354	100	745	2	265	1	197	1	159	0
Female	17016	100	440	3	136	1	104	1	78	0
Male	17338	100	305	2	129	1	93	1	81	0
Aboriginal	4018	100	142	4	74	2	61	2	43	1
ESL	2605	100	31	1	4	0	6	0	6	0
Special Needs	3145	100	93	3	35	1	29	1	15	0

¹ In recent years, numerous BC post-secondary institutions have changed their name and sector designation. Because of these changes, and to ensure consistency over time, each institution is reported under its most recent name and sector designation.

Okanagan University College ceased operations after 2004/05. It had a sector designation of "university college," which no longer exists. Its enrolments are included under the "teaching intensive university" sector designation.

² Non-graduate totals come from a different data source than the rest of the figures in this report because non-graduate, non-transition data are not collected by the Student Transitions Project.

Over time, the number of non-graduates may decrease as these students complete graduation requirements and are counted as part of the graduate population.

Student Transitions to BC Public Post-Secondary Institutions - 2009/10 Province - Public and Independent Schools Combined

Grade 12 Graduates Enrolled in Post-Secondary within 3 Years

Grade 12 Graduates by Post-Secondary Program Area¹ (within 3 years of graduating K-12)

Grade 12 Graduation Year	Developmental Level		PSE Level		Total	
	(#)	(%)	(#)	(%)	(#)	(%)
2002/03	1520	5	29115	95	30635	100
2003/04	1587	6	26959	94	28546	100
2004/05	1464	5	28271	95	29735	100
2005/06	1495	5	29425	95	30920	100
2006/07	1585	5	28842	95	30427	100

¹ A student is categorized as enrolled in either a developmental program or a post-secondary education ("PSE") level program, based on the first identified enrolment after graduating from K-12.

K-12 Non-Graduates Enrolled in Post-Secondary within 3 Years

K-12 Non-Graduates by Post-Secondary Program Area² (within 3 years of leaving K-12)

Year of Last Enrolment in the K-12 System	Developmental Level		PSE Level		Total	
	(#)	(%)	(#)	(%)	(#)	(%)
2002/03	1044	27	2792	73	3836	100
2003/04	1322	25	3970	75	5292	100
2004/05	1132	24	3622	76	4754	100
2005/06	1346	25	3936	75	5282	100
2006/07	1278	27	3474	73	4752	100

² A student is categorized as enrolled in either a developmental program or a post-secondary education ("PSE") level program, based on the first identified enrolment after K-12.

Student Transitions to BC Public Post-Secondary Institutions - 2009/10 Province - Public and Independent Schools Combined

Grade 12 Graduates Enrolled in Post-Secondary within 3 Years

Grade 12 Graduate Enrolments by Post-Secondary Sector¹

Grade 12 Graduation Year	Community College (%)	Institute (%)	Research- Intensive University (%)	Teaching- Intensive University (%)	Total (%)
2002/03	30.6	7.8	27.0	34.6	100.0
2003/04	31.0	7.9	27.8	33.3	100.0
2004/05	33.2	7.3	29.9	29.7	100.0
2005/06	32.8	7.5	30.8	28.8	100.0
2006/07	33.5	6.7	32.3	27.6	100.0

K-12 Non-Graduates Enrolled in Post-Secondary within 3 Years

K-12 Non-Graduate Enrolments by Post-Secondary Sector¹

Year of Last Enrolment in the K-12 System	Community College (%)	Institute (%)	Research- Intensive University (%)	Teaching- Intensive University (%)	Total (%)
2002/03	48.8	16.8	4.1	30.3	100.0
2003/04	53.1	17.6	3.2	26.1	100.0
2004/05	56.0	16.4	3.7	23.9	100.0
2005/06	58.5	15.8	2.9	22.9	100.0
2006/07	60.1	13.8	2.9	23.2	100.0

¹ In recent years, numerous BC post-secondary institutions have changed their name and sector designation. Because of these changes, and to ensure consistency over time, each institution is reported under its most recent name and sector designation.

Okanagan University College ceased operations after 2004/05. It had a sector designation of "university college," which no longer exists. Its enrolments are included under the "teaching intensive university" sector designation.

Student Transitions to BC Public Post-Secondary Institutions - 2009/10 Province - Public and Independent Schools Combined

Grade 12 Graduate Transitions into Post-Secondary within 3 Years¹

Sector	Post-Secondary Institution	Grade 12 Graduation Year 2006/07 (%)
Community College	Camosun College	4.9
	College Of New Caledonia	2.6
	College Of The Rockies	1.3
	Douglas College	6.1
	Langara College	5.2
	North Island College	1.9
	Northern Lights College	1.0
	Northwest Community College	1.3
	Okanagan College	5.2
	Selkirk College	1.6
	Vancouver Community College	2.4
	Subtotal	33.5
Institute	British Columbia Institute Of Technology	6.0
	Justice Institute Of British Columbia	0.5
	Nicola Valley Institute Of Technology	0.1
	Subtotal	6.7
Research-Intensive University	Simon Fraser University	11.0
	University Of British Columbia	11.8
	University Of British Columbia Okanagan	2.6
	University Of Northern British Columbia	1.2
	University Of Victoria	5.7
	Subtotal	32.3
Teaching-Intensive University	Capilano University	4.0
	Emily Carr University Of Art + Design	0.7
	Kwantlen Polytechnic University	8.5
	Royal Roads University	0.0
	Thompson Rivers University	4.5
	University Of The Fraser Valley	5.6
	Vancouver Island University	4.3
	Subtotal	27.6
	Total	100.0

¹ In recent years, numerous BC post-secondary institutions have changed their name and sector designation. Because of these changes, and to ensure consistency over time, each institution is reported under its most recent name and sector designation.

Student Transitions to BC Public Post-Secondary Institutions - 2009/10 Province - Public and Independent Schools Combined

K-12 Non-Graduate Transitions into Post-Secondary within 3 Years¹

Sector	Post-Secondary Institution	Year of Last Enrolment in K-12 2006/07 (%)
Community College	Camosun College	4.8
	College Of New Caledonia	4.9
	College Of The Rockies	3.3
	Douglas College	9.2
	Langara College	4.2
	North Island College	4.0
	Northern Lights College	3.6
	Northwest Community College	4.7
	Okanagan College	5.5
	Selkirk College	2.4
	Vancouver Community College	13.6
	Subtotal	60.1
Institute	British Columbia Institute Of Technology	11.0
	Justice Institute Of British Columbia	1.8
	Nicola Valley Institute Of Technology	1.1
	Subtotal	13.8
Research-Intensive University	Simon Fraser University	1.1
	University Of British Columbia	1.0
	University Of British Columbia Okanagan	0.1
	University Of Northern British Columbia	0.2
	University Of Victoria	0.4
	Subtotal	2.9
Teaching-Intensive University	Capilano University	3.2
	Emily Carr University Of Art + Design	0.2
	Kwantlen Polytechnic University	5.4
	Royal Roads University	0.0
	Thompson Rivers University	4.6
	University Of The Fraser Valley	2.6
	Vancouver Island University	7.1
	Subtotal	23.2
	Total	100.0

¹ In recent years, numerous BC post-secondary institutions have changed their name and sector designation. Because of these changes, and to ensure consistency over time, each institution is reported under its most recent name and sector designation.

Student Transitions to BC Public Post-Secondary Institutions - 2009/10 Province - Public and Independent Schools Combined

Post-Secondary Credentials of Grade 12 Graduates

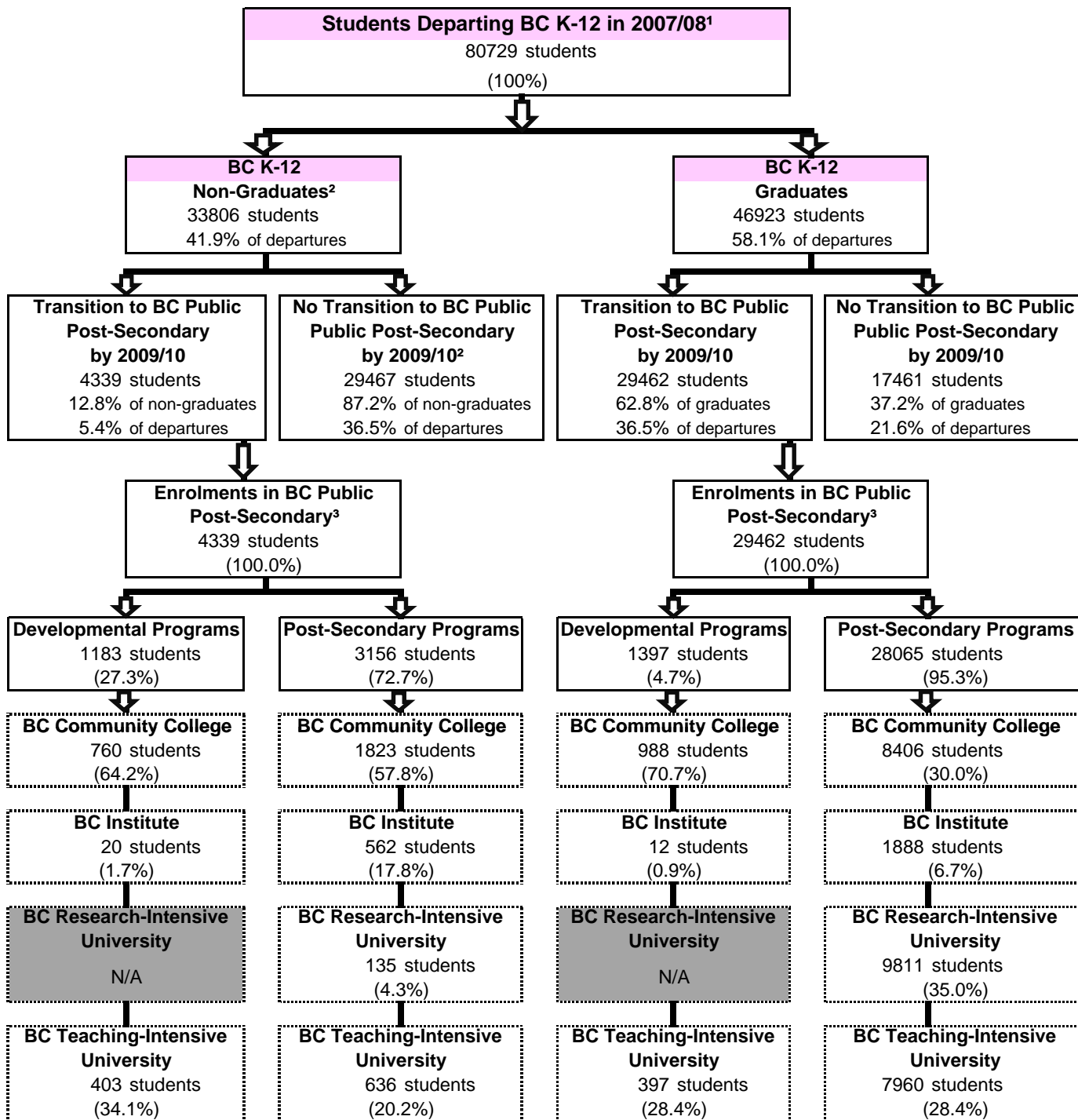
Post-Secondary Credential	PSI School Year 2009/10	
	(#)	(%)
Advanced Diploma	137	0.4
Apprenticeship	739	2.3
Associate Degree	720	2.3
Bachelors Degree	14538	45.6
Certificate	8038	25.2
Developmental	139	0.4
Diploma	4877	15.3
Doctorate	124	0.4
First Professional Degree	335	1.1
Graduate Certificate	23	0.1
Graduate Diploma	51	0.2
Masters Degree	1149	3.6
Other	18	0.1
Post-Degree Certificate	28	0.1
Post-Degree Diploma	301	0.9
Short Certificate	298	0.9
Total Post-Secondary Credentials	31515	100.0

Post-Secondary Credentials of K-12 Non-Graduates

Post-Secondary Credential	PSI School Year 2009/10	
	(#)	(%)
Advanced Diploma	7	0.2
Apprenticeship	155	4.7
Associate Degree	41	1.2
Bachelors Degree	635	19.1
Certificate	1469	44.2
Developmental	368	11.1
Diploma	413	12.4
Doctorate	9	0.3
First Professional Degree	11	0.3
Graduate Certificate	2	0.1
Graduate Diploma	1	0.0
Masters Degree	72	2.2
Other	1	0.0
Post-Degree Certificate	6	0.2
Post-Degree Diploma	14	0.4
Short Certificate	102	3.1
Total Post-Secondary Credentials	3306	100.0

Student Transitions to BC Public Post-Secondary Institutions - 2009/10 Province - Public and Independent Schools Combined

Annual Outflow of Students, K-12



¹ This allows for the analysis of two complete years of transition data.

² Non-graduate totals come from a different data source than the rest of the figures in this report because non-graduate, non-transition data are not collected by the Student Transitions Project.
Includes all grade levels, unadjusted for outmigration. Over time, the number of non-graduates may decrease as students complete graduation requirements and are counted as part of the graduate population.

³ In recent years, numerous BC post-secondary institutions have changed their name and sector designation. Because of these changes, and to ensure consistency over time, each institution is reported under its most recent name and sector designation.