

# Overview of Class Size and Composition in British Columbia Public Schools 2008/09

## School District 037 Delta

These class size data are current as of September 30, 2008 and have been verified by school districts.

---

### **PLEASE NOTE**

The Ministry makes small and continuous improvements to the quality of its data. Sometimes these changes result in differences from previously published reports. The data in this report are the most accurate data available at time of publication.

Ministry reports are available at <http://www.bced.gov.bc.ca/reporting/>

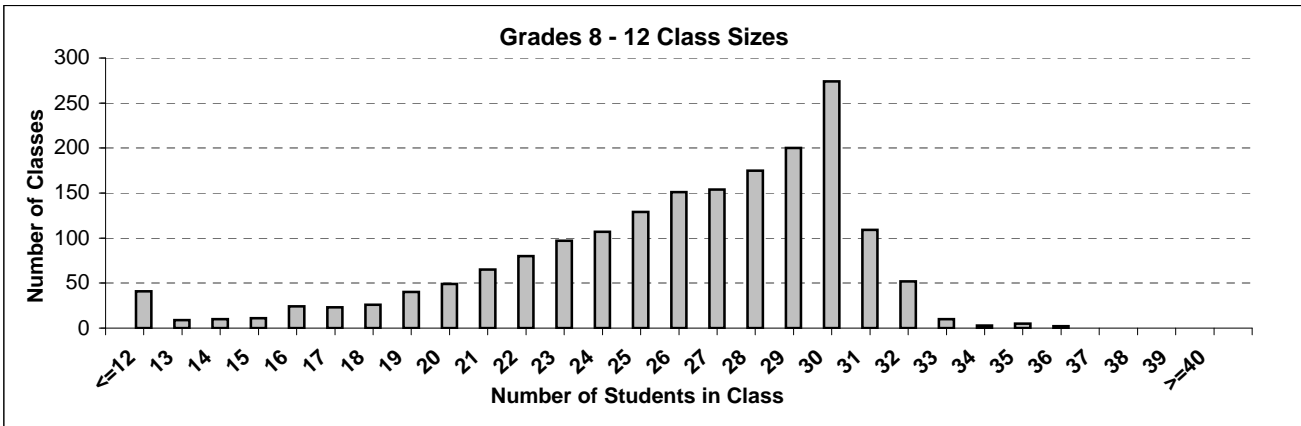
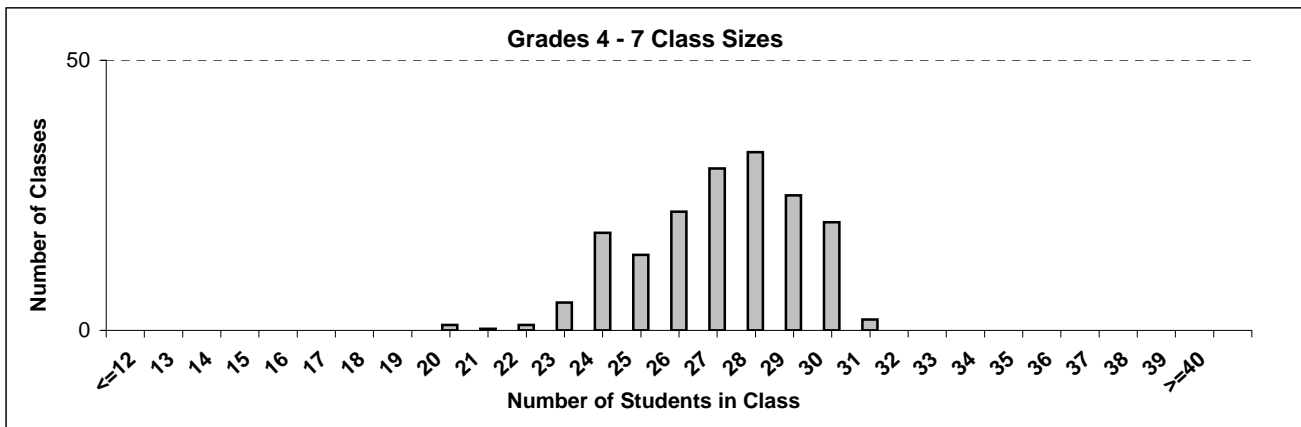
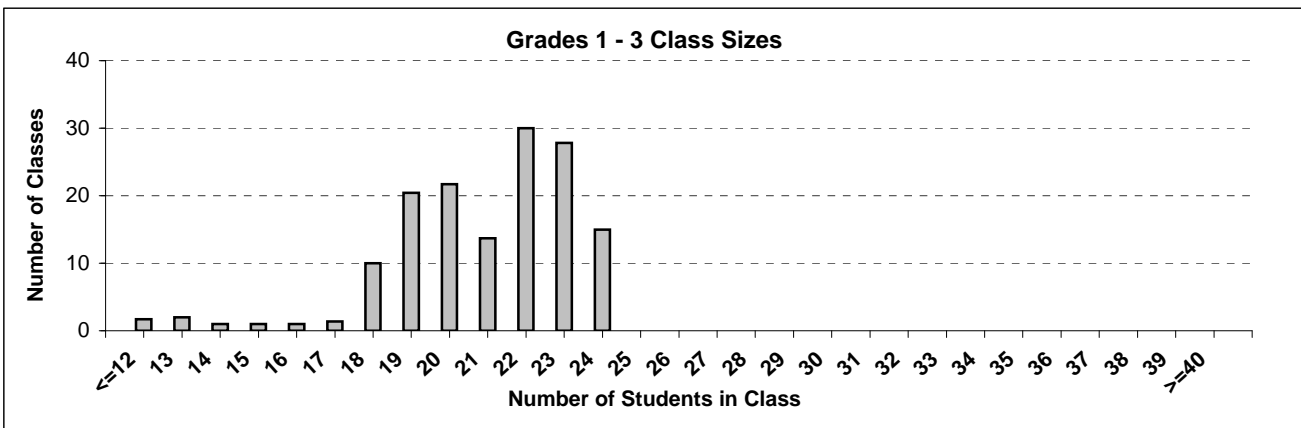
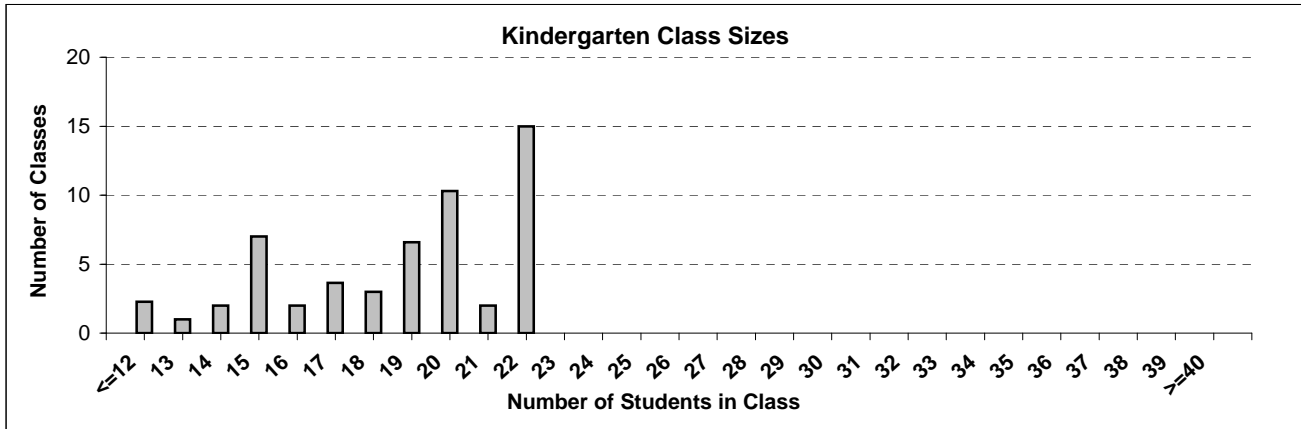
Contact the Information Department at [educ.reportingunit@gov.bc.ca](mailto:educ.reportingunit@gov.bc.ca)

---

# District Class Sizes

## 037 Delta

Source: Class size data collection (as of September 30) from standard BC public schools.



---

## District - Average Class Size

---

### 037 Delta

Source: Class size data collection (as of September 30) from standard BC public schools.

District - Average Class Size	Kindergarten	Grade 1 - 3	Grade 4 - 7	Grade 8 - 12
	18.6	20.9	27.1	25.8

Province - Average Class Size	Kindergarten	Grade 1 - 3	Grade 4 - 7	Grade 8 - 12
	17.7	20.6	25.8	24.4

Number of Reported Classes with Assigned Education Assistants	376
---	-----

Number of Reported Schools in School District	33
---	----

Number of Reported Classes in School District	2,219
---	-------

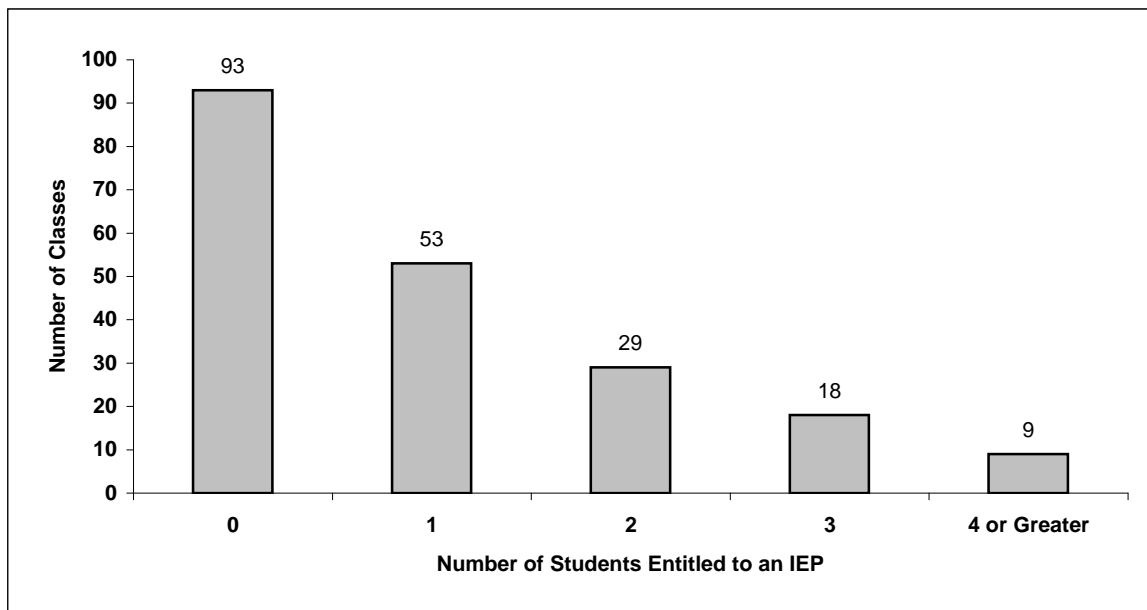
Number of Reported Classes in School District with more than 30 Students	183
--	-----

## District - Students Entitled to an Individual Education Plan (IEP)

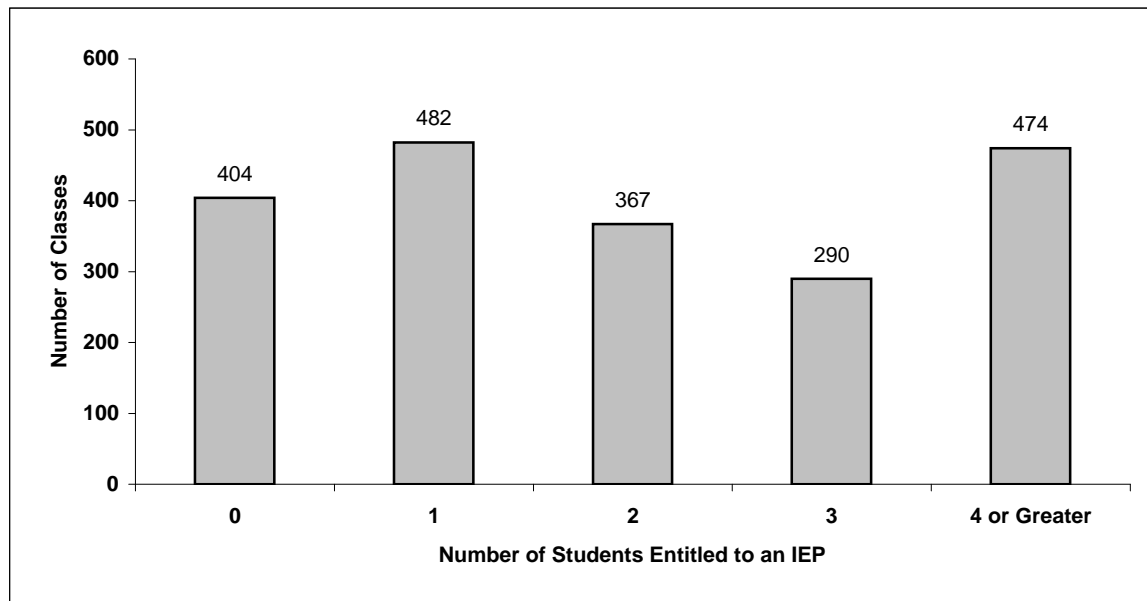
### 037 Delta

Source: Class size data collection (as of September 30) from standard BC public schools.

Grades K-3 - Number of Classes in District with 'X' Number of Students Entitled to an IEP



Grades 4-12 - Number of Classes in District with 'X' Number of Students Entitled to an IEP

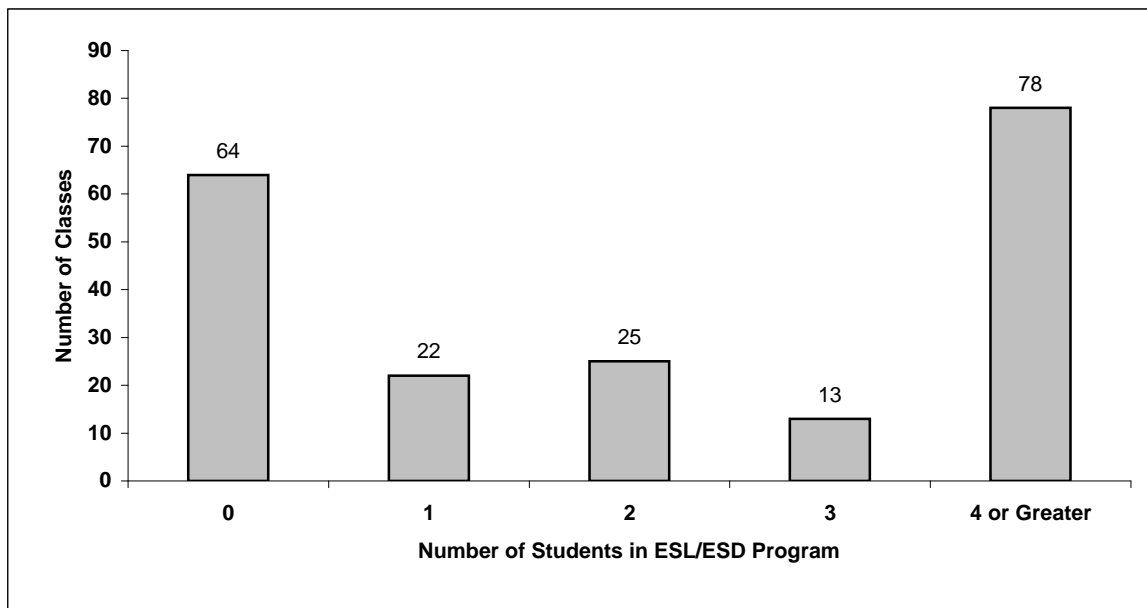


# District - Students in English as a Second Language/Dialect (ESL/ESD) Program

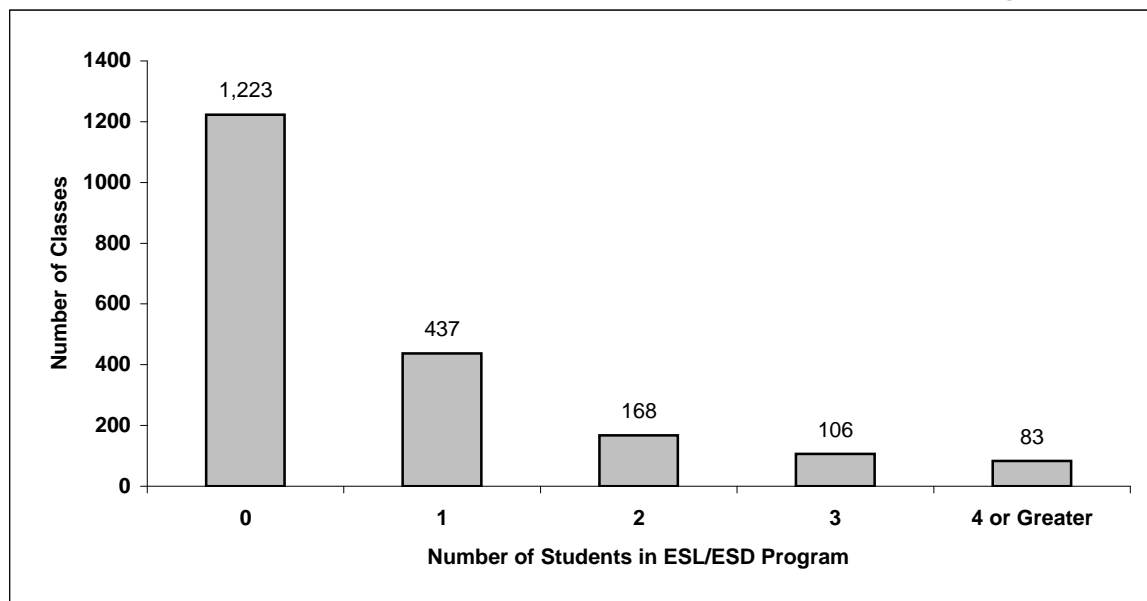
## 037 Delta

Source: Class size data collection (as of September 30) from standard BC public schools.

Grades K-3 - Number of Classes in District with 'X' Number of Students in ESL/ESD Program



Grades 4-12 - Number of Classes in District with 'X' Number of Students in ESL/ESD Program



## 037 Delta - Average Class Size by School

Source: Class size data collection (as of September 30) from standard BC public schools.

Ministry Code	School Name	Kindergarten	Grade 1 - 3	Grade 4 - 7	Grade 8 - 12
03737009	Annieville Elementary	21.5	21.8	27.8	-
03737019	Beach Grove Elementary	20.0	20.6	26.2	-
03737042	Boundary Beach Elementary	11.0	11.6	-	-
03737029	Brooke Elementary School	22.0	21.4	29.2	-
03737034	Burnsview Secondary	-	-	-	24.6
03737022	Chalmers Elementary	17.0	23.5	26.8	-
03737015	Cliff Drive Elementary	14.5	21.6	26.6	-
03737039	Cougar Canyon Elementary	20.7	23.3	29.0	-
03737010	Delta Manor Elementary	15.5	21.1	28.1	-
03737003	Delta Secondary	-	-	-	26.2
03737021	Delview Secondary	-	-	-	24.7
03737017	Devon Gardens Elementary	17.0	19.3	26.5	-
03737014	English Bluff Elementary	17.0	20.0	26.8	-
03737026	Gibson Elementary	20.0	21.4	27.0	-
03737024	Gray Elementary	21.0	21.0	24.9	-
03737025	Hawthorne Elementary	21.0	23.1	27.0	-
03737008	Heath Elementary	19.0	19.2	28.4	-
03737023	Hellings Elementary	21.5	20.6	27.1	-
03737035	Holly Elementary	22.0	19.7	28.1	-
03737030	Jarvis Elementary	21.0	16.4	25.9	-
03737001	Ladner Elementary	15.7	21.8	27.8	-
03737032	McCloskey Elementary	18.3	19.4	26.3	-
03737043	Neilson Grove Elementary	17.0	22.6	27.6	-
03737012	North Delta Secondary	-	-	-	26.0
03737027	Pebble Hill Traditional Elementary	12.0	20.5	25.4	-
03737041	Pinewood Elementary	20.9	22.3	25.7	-
03737033	Port Guichon Elementary	16.0	22.4	25.7	-
03737007	Richardson Elementary	17.0	20.8	28.0	-
03737038	Sands Secondary	-	-	-	24.7
03737040	Seaquam Secondary	-	-	-	26.4
03737037	South Delta Secondary	-	-	-	26.4
03737018	South Park Elementary	16.3	20.6	25.5	-
03737013	Sunshine Hills Elementary	20.3	22.4	27.8	-

## Glossary

Term	Definition / Notes
<b>English as a Second Language/Dialect (ESL/ESD) Program</b>	<ul style="list-style-type: none"> <li>• A program offered to students whose primary language(s) is/are other than English, and who may require additional services.</li> </ul>
<b>Gifted Student</b>	<ul style="list-style-type: none"> <li>• A student who has exceptional gifts or talents and is defined as Category P in the Special Education Performance Reporting Groups.</li> </ul>
<b>Grade</b>	<ul style="list-style-type: none"> <li>• The assigned grade of a student on September 30.</li> </ul>
<b>KH</b>	<ul style="list-style-type: none"> <li>• Kindergarten half-time</li> </ul>
<b>KF</b>	<ul style="list-style-type: none"> <li>• Kindergarten full-time</li> </ul>
<b>Number of Students</b>	<ul style="list-style-type: none"> <li>• Student population is calculated by headcount.</li> </ul>
<b>Student</b>	<ul style="list-style-type: none"> <li>• A person enrolled in a BC school. Student populations are calculated by headcount. Students include all adult and school-aged persons who are working toward a certificate of graduation.</li> </ul>
<b>Student Entitled to an Individual Education Plan</b>	<ul style="list-style-type: none"> <li>• A student for whom an Individual Education Plan (IEP) must be designed under the Individual Education Plan order, Ministerial Order 638/95.</li> </ul>

## District - Rationales for Classes with More Than 30 Students

### 037 - Delta

Source: Class size data collection (as of September 30) from standard BC public schools.

Under the *School Act* whenever a class in grades 4 to 12 exceeds 30 students, the principal and the superintendent must confirm that in their opinion, the learning conditions in that classroom are appropriate for the students. In addition, the principal must state the reasons or rationale for that class exceeding 30 students. If parents have questions regarding the information in this report, they should contact the school principal.

Ministry Code	School Name	Division/Class	No. of Students	Rationale
03737003	Delta Secondary	CALCULUS 12 001	32	S6 INSUFFICIENT NUMBERS OF STUDENTS FOR ANOTHER SECTION
03737003	Delta Secondary	CERAMICS 10 001 CERAMICS 11 001 CERAMICS 12 001	32	S2 LIMITATIONS OF TIMETABLE
03737003	Delta Secondary	CHEMISTRY 11 001	31	S8 SUBJECT IS EFFECTIVELY CONVEYED IN A GROUPING EXCEEDING 30
03737003	Delta Secondary	CRIMINOL 12 004	31	S2 LIMITATIONS OF TIMETABLE
03737003	Delta Secondary	DRAMA 8 001	31	S2 LIMITATIONS OF TIMETABLE
03737003	Delta Secondary	DRAMA 8 002	32	S2 LIMITATIONS OF TIMETABLE
03737003	Delta Secondary	ENGLISH 10 002	31	S2 LIMITATIONS OF TIMETABLE
03737003	Delta Secondary	ENGLISH 10 003	31	S2 LIMITATIONS OF TIMETABLE
03737003	Delta Secondary	ENGLISH 8 003	31	S2 LIMITATIONS OF TIMETABLE
03737003	Delta Secondary	GUITAR 8 002	31	S2 LIMITATIONS OF TIMETABLE
03737003	Delta Secondary	GUITAR 9 002 GUITAR 10 002 GUITAR 11 002 GUITAR 12 002	31	S2 LIMITATIONS OF TIMETABLE
03737003	Delta Secondary	GUITAR 9 003 GUITAR 10 003 GUITAR 11 003 GUITAR 12 003	31	S2 LIMITATIONS OF TIMETABLE
03737003	Delta Secondary	GUITAR 9 004 GUITAR 10 004 GUITAR 11 004 GUITAR 12 004	32	S2 LIMITATIONS OF TIMETABLE
03737003	Delta Secondary	GUITAR 9 006 GUITAR 10 006 GUITAR 11 006 GUITAR 12 006	33	S2 LIMITATIONS OF TIMETABLE
03737003	Delta Secondary	GUITAR 9 007 GUITAR 10 007 GUITAR 11 007 GUITAR 12 007	31	S2 LIMITATIONS OF TIMETABLE
03737003	Delta Secondary	HUMANITIES10 001	32	S7 HOMOGENEOUS GROUP OF STUDENTS
03737003	Delta Secondary	HUMANITIES10 001	32	S7 HOMOGENEOUS GROUP OF STUDENTS
03737003	Delta Secondary	HUMANITIES10 002	32	S8 SUBJECT IS EFFECTIVELY CONVEYED IN A GROUPING EXCEEDING 30
03737003	Delta Secondary	HUMANITIES10 002	32	S8 SUBJECT IS EFFECTIVELY CONVEYED IN A GROUPING EXCEEDING 30

## District - Rationales for Classes with More Than 30 Students

### 037 - Delta

Source: Class size data collection (as of September 30) from standard BC public schools.

Under the *School Act* whenever a class in grades 4 to 12 exceeds 30 students, the principal and the superintendent must confirm that in their opinion, the learning conditions in that classroom are appropriate for the students. In addition, the principal must state the reasons or rationale for that class exceeding 30 students. If parents have questions regarding the information in this report, they should contact the school principal.

Ministry Code	School Name	Division/Class	No. of Students	Rationale
03737003	Delta Secondary	INT BAND 8 002 INT BAND 9 002 INT BAND 10 002 INT BAND 11 002	35	S8 SUBJECT IS EFFECTIVELY CONV
03737003	Delta Secondary	INT GERMAN11 002	32	S6 INSUFFICIENT NUMBERS OF STUDENTS FOR ANOTHER SECTION
03737003	Delta Secondary	MA PRINC 10 002	31	S8 SUBJECT IS EFFECTIVELY CONVEYED IN A GROUPING EXCEEDING 30
03737003	Delta Secondary	MA PRINC 10 007	33	S8 SUBJECT IS EFFECTIVELY CONVEYED IN A GROUPING EXCEEDING 30
03737003	Delta Secondary	MARKETING 11 001	31	S2 LIMITATIONS OF TIMETABLE
03737003	Delta Secondary	MARKETING 11 002	32	S2 LIMITATIONS OF TIMETABLE
03737003	Delta Secondary	MATH PRINC 8 002	31	S7 HOMOGENEOUS GROUP OF STUDENTS
03737003	Delta Secondary	MATH PRINC 8 005	31	S8 SUBJECT IS EFFECTIVELY CONVEYED IN A GROUPING EXCEEDING 30
03737003	Delta Secondary	PHYS ED 10G 001	31	S8 SUBJECT IS EFFECTIVELY CONVEYED IN A GROUPING EXCEEDING 30
03737003	Delta Secondary	PHYS ED 9G 002	31	S2 LIMITATIONS OF TIMETABLE
03737003	Delta Secondary	PHYS ED 9G 003	31	S8 SUBJECT IS EFFECTIVELY CONVEYED IN A GROUPING EXCEEDING 30
03737003	Delta Secondary	PHYS ED 9G 005	32	S2 LIMITATIONS OF TIMETABLE
03737003	Delta Secondary	PLANNING 10 001	31	S2 LIMITATIONS OF TIMETABLE
03737003	Delta Secondary	PLANNING 10 003	31	S2 LIMITATIONS OF TIMETABLE
03737003	Delta Secondary	PLANNING 10 005	32	S2 LIMITATIONS OF TIMETABLE
03737003	Delta Secondary	PLANNING 10 010	31	S2 LIMITATIONS OF TIMETABLE
03737003	Delta Secondary	SCI/TECH 11 001	31	S2 LIMITATIONS OF TIMETABLE
03737003	Delta Secondary	SCIENCE 8 001	31	S1 ALTERNATIVE PLACEMENT OF STUDENTS
03737003	Delta Secondary	SEN BAND 10 001 SEN BAND 11 001 SEN BAND 12 001	35	S8 SUBJECT IS EFFECTIVELY CONV
03737003	Delta Secondary	SOCIALS 10 007	31	S2 LIMITATIONS OF TIMETABLE

## District - Rationales for Classes with More Than 30 Students

### 037 - Delta

Source: Class size data collection (as of September 30) from standard BC public schools.

Under the *School Act* whenever a class in grades 4 to 12 exceeds 30 students, the principal and the superintendent must confirm that in their opinion, the learning conditions in that classroom are appropriate for the students. In addition, the principal must state the reasons or rationale for that class exceeding 30 students. If parents have questions regarding the information in this report, they should contact the school principal.

Ministry Code	School Name	Division/Class	No. of Students	Rationale
03737003	Delta Secondary	SOCIALS 8 002	31	S2 LIMITATIONS OF TIMETABLE
03737003	Delta Secondary	SOCIALS 9 001	31	S2 LIMITATIONS OF TIMETABLE
03737010	Delta Manor Elementary	2	31	E2 LIMITATIONS OF CLASSROOM CAPACITIES
03737012	North Delta Secondary	ART 9 001 VIS ARTS 10 001 LDIEP INCL10 002	31	S2 LIMITATIONS OF TIMETABLE
03737012	North Delta Secondary	ART/DRAMA 008	31	S2 LIMITATIONS OF TIMETABLE
03737012	North Delta Secondary	BUS & APPBUS 001 CT ELECTRIC 001 HEALTH&HUMAN 001 TOUR & HOSP 001	33	S2 LIMITATIONS OF TIMETABLE
03737012	North Delta Secondary	MATH 10 005	31	S2 LIMITATIONS OF TIMETABLE
03737012	North Delta Secondary	PE 8 GIRLS 003	31	S2 LIMITATIONS OF TIMETABLE
03737012	North Delta Secondary	PE10 GIRLS 003	32	S2 LIMITATIONS OF TIMETABLE
03737012	North Delta Secondary	SCIENCE 10 001	31	S2 LIMITATIONS OF TIMETABLE
03737012	North Delta Secondary	SOCIALS 10 004	31	S2 LIMITATIONS OF TIMETABLE
03737012	North Delta Secondary	SOCIALS 11 004	31	S4 NEW STUDENTS
03737021	Delview Secondary	FRENCH 10 011	31	S2 LIMITATIONS OF TIMETABLE
03737021	Delview Secondary	FRENCH 9 011	31	S2 LIMITATIONS OF TIMETABLE
03737021	Delview Secondary	PHYS ED 8-G 011	31	S2 LIMITATIONS OF TIMETABLE
03737021	Delview Secondary	PHYS/ED 10-B 011	32	S2 LIMITATIONS OF TIMETABLE
03737021	Delview Secondary	PRIN/MATH 11 011	31	S2 LIMITATIONS OF TIMETABLE
03737021	Delview Secondary	SCIENCE 9 011	31	S2 LIMITATIONS OF TIMETABLE
03737021	Delview Secondary	SPANISH 11-B 011	31	S6 INSUFFICIENT NUMBERS OF STU
03737026	Gibson Elementary	6	31	E2 LIMITATIONS OF CLASSROOM CAPACITIES
03737034	Burnsview Secondary	ADV ART 10 001 ADV ART 11 001 ADV ART 12 001	32	S2 LIMITATIONS OF TIMETABLE
03737034	Burnsview Secondary	DSKTP PUB 11 001 DSKTP PUB 12 001	31	S2 LIMITATIONS OF TIMETABLE
03737034	Burnsview Secondary	ENGLISH 10 001	31	S2 LIMITATIONS OF TIMETABLE

## District - Rationales for Classes with More Than 30 Students

### 037 - Delta

Source: Class size data collection (as of September 30) from standard BC public schools.

Under the *School Act* whenever a class in grades 4 to 12 exceeds 30 students, the principal and the superintendent must confirm that in their opinion, the learning conditions in that classroom are appropriate for the students. In addition, the principal must state the reasons or rationale for that class exceeding 30 students. If parents have questions regarding the information in this report, they should contact the school principal.

Ministry Code	School Name	Division/Class	No. of Students	Rationale
03737034	Burnsview Secondary	ENGLISH 9 004	31	S2 LIMITATIONS OF TIMETABLE
03737034	Burnsview Secondary	FRAN LANG 12 001	32	S2 LIMITATIONS OF TIMETABLE
03737034	Burnsview Secondary	FRAN LANG 8 002	32	S2 LIMITATIONS OF TIMETABLE
03737034	Burnsview Secondary	FRENCH 8 001	31	S2 LIMITATIONS OF TIMETABLE
03737034	Burnsview Secondary	GEOGRAPHY 12 001	32	S2 LIMITATIONS OF TIMETABLE
03737034	Burnsview Secondary	LIFESKILLS8A 005	31	S2 LIMITATIONS OF TIMETABLE
03737034	Burnsview Secondary	MATH 10 PRIN 002	31	S2 LIMITATIONS OF TIMETABLE
03737034	Burnsview Secondary	MATH 11 PRIN 004	31	S2 LIMITATIONS OF TIMETABLE
03737034	Burnsview Secondary	MATH 8 001	32	S2 LIMITATIONS OF TIMETABLE
03737034	Burnsview Secondary	MATH 8 006	32	S2 LIMITATIONS OF TIMETABLE
03737034	Burnsview Secondary	MATH 9 PRIN 001	31	S2 LIMITATIONS OF TIMETABLE
03737034	Burnsview Secondary	MATH 9 PRIN 002	31	S2 LIMITATIONS OF TIMETABLE
03737034	Burnsview Secondary	PHYS ED 8B 002	31	S2 LIMITATIONS OF TIMETABLE
03737034	Burnsview Secondary	PHYS ED 8G 001	33	S2 LIMITATIONS OF TIMETABLE
03737034	Burnsview Secondary	PHYS ED 8G 002	32	S2 LIMITATIONS OF TIMETABLE
03737034	Burnsview Secondary	PHYS ED 8G 003	35	S2 LIMITATIONS OF TIMETABLE
03737034	Burnsview Secondary	PHYS ED 9B 002	32	S2 LIMITATIONS OF TIMETABLE
03737034	Burnsview Secondary	PLANNING 10 001	31	S2 LIMITATIONS OF TIMETABLE
03737034	Burnsview Secondary	PLANNING 10 003	31	S2 LIMITATIONS OF TIMETABLE
03737034	Burnsview Secondary	SCI HUM 11 001	32	S2 LIMITATIONS OF TIMETABLE
03737034	Burnsview Secondary	SCI HUM 8 002	31	S2 LIMITATIONS OF TIMETABLE
03737034	Burnsview Secondary	SOCIALS 11 003	31	S2 LIMITATIONS OF TIMETABLE
03737034	Burnsview Secondary	WOODWORK 9 001 WOODWORK 10 001	31	S2 LIMITATIONS OF TIMETABLE
03737037	South Delta Secondary	ART 8 001	32	S2 LIMITATIONS OF TIMETABLE

## District - Rationales for Classes with More Than 30 Students

### 037 - Delta

Source: Class size data collection (as of September 30) from standard BC public schools.

Under the *School Act* whenever a class in grades 4 to 12 exceeds 30 students, the principal and the superintendent must confirm that in their opinion, the learning conditions in that classroom are appropriate for the students. In addition, the principal must state the reasons or rationale for that class exceeding 30 students. If parents have questions regarding the information in this report, they should contact the school principal.

Ministry Code	School Name	Division/Class	No. of Students	Rationale
03737037	South Delta Secondary	BIOLOGY 11 003	31	S2 LIMITATIONS OF TIMETABLE
03737037	South Delta Secondary	CHEMISTRY 12 003	31	S2 LIMITATIONS OF TIMETABLE
03737037	South Delta Secondary	CHORAL MUS 9 001 CHORAL MUS10 001	36	S8 SUBJECT IS EFFECTIVELY CONVEYED IN A GROUPING EXCEEDING 30
03737037	South Delta Secondary	CNCRTCHOIR11 001 CNCRTCHOIR12 001	33	S8 SUBJECT IS EFFECTIVELY CONVEYED IN A GROUPING EXCEEDING 30
03737037	South Delta Secondary	EARTH SCI 11 002	31	S2 LIMITATIONS OF TIMETABLE
03737037	South Delta Secondary	ENGLISH 10 002	31	S2 LIMITATIONS OF TIMETABLE
03737037	South Delta Secondary	ENGLISH 10 006	32	S2 LIMITATIONS OF TIMETABLE
03737037	South Delta Secondary	ENGLISH 11 003	31	S2 LIMITATIONS OF TIMETABLE
03737037	South Delta Secondary	ENGLISH 8HUM 001	31	S2 LIMITATIONS OF TIMETABLE
03737037	South Delta Secondary	FRENCH 10 001	31	S2 LIMITATIONS OF TIMETABLE
03737037	South Delta Secondary	HISTORY 12 002	31	S2 LIMITATIONS OF TIMETABLE
03737037	South Delta Secondary	MATH12CH/CAL 001	31	S2 LIMITATIONS OF TIMETABLE
03737037	South Delta Secondary	PHYS ED 8 001	31	S2 LIMITATIONS OF TIMETABLE
03737037	South Delta Secondary	PHYS ED 8 002	31	S2 LIMITATIONS OF TIMETABLE
03737037	South Delta Secondary	PHYS ED 8 002	33	S2 LIMITATIONS OF TIMETABLE
03737037	South Delta Secondary	PHYS ED 8 003	31	S2 LIMITATIONS OF TIMETABLE
03737037	South Delta Secondary	PHYS ED 8 004	31	S2 LIMITATIONS OF TIMETABLE
03737037	South Delta Secondary	PHYS ED 9 001	31	S2 LIMITATIONS OF TIMETABLE
03737037	South Delta Secondary	PHYS ED 9 004	31	S2 LIMITATIONS OF TIMETABLE
03737037	South Delta Secondary	PLANNING 10 001	33	S2 LIMITATIONS OF TIMETABLE
03737037	South Delta Secondary	PLANNING 10 002	32	S2 LIMITATIONS OF TIMETABLE
03737037	South Delta Secondary	PLANNING 10 006	32	S2 LIMITATIONS OF TIMETABLE
03737037	South Delta Secondary	PRNC MATH 10 001	31	S2 LIMITATIONS OF TIMETABLE

## District - Rationales for Classes with More Than 30 Students

### 037 - Delta

Source: Class size data collection (as of September 30) from standard BC public schools.

Under the *School Act* whenever a class in grades 4 to 12 exceeds 30 students, the principal and the superintendent must confirm that in their opinion, the learning conditions in that classroom are appropriate for the students. In addition, the principal must state the reasons or rationale for that class exceeding 30 students. If parents have questions regarding the information in this report, they should contact the school principal.

Ministry Code	School Name	Division/Class	No. of Students	Rationale
03737037	South Delta Secondary	PRNC MATH 10 003	31	S2 LIMITATIONS OF TIMETABLE
03737037	South Delta Secondary	SCIENCE 8 003	31	S2 LIMITATIONS OF TIMETABLE
03737037	South Delta Secondary	SOCIALS 10 003	32	S2 LIMITATIONS OF TIMETABLE
03737037	South Delta Secondary	SOCIALS 10 006	31	S2 LIMITATIONS OF TIMETABLE
03737037	South Delta Secondary	SOCIALS 8HUM 001	31	S2 LIMITATIONS OF TIMETABLE
03737037	South Delta Secondary	STRTRN/CON11 001 STRTRN/CON12 001	32	S2 LIMITATIONS OF TIMETABLE
03737038	Sands Secondary	FRENCH 8 003	31	S2 LIMITATIONS OF TIMETABLE
03737038	Sands Secondary	MATH 8 CHAL 001	31	S5 REQUIREMENTS OF STUDENTS' EDUCATION PROGRAMS
03737038	Sands Secondary	MATH 9/10C 001	34	S5 REQUIREMENTS OF STUDENTS' EDUCATION PROGRAMS
03737038	Sands Secondary	PHYS ED 11 001 PHYS ED 12 001	32	S8 SUBJECT IS EFFECTIVELY CONV
03737038	Sands Secondary	PHYS ED 11 003 PHYS ED 12 003	32	S2 LIMITATIONS OF TIMETABLE
03737038	Sands Secondary	PHYS ED 11 005 PHYS ED 12 005	31	S2 LIMITATIONS OF TIMETABLE
03737038	Sands Secondary	PHYS ED 8G 001	31	S8 SUBJECT IS EFFECTIVELY CONVEYED IN A GROUPING EXCEEDING 30
03737038	Sands Secondary	PLANNING 001	32	S2 LIMITATIONS OF TIMETABLE
03737038	Sands Secondary	SOCIALS 10 004	31	S2 LIMITATIONS OF TIMETABLE
03737038	Sands Secondary	SOCIALS 11 001	32	S2 LIMITATIONS OF TIMETABLE
03737038	Sands Secondary	SOCIALS 9 002	31	S2 LIMITATIONS OF TIMETABLE
03737038	Sands Secondary	SPANISH 9 001	32	S2 LIMITATIONS OF TIMETABLE
03737040	Seaquam Secondary	ART FOUND 11 001 ART FOUND 12 002	31	S2 LIMITATIONS OF TIMETABLE
03737040	Seaquam Secondary	DRAMA 10 001 ACTING 11 001 ACTING 12 001	33	S2 LIMITATIONS OF TIMETABLE
03737040	Seaquam Secondary	DRAMA 10 002 ACTING 11 002 ACTING 12 002 TP12: D&S 12 001	33	S2 LIMITATIONS OF TIMETABLE
03737040	Seaquam Secondary	ENGLISH 10 002	31	S2 LIMITATIONS OF TIMETABLE

## District - Rationales for Classes with More Than 30 Students

### 037 - Delta

Source: Class size data collection (as of September 30) from standard BC public schools.

Under the *School Act* whenever a class in grades 4 to 12 exceeds 30 students, the principal and the superintendent must confirm that in their opinion, the learning conditions in that classroom are appropriate for the students. In addition, the principal must state the reasons or rationale for that class exceeding 30 students. If parents have questions regarding the information in this report, they should contact the school principal.

Ministry Code	School Name	Division/Class	No. of Students	Rationale
03737040	Seaquam Secondary	ENGLISH 10 003	31	S2 LIMITATIONS OF TIMETABLE
03737040	Seaquam Secondary	ENGLISH 10 006	32	S2 LIMITATIONS OF TIMETABLE
03737040	Seaquam Secondary	ENGLISH 10 008	32	S2 LIMITATIONS OF TIMETABLE
03737040	Seaquam Secondary	ENGLISH 10CH 001	35	S7 HOMOGENOUS GROUP OF STUDENTS
03737040	Seaquam Secondary	ENGLISH 11 006	31	S2 LIMITATIONS OF TIMETABLE
03737040	Seaquam Secondary	ENGLISH 11CH 001	34	S7 HOMOGENOUS GROUP OF STUDENTS
03737040	Seaquam Secondary	ENGLISH 8 102	32	S2 LIMITATIONS OF TIMETABLE
03737040	Seaquam Secondary	ENGLISH 8 104	32	S2 LIMITATIONS OF TIMETABLE
03737040	Seaquam Secondary	ENGLISH 8 105	31	S2 LIMITATIONS OF TIMETABLE
03737040	Seaquam Secondary	FILM/VID 9 002 /TUTORING 12 005	31	S2 LIMITATIONS OF TIMETABLE
03737040	Seaquam Secondary	FRENCH 12 001	31	S5 REQUIREMENTS OF STUDENTS' EDUCATION PROGRAMS
03737040	Seaquam Secondary	FRENCH 8 001	31	S2 LIMITATIONS OF TIMETABLE
03737040	Seaquam Secondary	FRENCH 8 005	32	S2 LIMITATIONS OF TIMETABLE
03737040	Seaquam Secondary	GRAPHICS 10 002 SA:PRINT&GRA 002	31	S2 LIMITATIONS OF TIMETABLE
03737040	Seaquam Secondary	HISTORY 12 003	31	S2 LIMITATIONS OF TIMETABLE
03737040	Seaquam Secondary	JAPANESE 10 001 INTRO JA 11 001	32	S7 HOMOGENOUS GROUP OF STUDENTS
03737040	Seaquam Secondary	MATH 8CH 001	32	S7 HOMOGENOUS GROUP OF STUDENTS
03737040	Seaquam Secondary	MATH 8CH 003	31	S7 HOMOGENOUS GROUP OF STUDENTS
03737040	Seaquam Secondary	PHYS ED 10B 001	31	S2 LIMITATIONS OF TIMETABLE
03737040	Seaquam Secondary	PHYS ED 8B 001 TUTORING 12 001	35	S2 LIMITATIONS OF TIMETABLE
03737040	Seaquam Secondary	PHYS ED 8B 003	31	S2 LIMITATIONS OF TIMETABLE
03737040	Seaquam Secondary	PHYS ED 8B 004 TUTORING 11 004 TUTORING 12 004	36	S2 LIMITATIONS OF TIMETABLE
03737040	Seaquam Secondary	PHYS ED 9B 002	31	S2 LIMITATIONS OF TIMETABLE

## District - Rationales for Classes with More Than 30 Students

### 037 - Delta

Source: Class size data collection (as of September 30) from standard BC public schools.

Under the *School Act* whenever a class in grades 4 to 12 exceeds 30 students, the principal and the superintendent must confirm that in their opinion, the learning conditions in that classroom are appropriate for the students. In addition, the principal must state the reasons or rationale for that class exceeding 30 students. If parents have questions regarding the information in this report, they should contact the school principal.

Ministry Code	School Name	Division/Class	No. of Students	Rationale
03737040	Seaquam Secondary	PHYS ED 9B 003	31	S2 LIMITATIONS OF TIMETABLE
03737040	Seaquam Secondary	PHYS ED 9B 004 TUTORING 11 003 TUTORING 12 003	32	S2 LIMITATIONS OF TIMETABLE
03737040	Seaquam Secondary	PHYS ED 9G 003	31	S2 LIMITATIONS OF TIMETABLE
03737040	Seaquam Secondary	PLANNING 10 002	31	S2 LIMITATIONS OF TIMETABLE
03737040	Seaquam Secondary	PLANNING 10 004	32	S2 LIMITATIONS OF TIMETABLE
03737040	Seaquam Secondary	PLANNING 10 006	32	S2 LIMITATIONS OF TIMETABLE
03737040	Seaquam Secondary	PLANNING 10 009	32	S2 LIMITATIONS OF TIMETABLE
03737040	Seaquam Secondary	PRINC MA 10 002	31	S2 LIMITATIONS OF TIMETABLE
03737040	Seaquam Secondary	PRINC MA 10C 003	31	S2 LIMITATIONS OF TIMETABLE
03737040	Seaquam Secondary	PRINC MA 9 005	31	S2 LIMITATIONS OF TIMETABLE
03737040	Seaquam Secondary	PRINC MA 9CH 003	32	S2 LIMITATIONS OF TIMETABLE
03737040	Seaquam Secondary	PSYCH 12AP 001	34	S5 REQUIREMENTS OF STUDENTS' EDUCATION PROGRAMS
03737040	Seaquam Secondary	SCIENCE 10 003	32	S2 LIMITATIONS OF TIMETABLE
03737040	Seaquam Secondary	SCIENCE 10 008	31	S2 LIMITATIONS OF TIMETABLE
03737040	Seaquam Secondary	SCIENCE 10 009	32	S2 LIMITATIONS OF TIMETABLE
03737040	Seaquam Secondary	SCIENCE 10 010	32	S2 LIMITATIONS OF TIMETABLE
03737040	Seaquam Secondary	SCIENCE 8 004	32	S2 LIMITATIONS OF TIMETABLE
03737040	Seaquam Secondary	SCIENCE 8 005	31	S2 LIMITATIONS OF TIMETABLE
03737040	Seaquam Secondary	SCIENCE 9 002	31	S2 LIMITATIONS OF TIMETABLE
03737040	Seaquam Secondary	SOC STU 10 003	31	S2 LIMITATIONS OF TIMETABLE
03737040	Seaquam Secondary	SOC STU 10 005	31	S2 LIMITATIONS OF TIMETABLE
03737040	Seaquam Secondary	SOC STU 10CH 001	31	S2 LIMITATIONS OF TIMETABLE
03737040	Seaquam Secondary	SOC STU 10CH 002	33	S2 LIMITATIONS OF TIMETABLE

## District - Rationales for Classes with More Than 30 Students

### 037 - Delta

Source: Class size data collection (as of September 30) from standard BC public schools.

Under the *School Act* whenever a class in grades 4 to 12 exceeds 30 students, the principal and the superintendent must confirm that in their opinion, the learning conditions in that classroom are appropriate for the students. In addition, the principal must state the reasons or rationale for that class exceeding 30 students. If parents have questions regarding the information in this report, they should contact the school principal.

Ministry Code	School Name	Division/Class	No. of Students	Rationale
03737040	Seaquam Secondary	SOC STU 8 102	32	S2 LIMITATIONS OF TIMETABLE
03737040	Seaquam Secondary	SOC STU 8 105	31	S2 LIMITATIONS OF TIMETABLE
03737040	Seaquam Secondary	SOC STU 9 005	31	S2 LIMITATIONS OF TIMETABLE
03737040	Seaquam Secondary	SOC STU 9CH 001	32	S2 LIMITATIONS OF TIMETABLE
03737040	Seaquam Secondary	VISUAL ART 8 001	31	S2 LIMITATIONS OF TIMETABLE
03737040	Seaquam Secondary	VISUAL ART10 001	31	S2 LIMITATIONS OF TIMETABLE