

Overview of Class Size and Composition in British Columbia Public Schools 2007/08

Provincial Overview

These class size data are current as of September 30, 2007 and have been verified by school districts.

PLEASE NOTE

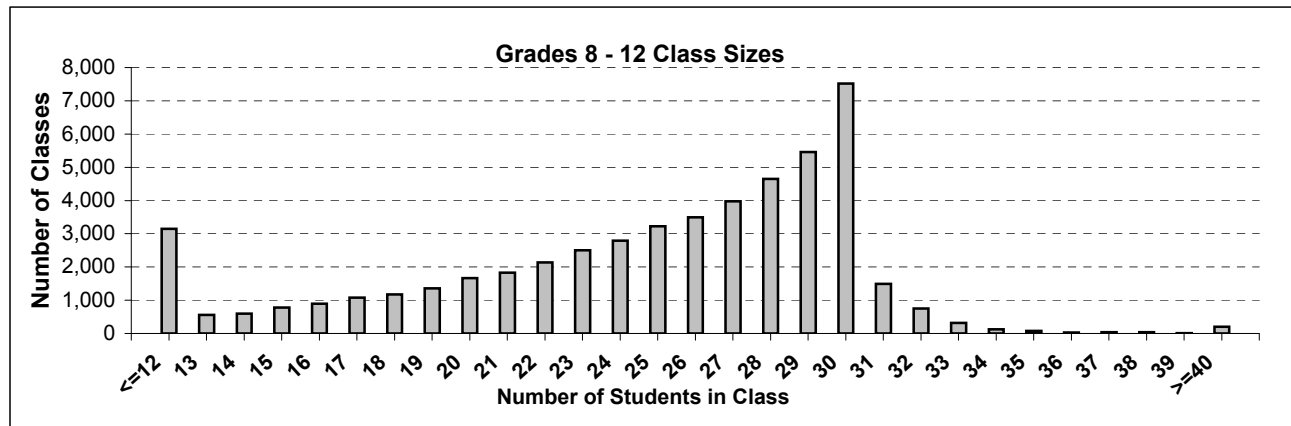
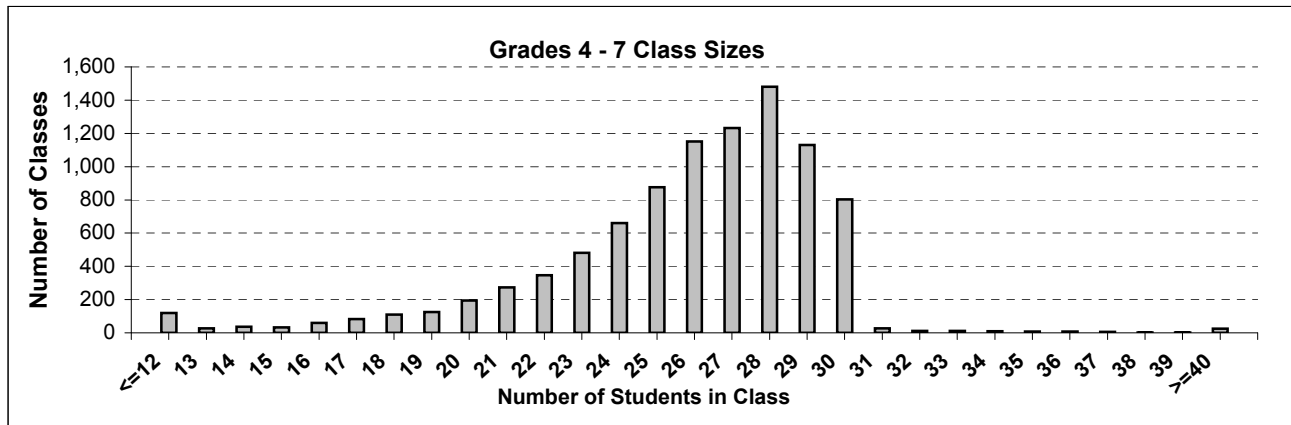
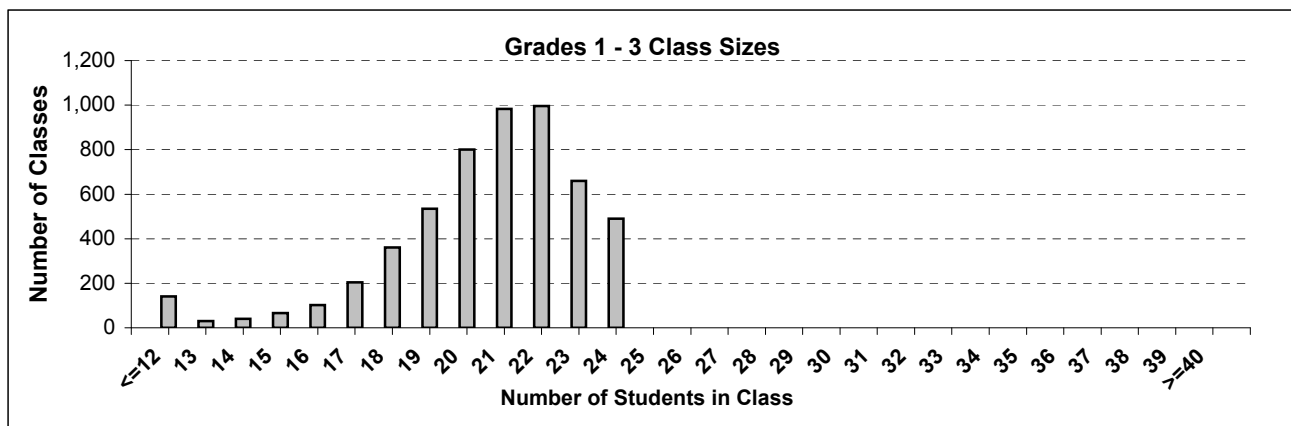
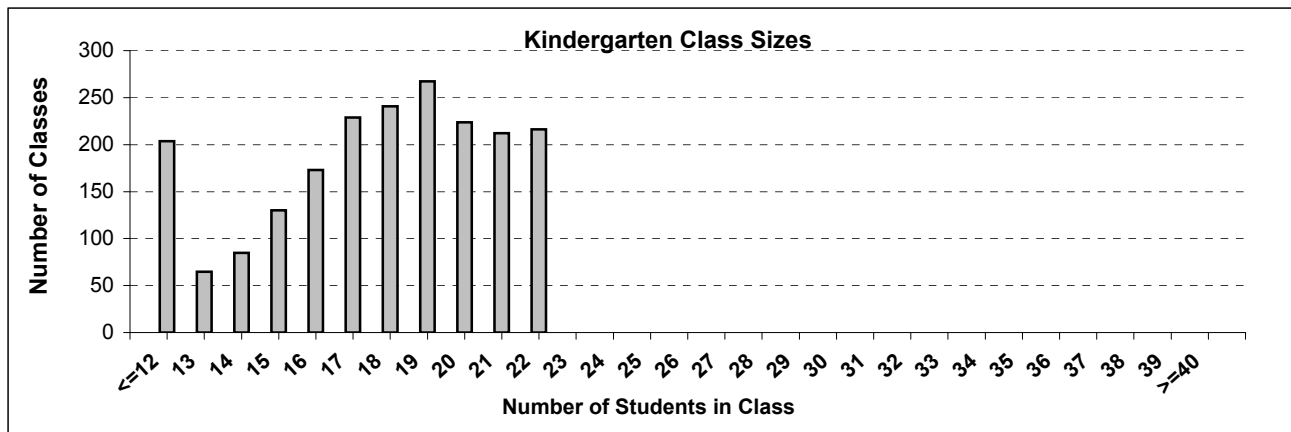
The Ministry makes small and continuous improvements to the quality of its data. Sometimes these changes result in differences from previously published reports. The data in this report are the most accurate data available at time of publication.

Ministry reports are available at <http://www.bced.gov.bc.ca/reporting/>

Contact the Analysis and Reporting Group, Information Department at educ.reportingunit@gov.bc.ca

Province - Average Class Size

Source: Class size data collection (as of September 30) from standard BC public schools.



Province - Average Class Size

Source: Class size data collection (as of September 30) from standard BC public schools.

Province - Average Class Size	Kindergarten	Grade 1 - 3	Grade 4 - 7	Grade 8 - 12
	17.4	20.4	25.8	24.4

Number of Reported Classes with Assigned Education Assistants	15,379
---	--------

Number of Reported Schools in Province	1,458
--	-------

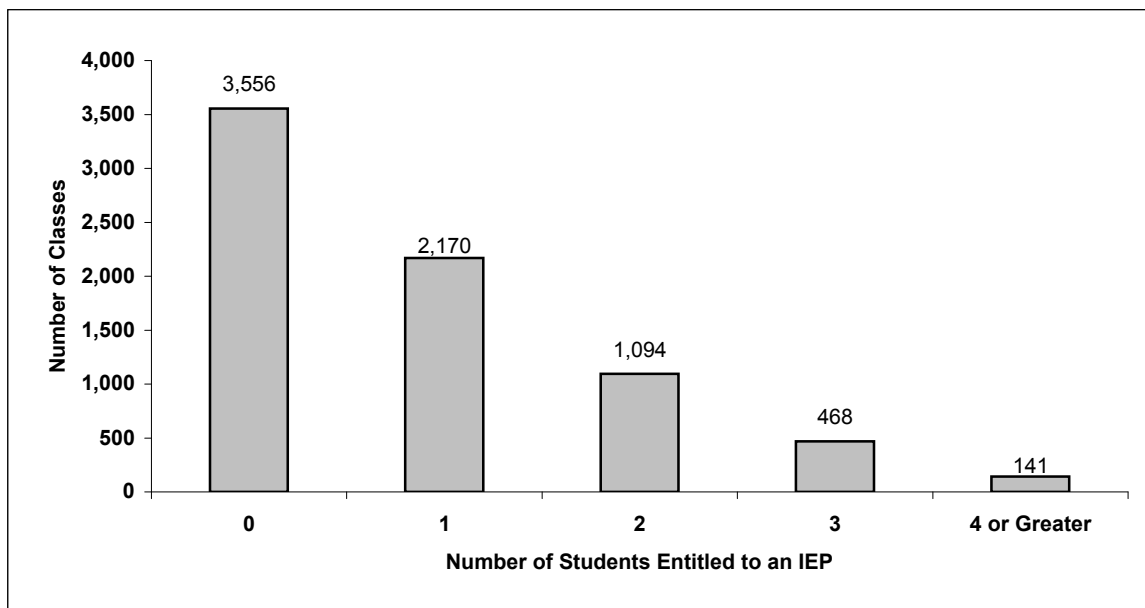
Number of Reported Classes in Province	68,693
--	--------

Number of Reported Classes in Province with more than 30 Students	3,179
---	-------

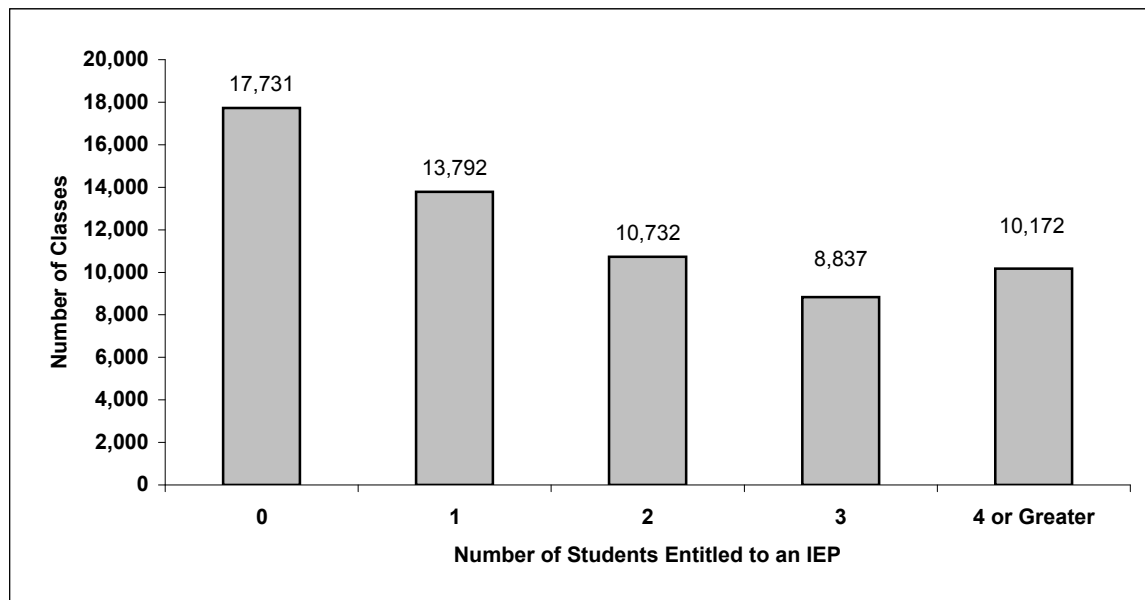
Province - Students Entitled to an Individual Education Plan (IEP)

Source: Class size data collection (as of September 30) from standard BC public schools.

Grades K-3 - Number of Classes in Province with 'X' Number of Students Entitled to an IEP



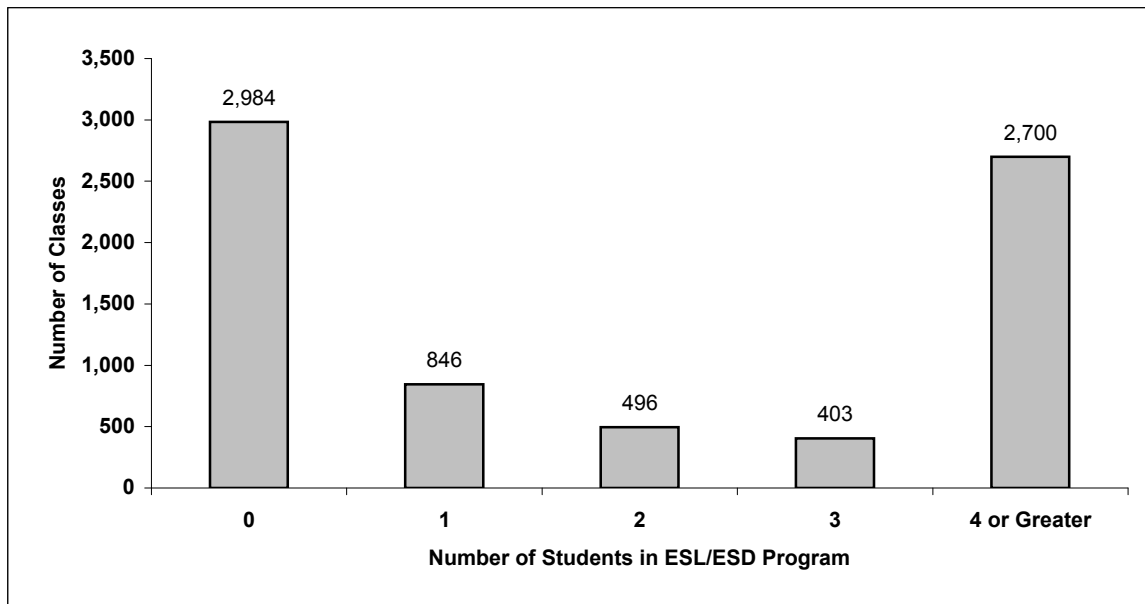
Grades 4-12 - Number of Classes in Province with 'X' Number of Students Entitled to an IEP



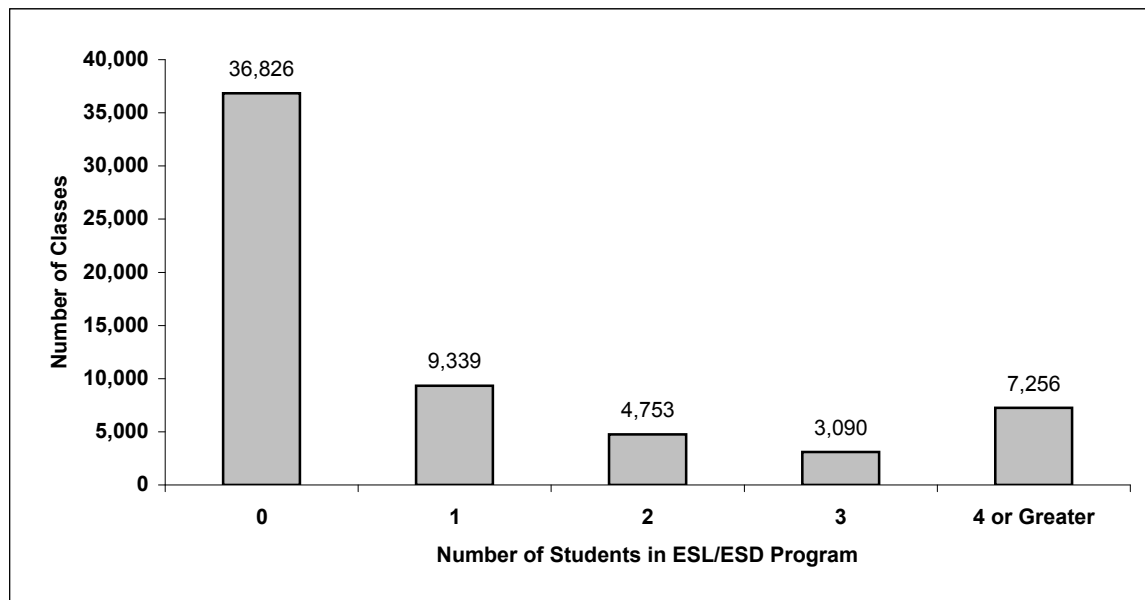
Province - Students in English as a Second Language/Dialect (ESL/ESD) Program

Source: Class size data collection (as of September 30) from standard BC public schools.

Grades K-3 - Number of Classes in Province with 'X' Number of Students in ESL/ESD Program



Grades 4-12 - Number of Classes in Province with 'X' Number of Students in ESL/ESD Program



Province: Average Class Size by School District

Source: Class size data collection (as of September 30) from standard BC public schools.

	District	Kindergarten	Grade 1 - 3	Grade 4 - 7	Grade 8 - 12
005	Southeast Kootenay	17.3	21.0	24.1	22.5
006	Rocky Mountain	14.2	19.3	24.6	22.6
008	Kootenay Lake	15.3	19.6	24.3	21.8
010	Arrow Lakes	16.9	19.9	18.2	19.9
019	Revelstoke	16.5	20.3	24.2	21.3
020	Kootenay-Columbia	16.0	21.0	26.2	24.5
022	Vernon	17.9	20.8	26.0	24.9
023	Central Okanagan	16.4	20.3	26.5	25.1
027	Cariboo-Chilcotin	15.7	19.6	22.9	22.6
028	Quesnel	17.0	20.5	24.5	23.0
033	Chilliwack	17.1	21.0	25.0	24.8
034	Abbotsford	18.7	20.8	27.4	25.9
035	Langley	17.5	21.0	26.5	23.7
036	Surrey	17.8	20.7	25.7	26.6
037	Delta	17.4	21.0	26.8	24.7
038	Richmond	18.4	19.7	26.7	25.0
039	Vancouver	18.0	20.8	27.3	24.9
040	New Westminster	17.8	20.8	26.4	25.0
041	Burnaby	18.0	20.7	27.0	25.3
042	Maple Ridge-Pitt Meadows	18.4	21.0	25.4	24.4
043	Coquitlam	18.0	21.0	27.4	25.8
044	North Vancouver	18.4	20.7	26.5	24.8
045	West Vancouver	18.3	20.8	25.5	24.6
046	Sunshine Coast	16.0	20.3	24.6	24.1
047	Powell River	17.7	20.8	27.6	23.2
048	Howe Sound	18.1	21.0	26.2	23.9
049	Central Coast	16.1	18.6	16.5	11.2
050	Haida Gwaii/Queen Charlotte	12.0	17.0	19.8	16.0
051	Boundary	12.5	18.0	23.1	19.9
052	Prince Rupert	17.0	17.7	21.6	23.2
053	Okanagan Similkameen	12.7	19.7	27.8	21.6
054	Bulkley Valley	15.4	20.0	24.0	22.6
057	Prince George	17.2	19.9	26.5	24.3
058	Nicola-Similkameen	16.8	19.2	21.2	21.6
059	Peace River South	18.7	19.3	24.6	25.0
060	Peace River North	17.2	20.1	24.5	22.2
061	Greater Victoria	18.7	20.8	26.8	24.9
062	Sooke	17.9	20.8	27.1	23.6
063	Saanich	17.8	20.3	26.4	26.1
064	Gulf Islands	15.0	19.8	24.4	24.6
067	Okanagan Skaha	17.5	20.7	24.3	24.6
068	Nanaimo-Ladysmith	17.8	20.6	25.8	25.7
069	Qualicum	13.8	19.9	25.0	25.2
070	Alberni	18.6	14.2	23.8	20.9
071	Comox Valley	17.6	20.9	25.4	25.7
072	Campbell River	16.9	20.1	25.0	24.5
073	Kamloops/Thompson	16.0	20.5	25.5	24.2
074	Gold Trail	16.6	18.7	19.1	17.6
075	Mission	16.1	20.9	25.2	24.5
078	Fraser-Cascade	15.0	20.5	22.0	20.9
079	Cowichan Valley	17.8	20.9	27.0	25.7
081	Fort Nelson	15.2	20.7	21.3	19.9
082	Coast Mountains	16.9	20.3	25.3	24.6
083	North Okanagan-Shuswap	16.8	20.7	26.2	24.7
084	Vancouver Island West	13.6	17.1	13.4	13.3
085	Vancouver Island North	19.0	18.9	21.5	21.3
087	Stikine	11.1	13.8	16.6	11.0
091	Nechako Lakes	14.9	20.7	23.7	19.3
092	Nisga'a	12.8	11.5	12.2	11.6
093	Conseil scolaire francophone	17.3	18.4	19.7	12.1
	Provincial Average	17.4	20.4	25.8	24.4

Glossary

Term		Definition / Notes
English as a Second Language/Dialect (ESL/ESD) Program	•	A program offered to students whose primary language(s) is/are other than English, and who may require additional services.
Gifted Student	•	A student who has exceptional gifts or talents and is defined as Category P in the Special Education Performance Reporting Groups.
Grade	•	The assigned grade of a student on September 30.
KH	•	Kindergarten half-time
KF	•	Kindergarten full-time
Number of Students	•	Student population is calculated by headcount.
Student	•	A person enrolled in a BC school. Student populations are calculated by headcount. Students include all adult and school-aged persons who are working toward a certificate of graduation.
Student Entitled to an Individual Education Plan	•	A student for whom an Individual Education Plan (IEP) must be designed under the Individual Education Plan order, Ministerial Order 638/95.