



Use the following technical settings to prepare Internet Explorer for electronic assessment delivery.

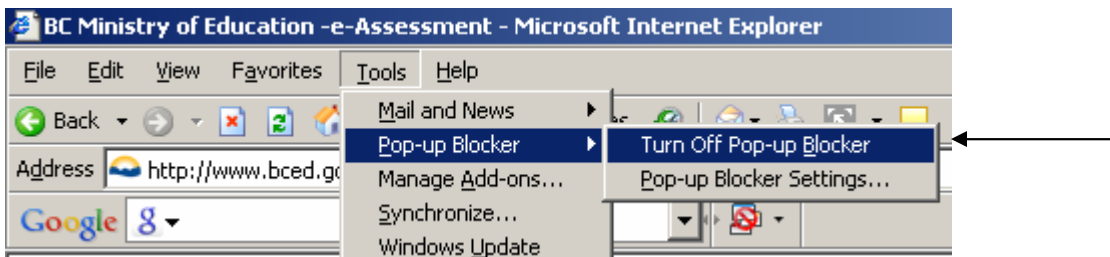
### Step 1: Turn off Pop-up Blockers

Pop-up blockers must be turned **OFF**.

There are 4 possible locations that pop-up blockers settings can be changed in Internet Explorer.

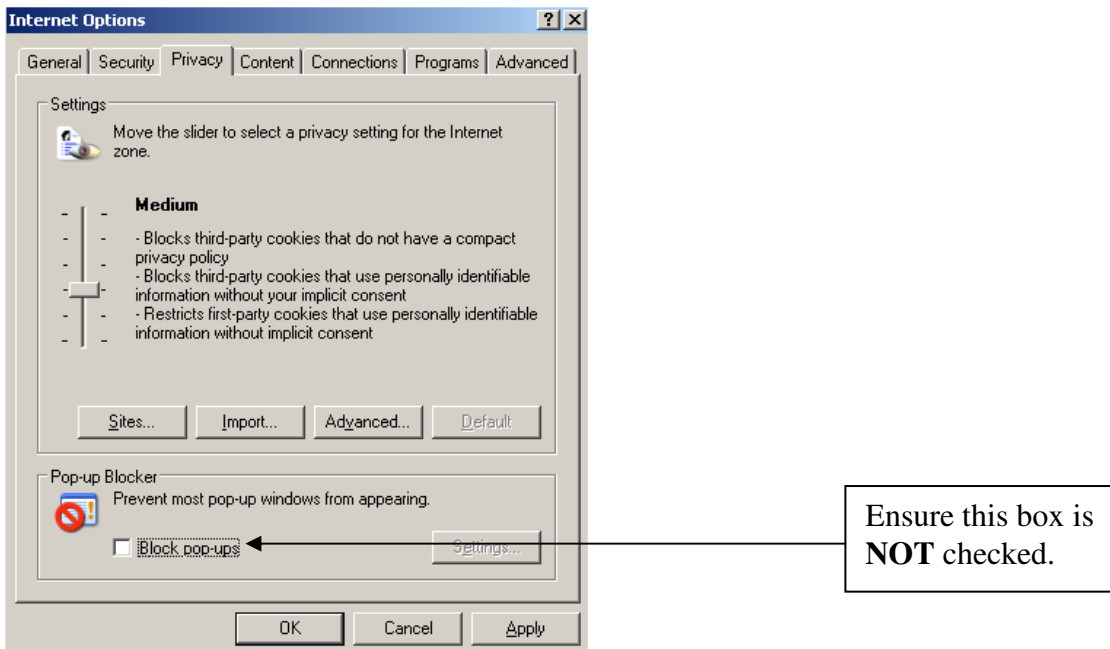
#### A. Tools → Pop-up Blocker

Pop-up blocker must be turned **OFF** in this menu setting:



#### B. Tools → Internet Options → Privacy Tab

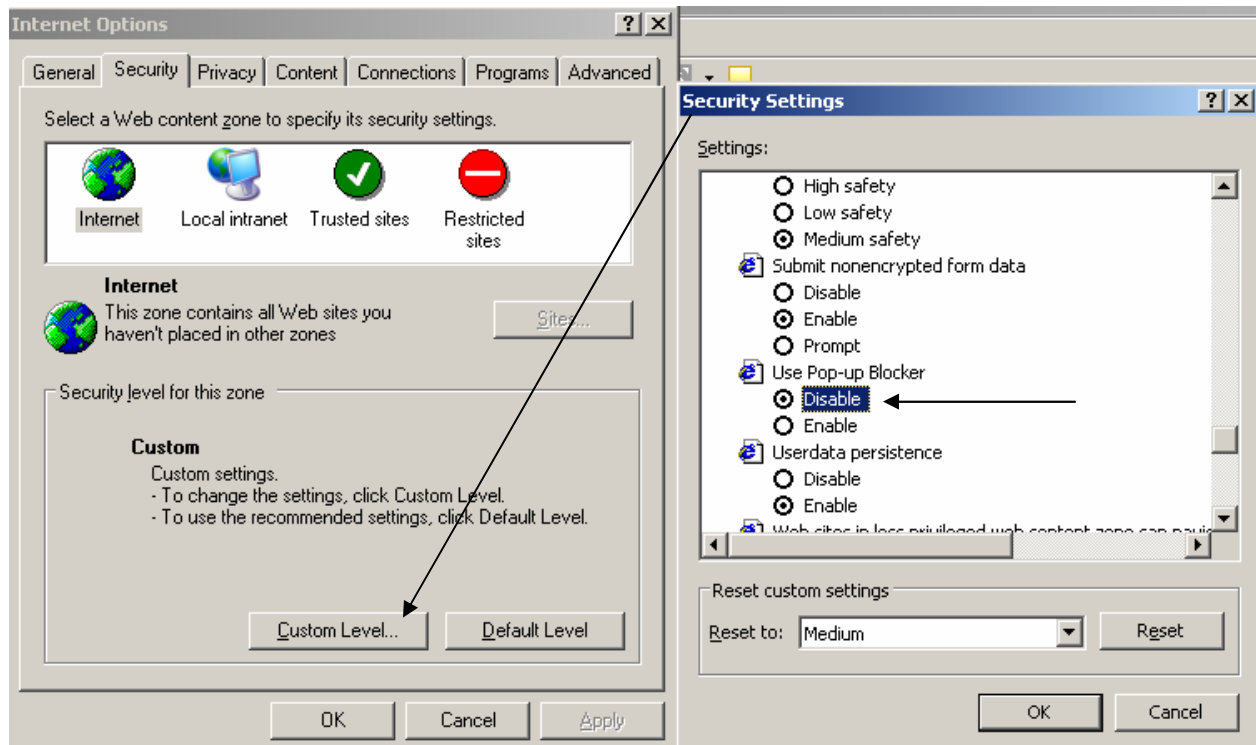
Ensure the 'Block pop-ups' field is **NOT** selected





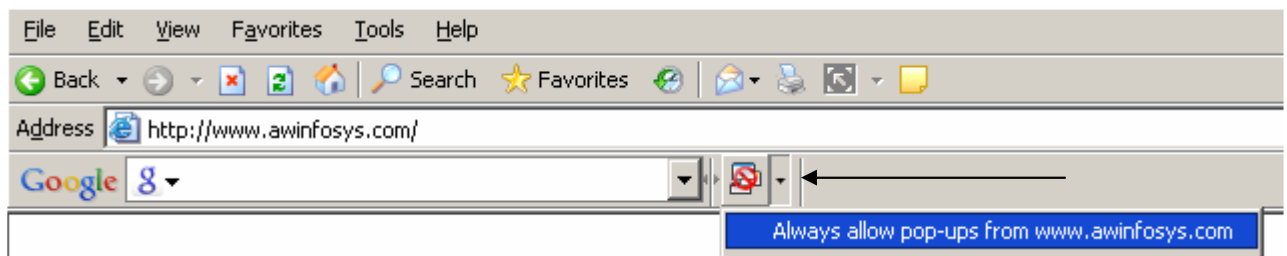
### C. Tools → Internet Options → Security Tab

Ensure that 'Use Pop-up Blocker' is **Disabled**. Click 'Custom Level' and select the 'Disable' option.



### D. Google or Yahoo menu bars

If you have a Google, Yahoo, or any other add-on menu bars that contain Pop-up Blockers, ensure they are **disabled** (i.e. they **ALLOW** pop-ups).



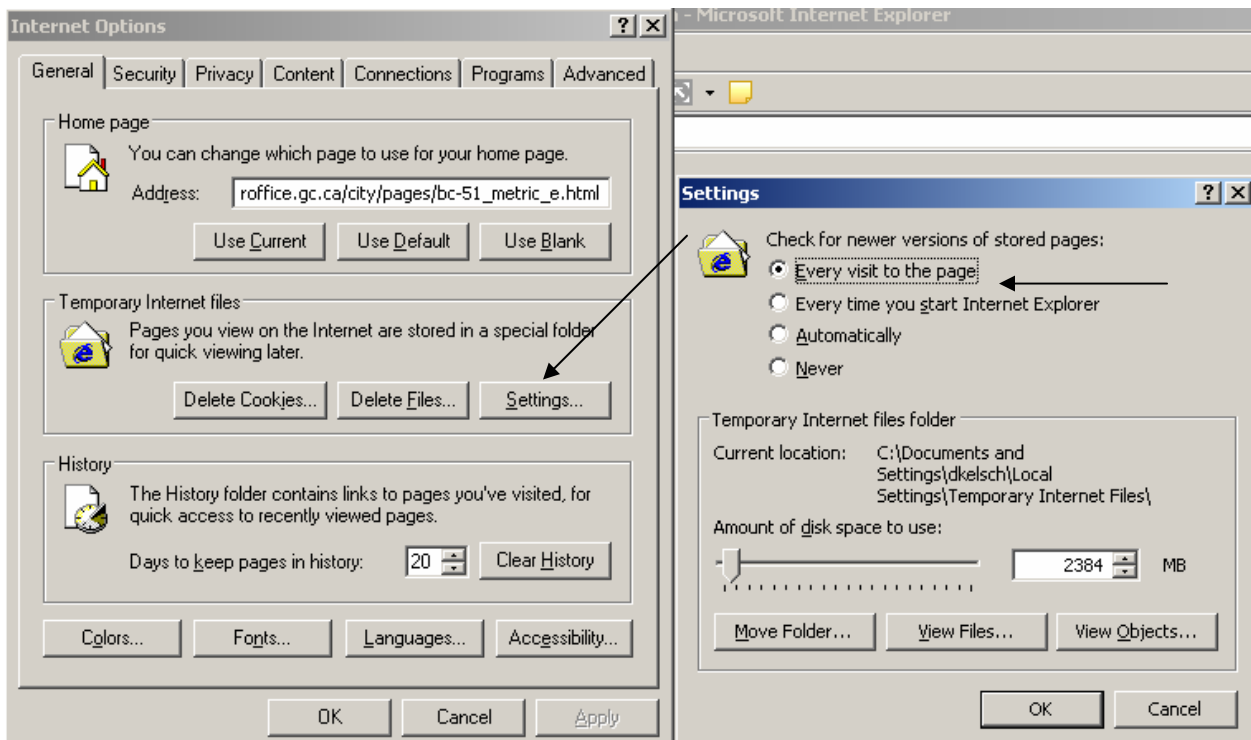


### Step 2: Set Temporary Internet File Handling

Tools → Internet Options → General Tab

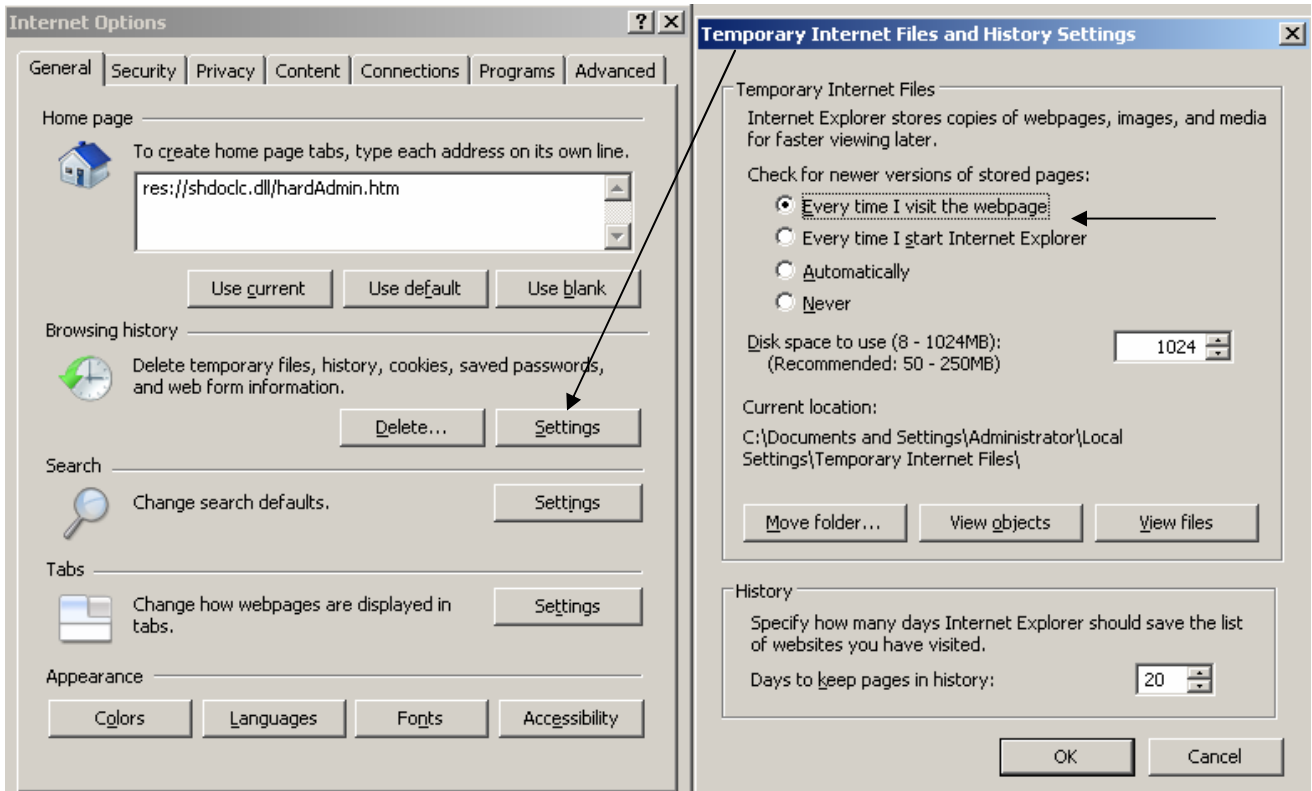
Browser must be set to check for newer versions of stored page **EVERY** visit.

For Internet Explorer 6





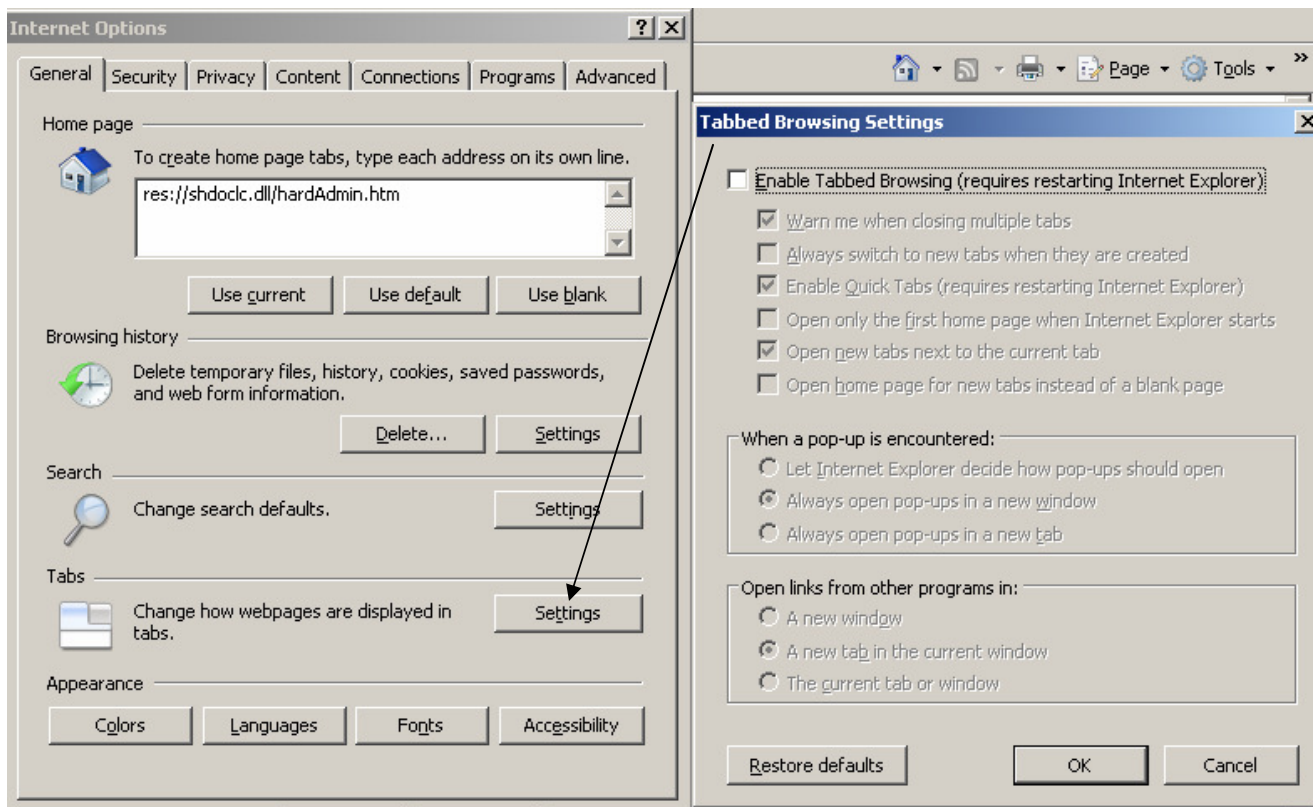
### For Internet Explorer 7 & 8





**Step 3: Turn Off Tabbed Browsing (Internet Explorer 7& 8 ONLY):**

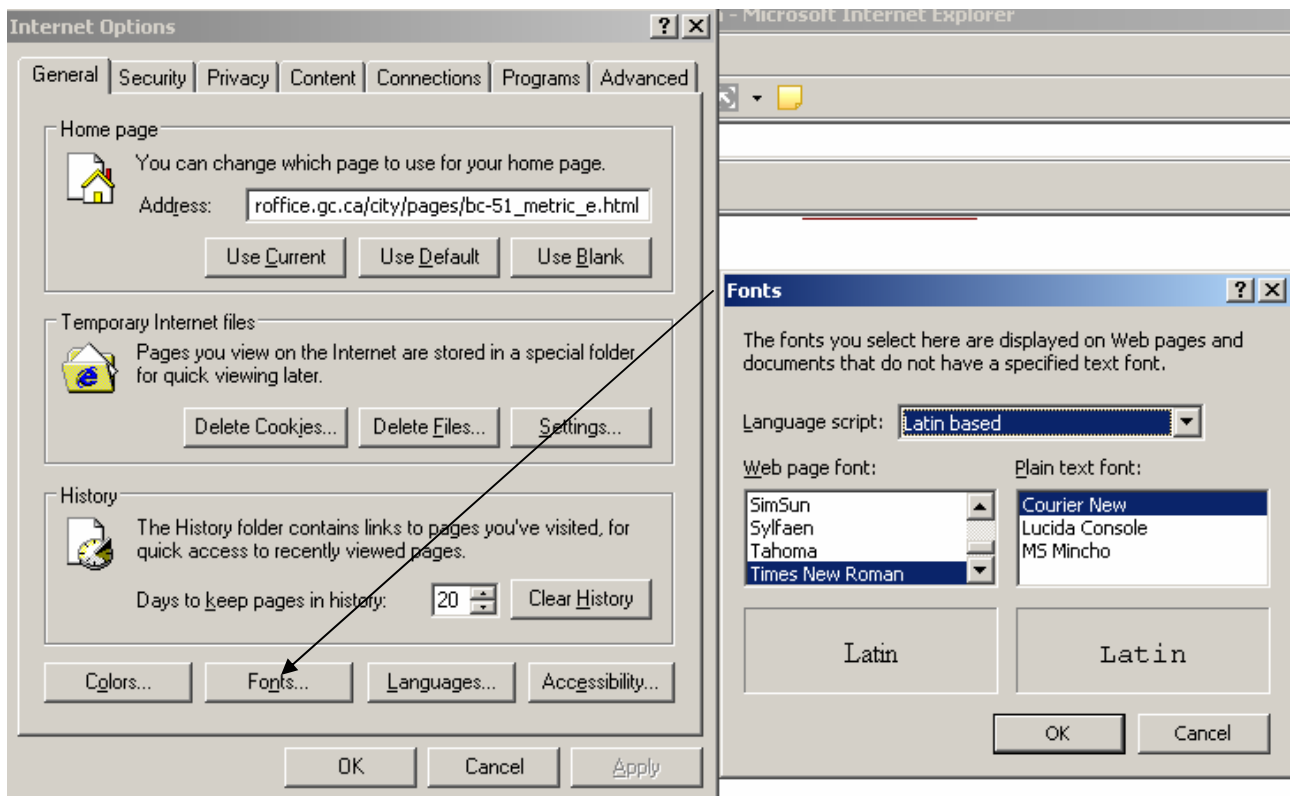
Tools → Internet Options → General Tab





### Step 4: Set Fonts

Tools → Internet Options → General Tab



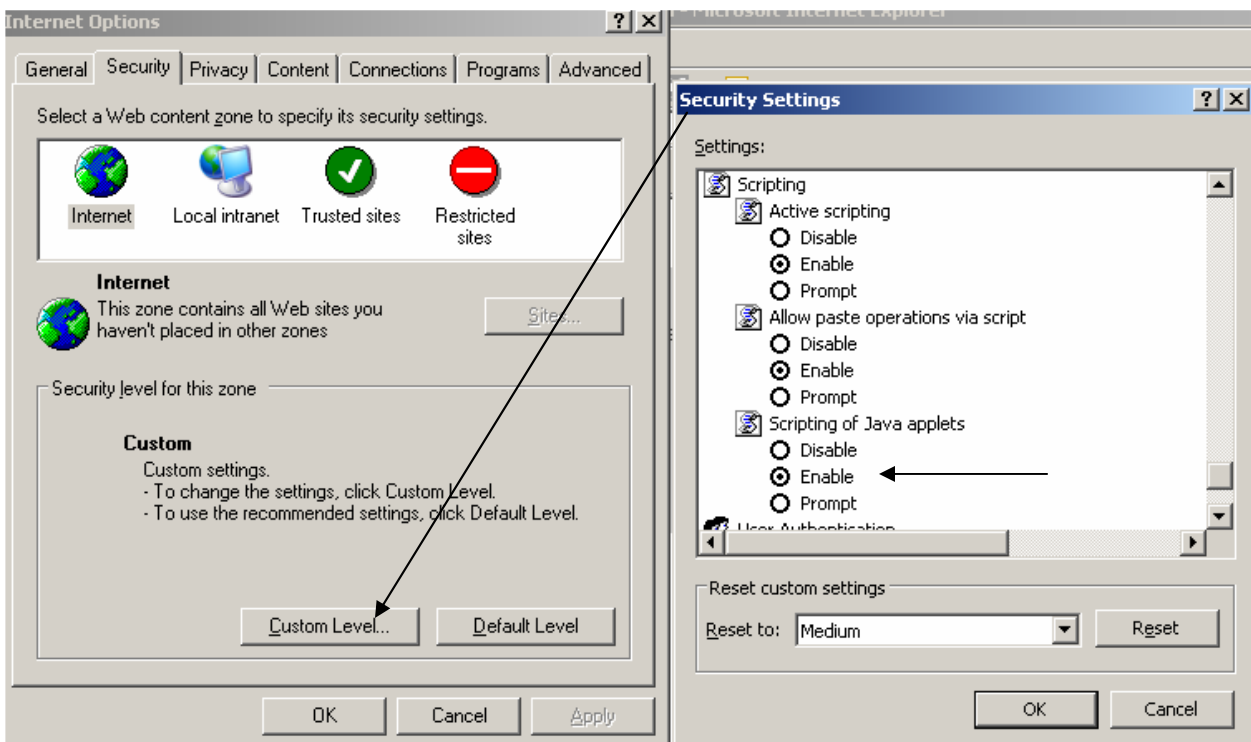
The screenshot shows the 'Internet Options' dialog box with the 'General' tab selected. The 'Home page' section has the address 'roffice.gc.ca/city/pages/bc-51\_metric\_e.html'. The 'Temporary Internet files' section has 'Delete Files...' selected. The 'History' section has 'Days to keep pages in history' set to 20. The 'Fonts...' button is highlighted with a black arrow. To the right, the 'Fonts' dialog box is open, showing 'Language script' set to 'Latin based'. The 'Web page font' list includes SimSun, Sylfaen, Tahoma, and Times New Roman. The 'Plain text font' list includes Courier New, Lucida Console, and MS Mincho. The 'Latin' font preview is shown in two boxes. The 'OK' and 'Cancel' buttons are at the bottom.



### Step 5: Enable JAVA Scripting

Tools → Internet Options → Security Tab

Java scripting must be **ENABLED**:

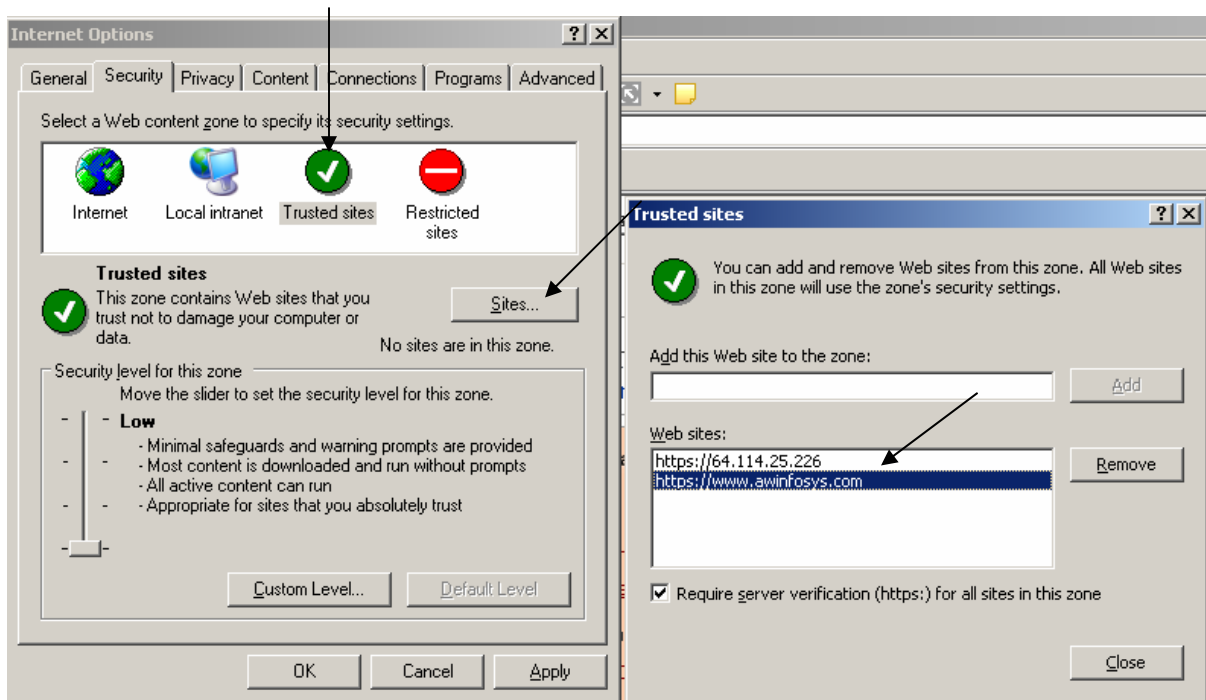




### Step 6: Add Trusted Sites

Tools → Internet Options → Security Tab

In order for the e-exam workstations to properly connect to the exam server, it must recognize it as a **Trusted Site**. Ensure that the two URL's indicated below are added to the Trusted Site listing.



<https://64.114.25.226>

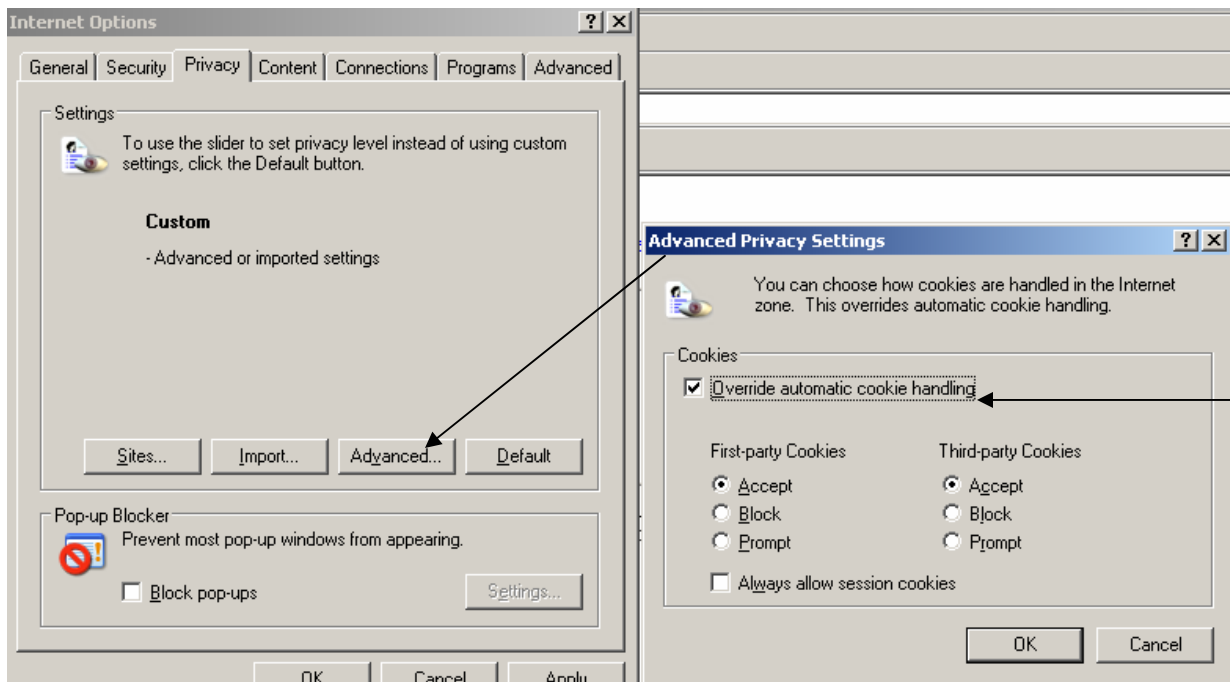
<https://www.awinfosys.com>



### Step 7: Allow Cookies

Tools → Internet Options → Privacy Tab

The workstation must be set to **ALLOW** Cookies as indicated below:

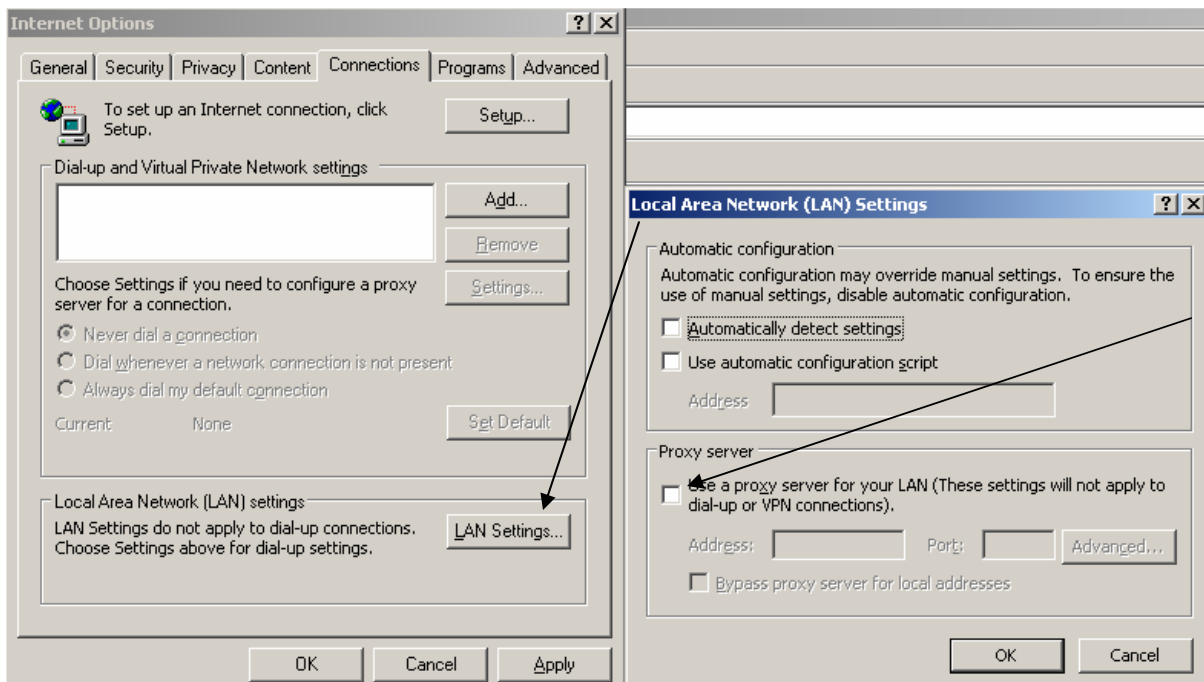




### Step 8: Disable Proxy Caching

Tools → Internet Options → Connections Tab

Proxy server function must be **DISABLED**.

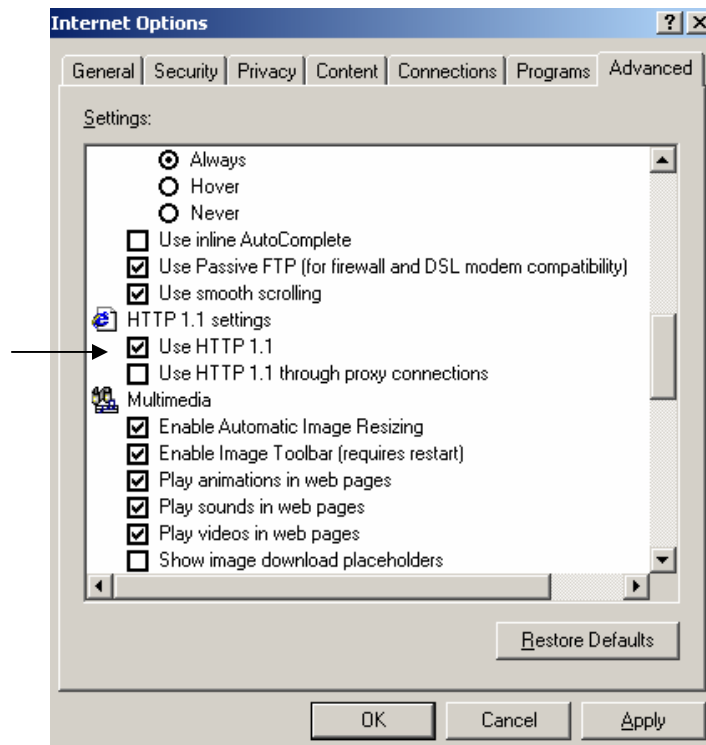




### Step 9 Enable HTTPS 1.1

Tools → Internet Options → Advanced Tab

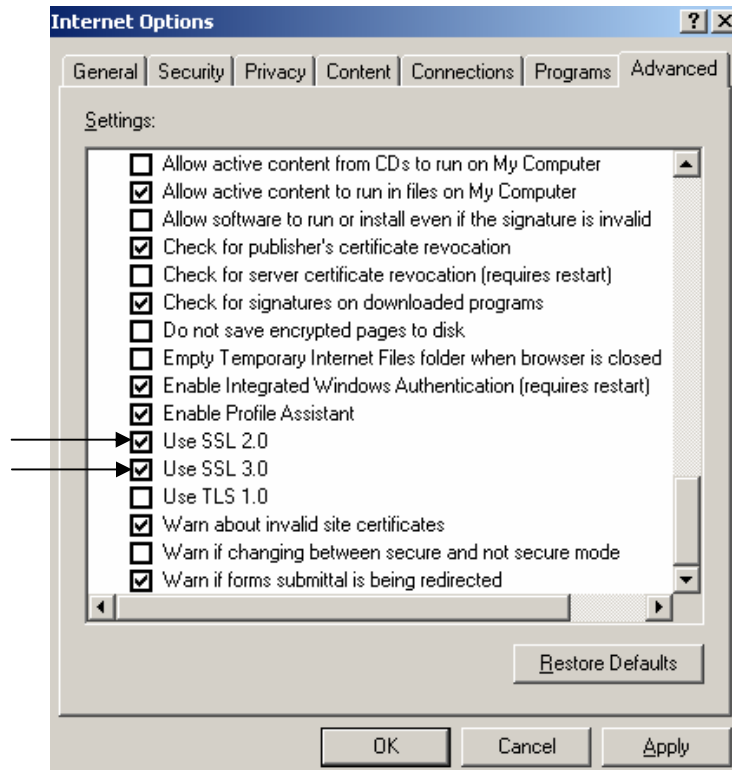
HTTP 1.1 must be **ENABLED**:





### Step 10 Enable SSL 2.0 and 3.0

Tools → Internet Options → Advanced Tab

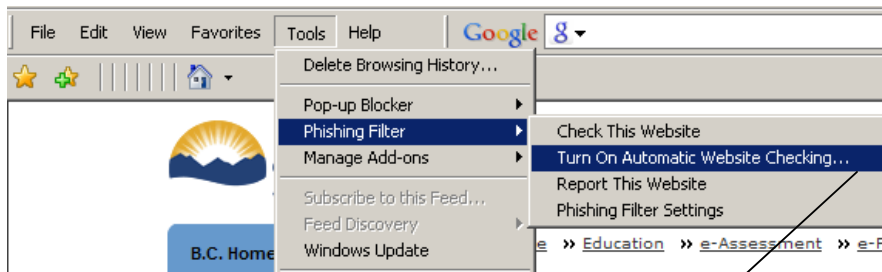




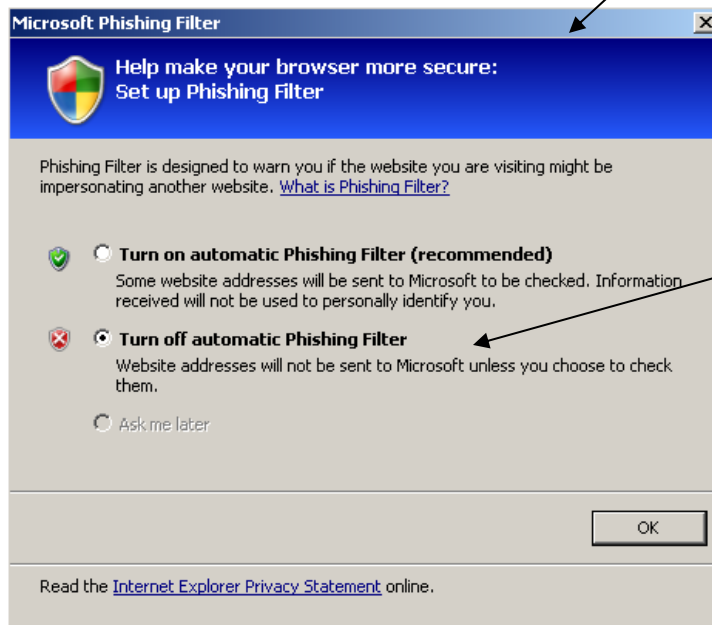
### Step 11 Disable Phishing Filter (IE 7 only) or SmartScreen Filter (IE 8 only)

Tools → Phishing Filter → Turn Off Automatic Website Checking

Phishing Filter function must be **DISABLED**. (two locations)



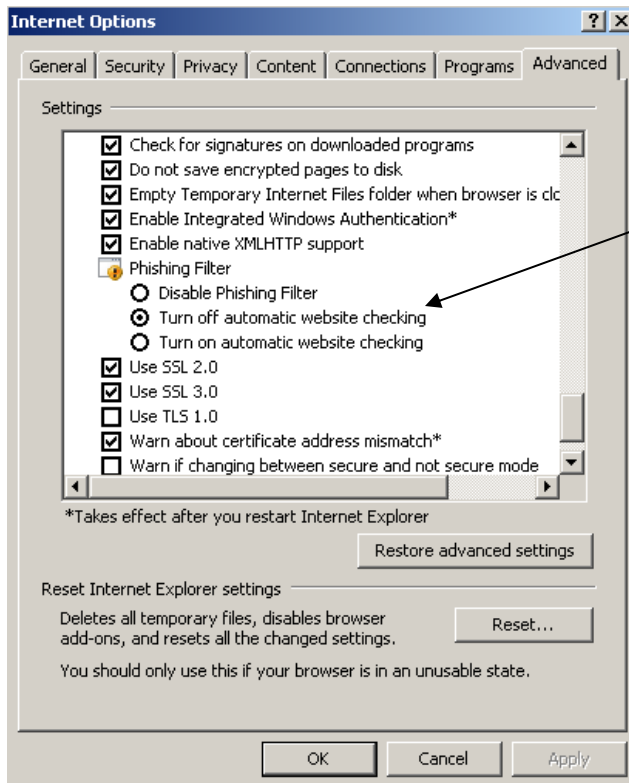
Turn OFF automatic Phishing Filter



....continued on next page....



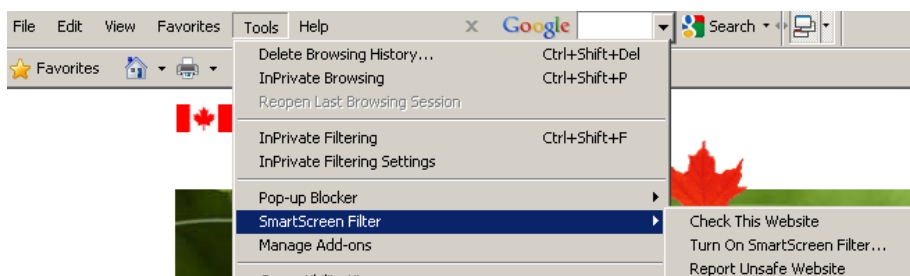
### Tools → Internet Options → Advanced



### Disable SmartScreen Filter (IE 8 only)

### Tools → SmartScreen Filter → Turn Off SmartScreen Filter

SmartScreen Filter function must be **DISABLED**. (two locations)

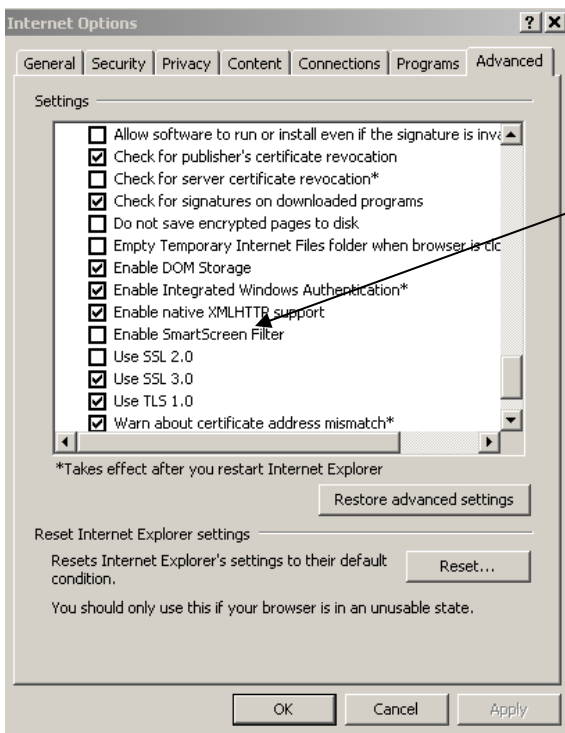




### Turn OFF automatic SmartScreen Filter



### Tools → Internet Options → Advanced



### Technical Support