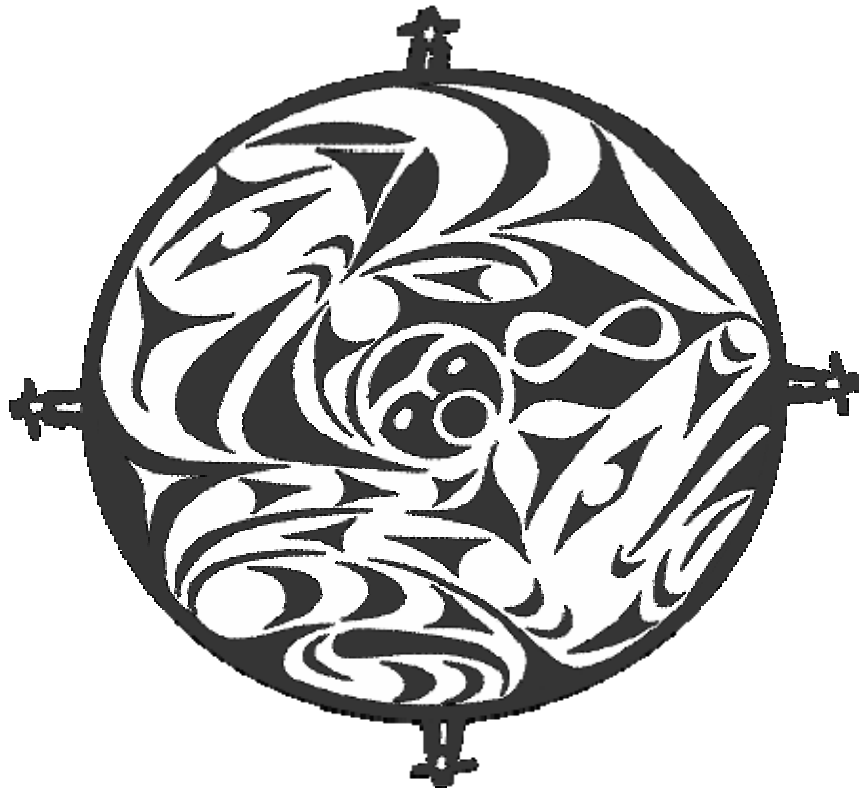


**Aboriginal Report -
How Are We Doing?
2004/05**

Province - Public Schools Only



Aboriginal Report - How Are We Doing?

Introduction

The 2004/05 Aboriginal “How Are We Doing?” report provides information about the public school system’s performance in serving students of Aboriginal ancestry. This report is one component of the ongoing effort to ensure that the needs of Aboriginal students are met and that there is continued improvement in Aboriginal student achievement.

A key goal of the Ministry of Education is improved academic achievement for all students. The education system has made significant progress towards this goal, and Aboriginal students are experiencing greater success as a result.

The report is intended to provide a basis for examining areas that require attention and focus, as well as identifying successes.

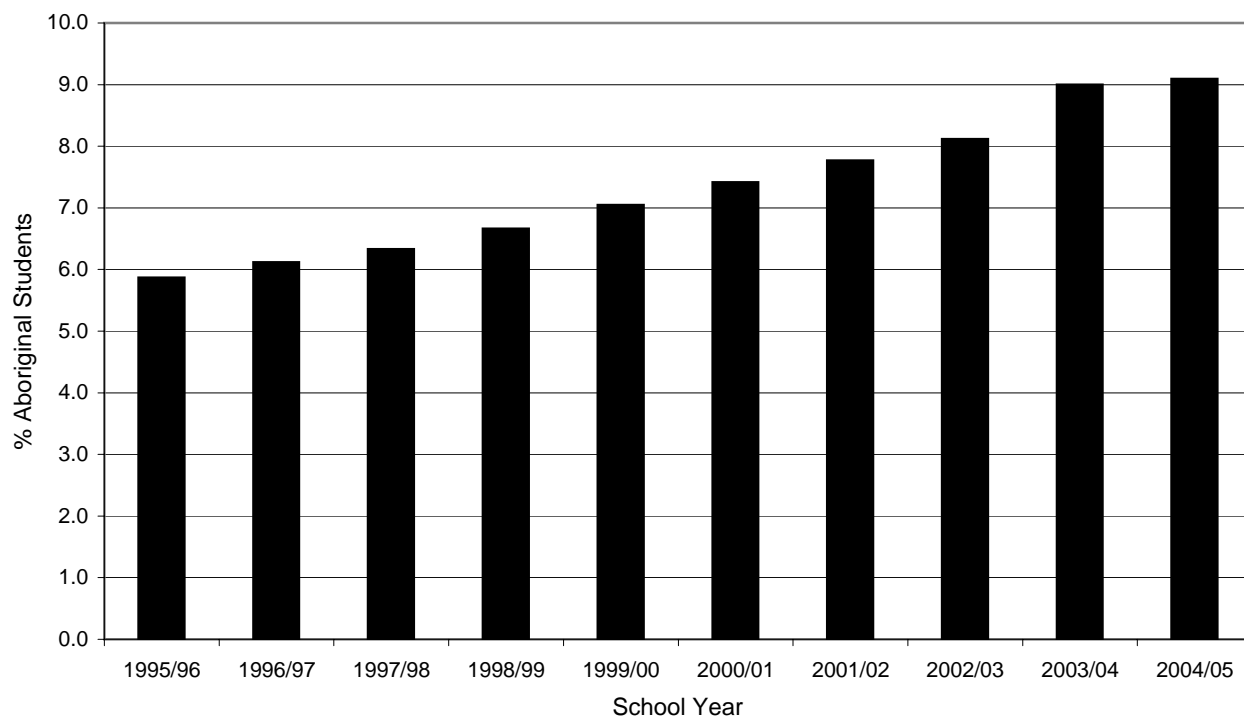
The Ministry makes small and continuous improvements to the quality of its data. Sometimes these changes result in small differences from previously published reports. The data contained in this report are the most accurate data available at time of publication.

Aboriginal Report - How Are We Doing?

Table of Contents

- 1 - Percent of Students in BC Public Schools Who Self-Identify as Aboriginal, 1995/96 - 2004/05
- 2 - Number of Aboriginal Students in BC Public Schools, by Gender, 2000/01 - 2004/05
- 3 - Number of Aboriginal Students in BC Public Schools, On or Off Reserve, 2000/01 - 2004/05
- 4 - Distribution of Aboriginal Students in BC Public Schools by Region, 2000/01 - 2004/05
- 5 - Number of BC Public Schools by Population of Aboriginal Enrolment, 2000/01 - 2004/05
- 6 - Percentage of Students in Special Education Groups, 2000/01 - 2004/05
- 7 - Percentage of Students in Special Education Behaviour Disabilities Group, by Grade Grouping, 2000/01 - 2004/05
- 8 - Percentage of Students in Special Education Behaviour Disabilities Group, 2000/01 - 2004/05
- 9 - Percentage of Students in Intensive Behaviour Interventions / Serious Mental Illness Special Education Category, 2000/01 - 2004/05
- 10 - Percentage of Students in Intensive Behaviour Interventions / Serious Mental Illness Special Education Category, 2000/01 - 2004/05
- 11 - Secondary School Progress of Students Entering Grade 8 in 1997
- 12 - Secondary School Progress of Students Entering Grade 8 in 1997, by Gender
- 13 - Reading Comprehension - Grade 4 Students - Foundation Skills Assessment, 2000/01 - 2004/05
- 14 - Writing - Grade 4 Students - Foundation Skills Assessment, 2000/01 - 2004/05
- 15 - Numeracy - Grade 4 Students - Foundation Skills Assessment, 2000/01 - 2004/05
- 16 - Reading Comprehension - Grade 7 Students - Foundation Skills Assessment, 2000/01 - 2004/05
- 17 - Writing - Grade 7 Students - Foundation Skills Assessment, 2000/01 - 2004/05
- 18 - Numeracy - Grade 7 Students - Foundation Skills Assessment, 2000/01 - 2004/05
- 19 - English 12 Participation and Success Rate, 1994/95 - 2003/04
- 20 - Communications 12 Participation and Success Rate, 1994/95 - 2003/04
- 21 - Math 12 Participation and Success Rate, 1994/95 - 2003/04
- 22 - Biology 12 Participation and Success Rate, 1994/95 - 2003/04
- 23 - Chemistry 12 Participation and Success Rate, 1994/95 - 2003/04
- 24 - Physics 12 Participation and Success Rate, 1994/95 - 2003/04
- 25 - Number of Aboriginal Graduates Receiving a Dogwood, 1994/95 - 2003/04
- 26 - Six-Year Dogwood Completion Rate, 1999/00 - 2003/04
- 27 - Six-Year Dogwood Completion Rate, 1999/00 - 2003/04

***Percent of Students in BC Public Schools Who Self-Identify as Aboriginal,
1995/96 - 2004/05 Province - Public Schools Only***



School Year	Aboriginal Students	All Students	% Aboriginal
1995/96	35755	609252	5.9
1996/97	38084	622699	6.1
1997/98	40434	638936	6.3
1998/99	42368	636071	6.7
1999/00	44748	635095	7.0
2000/01	46846	632047	7.4
2001/02	48905	629617	7.8
2002/03	50360	620667	8.1
2003/04	55305	614640	9.0
2004/05	55126	606399	9.1

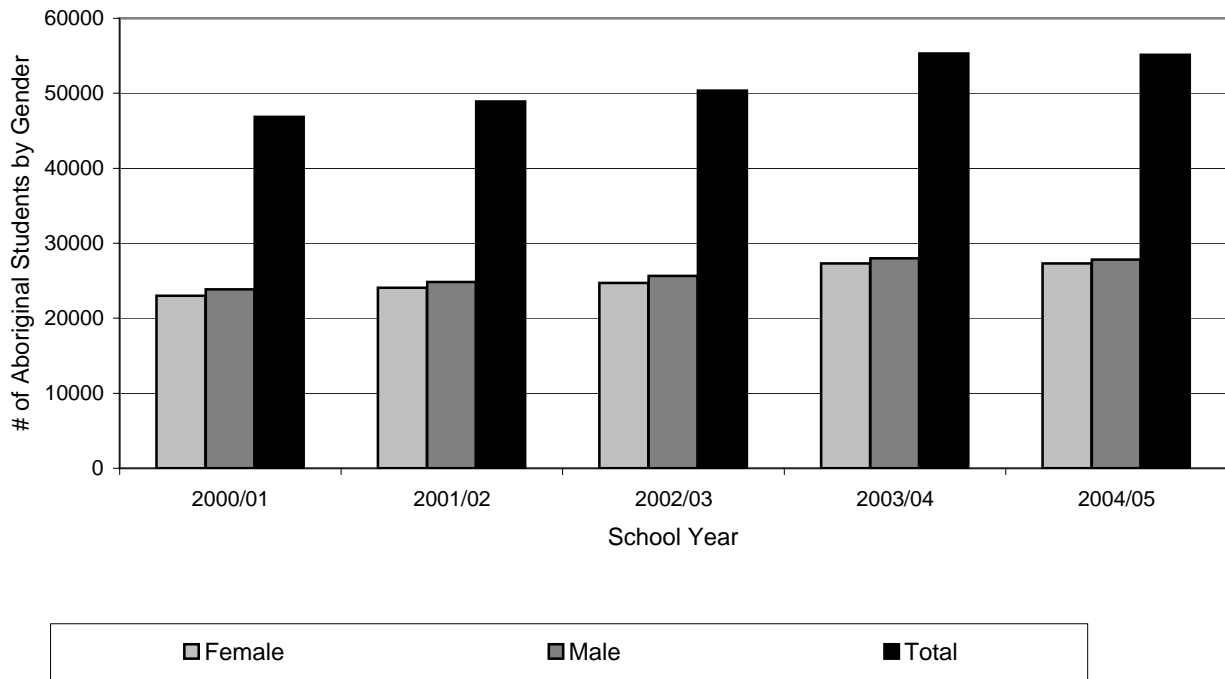
Notes:

- (1) Includes only Aboriginal students who have self-identified as being of Aboriginal ancestry (First Nations: status and non-status, Metis, and Inuit) on September 30th.
- (2) "Msk" indicates that the number cannot be displayed as it is based on fewer than five students (in accordance with the Freedom of Information and Protection of Privacy Legislation).

Provincial Overview Comments:

- (1) Self-identified Aboriginal students are a growing percentage of all students.
- (2) The increase may be the result of an increase in the number of self-identifications and/or an increase in the population.
- (3) Currently, Aboriginal students make up approximately 9.1% of the total student population.

**Number of Aboriginal Students in BC Public Schools, by Gender
2000/01 - 2004/05 Province - Public Schools Only**



School Year	Aboriginal Students					
	# of Aboriginal Students			% of Total Students		
	Female	Male	Total	Female	Male	Total
2000/01	22987	23859	46846	7.5	7.4	7.4
2001/02	24079	24826	48905	7.8	7.7	7.8
2002/03	24697	25663	50360	8.2	8.1	8.1
2003/04	27325	27980	55305	9.1	8.9	9.0
2004/05	27291	27835	55126	9.2	9.0	9.1

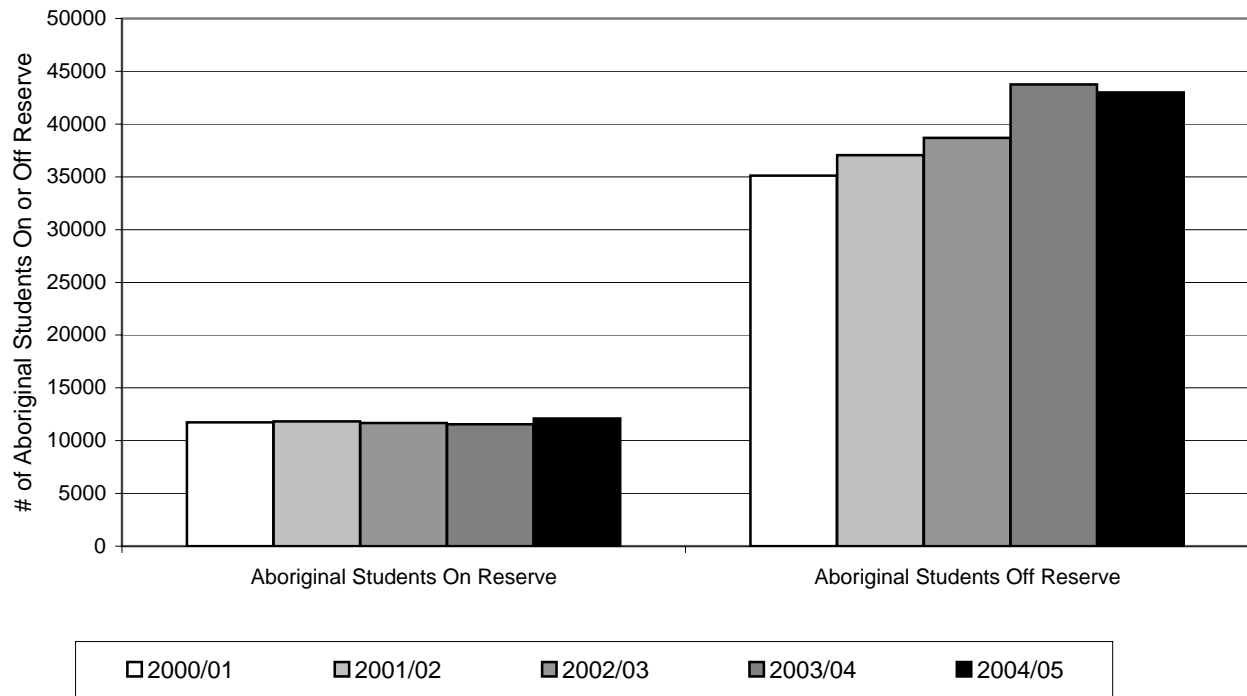
Notes:

- (1) Includes only Aboriginal students who have self-identified as being of Aboriginal ancestry (First Nations: status and non-status, Metis, and Inuit) on September 30th.
- (2) "Msk" indicates that the number cannot be displayed as it is based on fewer than five students (in accordance with the Freedom of Information and Protection of Privacy Legislation).

Provincial Overview Comments:

- (1) The ratio of female to male Aboriginal students has remained stable over the last five years.

**Number of Aboriginal Students in BC Public Schools, On or Off Reserve
2000/01 - 2004/05 Province - Public Schools Only**



School Year	Aboriginal Students					
	Aboriginal Students On Reserve			Aboriginal Students Off Reserve		
	Female	Male	Total	Female	Male	Total
2000/01	5693	6048	11741	17292	17809	35101
2001/02	5746	6094	11840	18332	18729	37061
2002/03	5657	6018	11675	19035	19642	38677
2003/04	5643	5911	11554	21677	22066	43743
2004/05	5946	6162	12108	21341	21669	43010

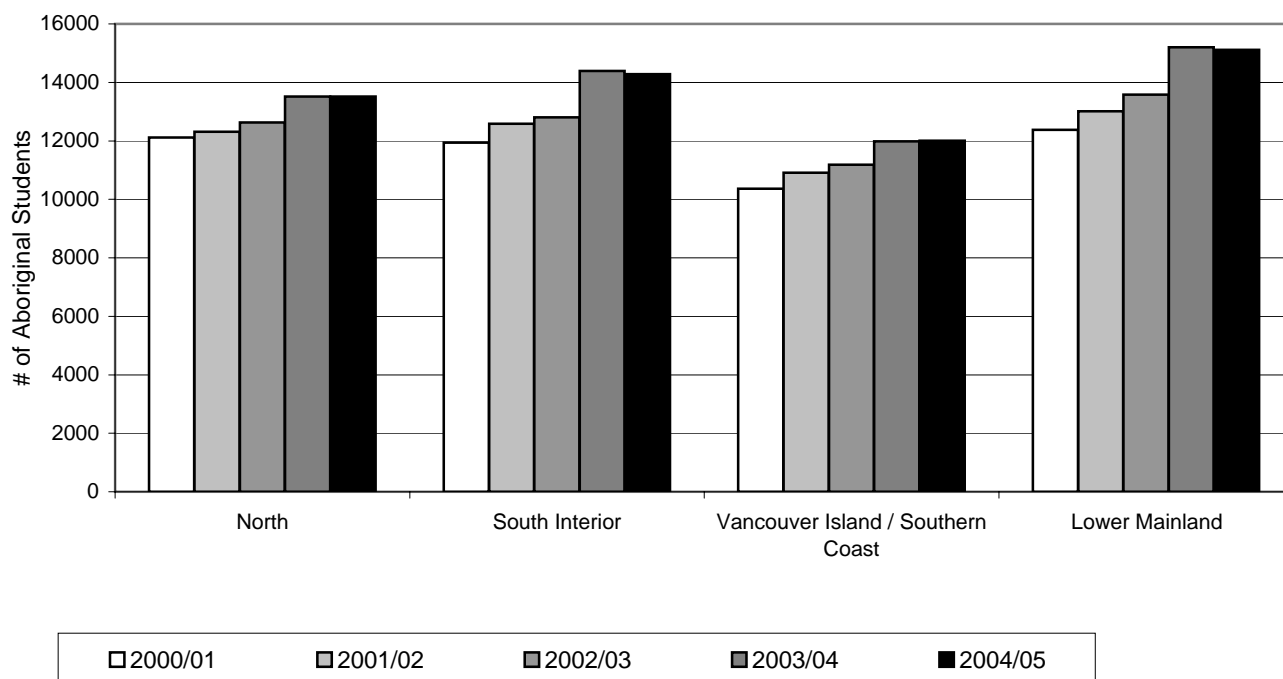
Notes:

- (1) Includes only Aboriginal students who have self-identified as being of Aboriginal ancestry (First Nations: status and non-status, Metis, and Inuit) on September 30th.
- (2) "Msk" indicates that the number cannot be displayed as it is based on fewer than five students (in accordance with the Freedom of Information and Protection of Privacy Legislation).

Provincial Overview Comments:

- (1) The number of On-reserve students in public schools has remained stable over the last five years.
- (2) There has been a steady increase in the number of Off-reserve students who self-identify as Aboriginal.
- (3) Eleven of the sixty public school districts have higher populations of On-reserve students.

***Distribution of Aboriginal Students in BC Public Schools by Region,
2000/01 - 2004/05***



Region	Aboriginal Students				
	2000/01	2001/02	2002/03	2003/04	2004/05
North	12111	12315	12625	13520	13511
South Interior	11935	12581	12802	14390	14287
Vancouver Island / Southern Coast	10364	10910	11187	11980	12001
Lower Mainland	12377	13014	13584	15202	15114

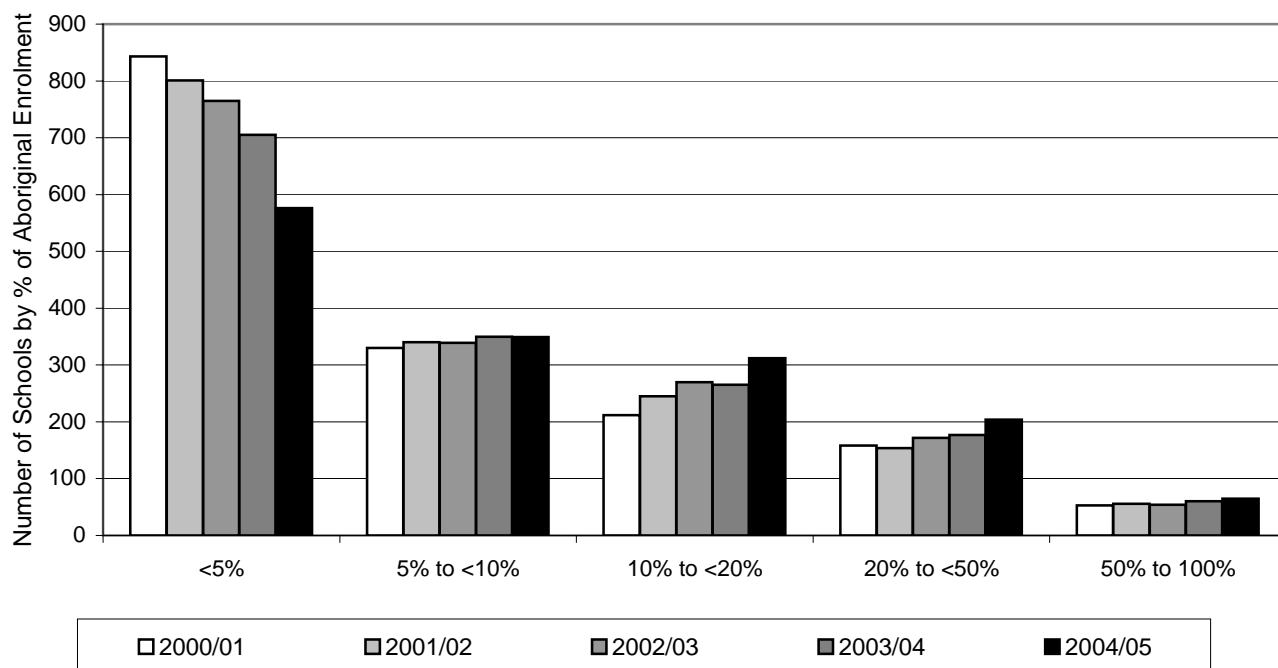
Notes:

- (1) North region includes school districts 050, 052, 054, 057, 059, 060, 081, 082, 087, 091, and 092.
 - (2) South Interior region includes school districts 005, 006, 008, 010, 019, 020, 022, 023, 027, 028, 051, 053, 058, 067, 073, 074, 078, and 083.
 - (3) Vancouver Island / Southern Coast region includes school districts 046, 047, 048, 049, 061, 062, 063, 064, 068, 069, 070, 071, 072, 079, 084, and 085.
 - (4) Lower Mainland region includes school districts 033, 034, 035, 036, 037, 038, 039, 040, 041, 042, 043, 044, 045, and 075.
- (1) Includes only Aboriginal students who have self-identified as being of Aboriginal ancestry (First Nations: status and non-status, Metis, and Inuit) on September 30th.

Provincial Overview Comments:

- (1) Due to increases in Aboriginal populations there has been a steady increase in the number Aboriginal students throughout the four regions.

Number of BC Standard Public Schools by Population of Aboriginal Enrolment, 2000/01 - 2004/05



Population of Aboriginal Enrolment	Number of Schools				
	2000/01	2001/02	2002/03	2003/04	2004/05
<5%	843	801	765	705	576
5% to <10%	330	340	339	350	349
10% to <20%	212	245	270	265	312
20% to <50%	158	154	172	177	204
50% to 100%	53	56	54	60	65

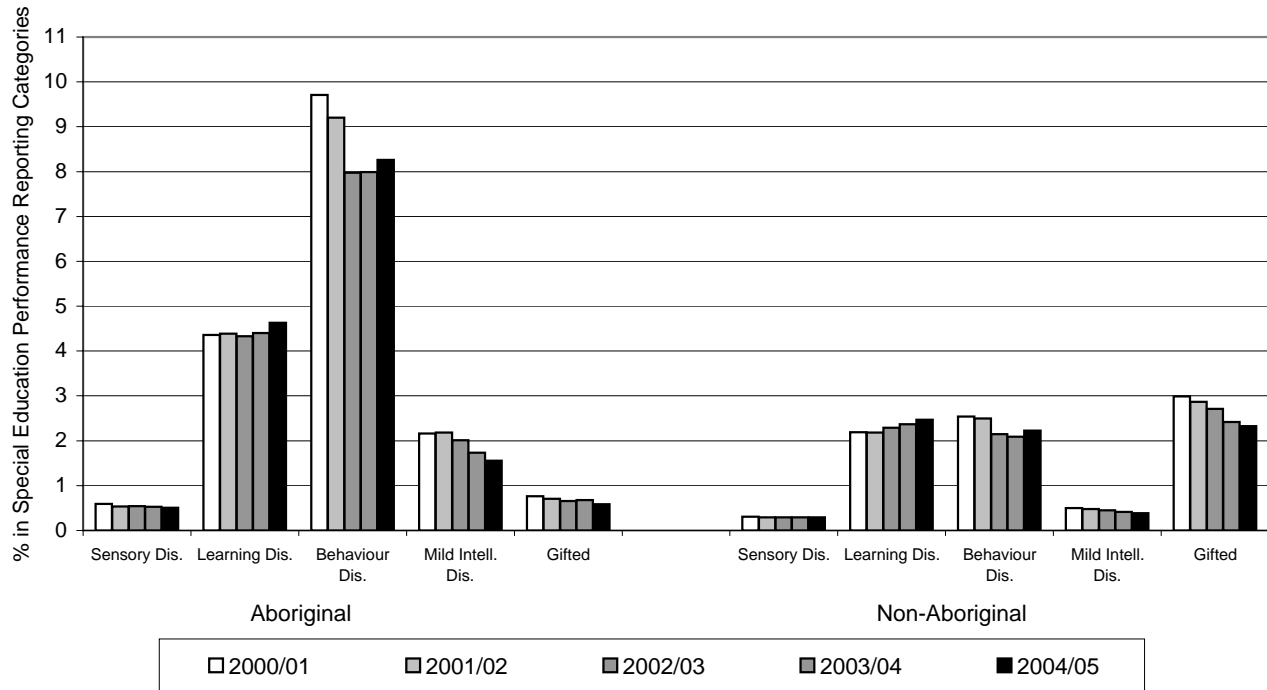
Notes:

- (1) Includes Standard public schools only.
- (2) Includes only Aboriginal students who have self-identified as being of Aboriginal ancestry (First Nations: status and non-status, Metis, and Inuit) on September 30th.

Provincial Overview Comments:

- (1) Approximately 38% of BC Standard public schools have fewer than 5% Aboriginal enrolment.
- (2) Approximately 44% of BC Standard public schools have between 5% and 19% Aboriginal enrolment.
- (3) Approximately 14% of BC Standard public schools have between 20% and 49% Aboriginal enrolment.
- (4) Approximately 4% of BC Standard public schools have Aboriginal enrolment equal to or greater than 50%.

Percentage of Students in Special Education Groups, 2000/01 - 2004/05
Province - Public Schools Only



School Year	Number of Special Education Students																			
	Sensory Disabilities		Learning Disabilities				Behaviour Disabilities				Mild Intellectual				Gifted					
	Aboriginal	Non-	Aboriginal	Non-	Aboriginal	Non-	Aboriginal	Non-	Aboriginal	Non-	Aboriginal	Non-	Aboriginal	Non-	Aboriginal	Non-	Aboriginal	Non-		
#	%	#	%	#	%	#	%	#	%	#	%	#	%	#	%	#	%	#	%	
2000/01	276	1	1776	0	2042	4	12805	2	4547	10	14880	3	1014	2	2915	0	359	1	17499	3
2001/02	261	1	1694	0	2147	4	12658	2	4502	9	14500	2	1066	2	2796	0	345	1	16644	3
2002/03	274	1	1683	0	2180	4	13054	2	4016	8	12251	2	1014	2	2548	0	330	1	15442	3
2003/04	291	1	1625	0	2436	4	13231	2	4417	8	11697	2	959	2	2317	0	375	1	13511	2
2004/05	280	1	1607	0	2551	5	13617	2	4553	8	12264	2	856	2	2115	0	322	1	12819	2

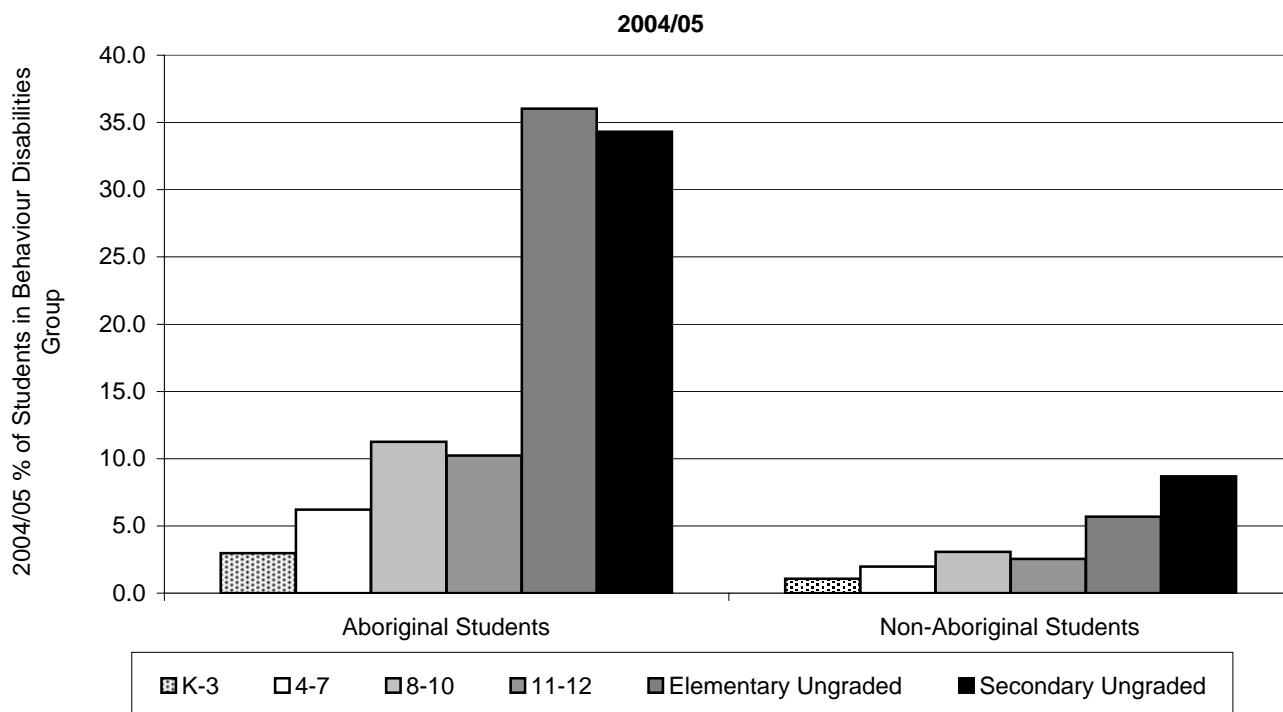
Notes:

- (1) Includes only Aboriginal students who have self-identified as being of Aboriginal ancestry (First Nations: status and non-status, Metis, and Inuit) on September 30th.
- (2) Performance Reporting Groups: Sensory Disabilities includes categories E (Visual Impairment) and F (Deaf or Hard of Hearing), Learning Disabilities includes category Q (Learning Disability), Behaviour Disabilities includes categories H (Intensive Behaviour Interventions / Serious Mental Illness) and R (Moderate Behaviour Support/Mental Illness), Mild Intellectual Disabilities includes category K (Mild Intellectual Disability), and Gifted includes category P (Gifted).
- (3) "Msk" indicates that the number cannot be displayed as it is based on fewer than five students (in accordance with the Freedom of Information and Protection of Privacy Legislation).

Provincial Overview Comments:

- (1) There continues to be an overrepresentation of Aboriginal students in the Behaviour Disabilities group.
- (2) For additional information see "*Overrepresentation of Aboriginal Students Identified with Behaviour Disorders*" report (2000).

**Percentage of Students in Special Education Behaviour Disabilities Group,
by Grade Grouping, 2000/01 - 2004/05 Province - Public Schools Only**



Grade Grouping	Number and Percent of Students in Special Education Behaviour Disabilities Group																			
	Aboriginal Students									Non-Aboriginal Students										
	2000/01		2001/02		2002/03		2003/04		2004/05		2000/01		2001/02		2002/03		2003/04		2004/05	
	#	%	#	%	#	%	#	%	#	%	#	%	#	%	#	%	#	%	#	%
K-3	495	4	431	3	375	3	413	3	398	3	1716	1	1632	1	1355	1	1431	1	1513	1
4-7	1099	8	1101	7	996	6	1039	6	1012	6	3640	2	3492	2	3126	2	3057	2	3157	2
8-10	1677	15	1578	14	1389	11	1693	12	1638	11	5203	4	5124	4	4420	3	4176	3	4166	3
11-12	732	10	802	11	640	9	700	8	949	10	3312	3	3407	3	2563	2	2399	2	2722	3
Elementary Ungraded	56	50	59	53	39	41	45	45	40	36	79	7	103	7	80	6	78	5	89	6
Secondary Ungraded	488	37	531	35	577	34	527	36	516	34	930	10	742	8	707	9	556	6	582	9

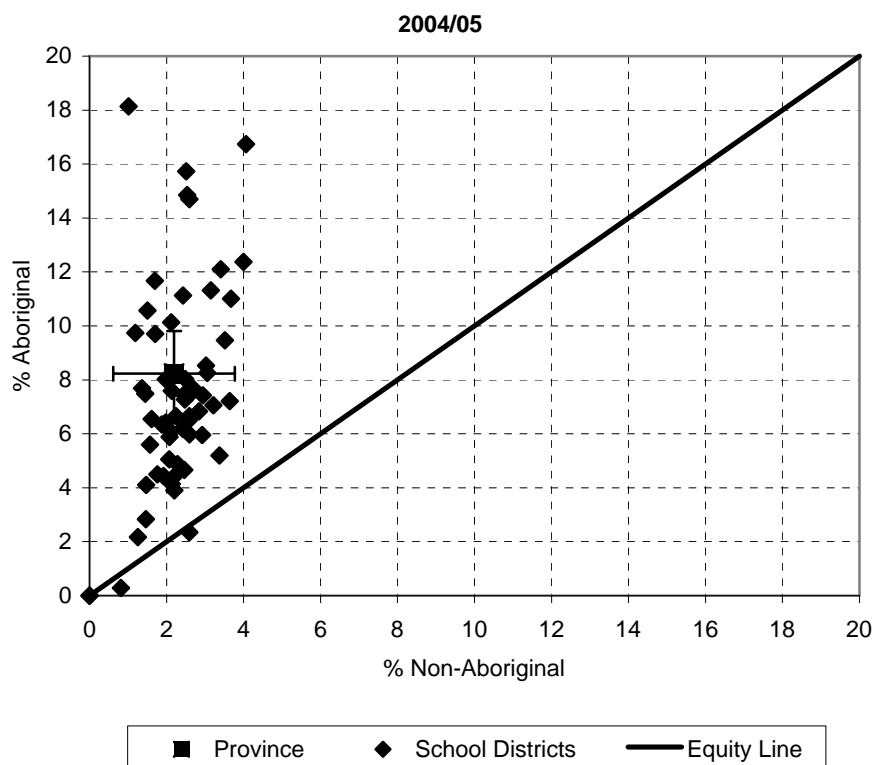
Notes:

- (1) Includes only Aboriginal students who have self-identified as being of Aboriginal ancestry (First Nations: status and non-status, Metis, and Inuit) on September 30th.
- (2) Behaviour Disabilities group includes categories H (Intensive Behaviour Interventions / Serious Mental Illness) and R (Moderate Behaviour Support/Mental Illness).
- (3) "Msk" indicates that the number cannot be displayed as it is based on fewer than five students (in accordance with the Freedom of Information and Protection of Privacy Legislation).

Provincial Overview Comments:

- (1) Definition of elementary and secondary ungraded (taken from 1701 Instructions) "the student is not in a specific elementary or secondary grade. Ungraded students are not necessarily special education students. The ungraded categories include students who are taking courses at a number of levels and the school personnel do not consider the student to be in a specific grade level"

**Percentage of Students in Special Education Behaviour Disabilities Group,
2000/00 - 2004/05**



School Year	Provincial Percentage of Students in Special Education Behaviour Disabilities Group	
	Aboriginal	Non-Aboriginal
2000/01	10.2	2.6
2001/02	9.6	2.5
2002/03	8.2	2.1
2003/04	8.8	2.1
2004/05	8.2	2.2

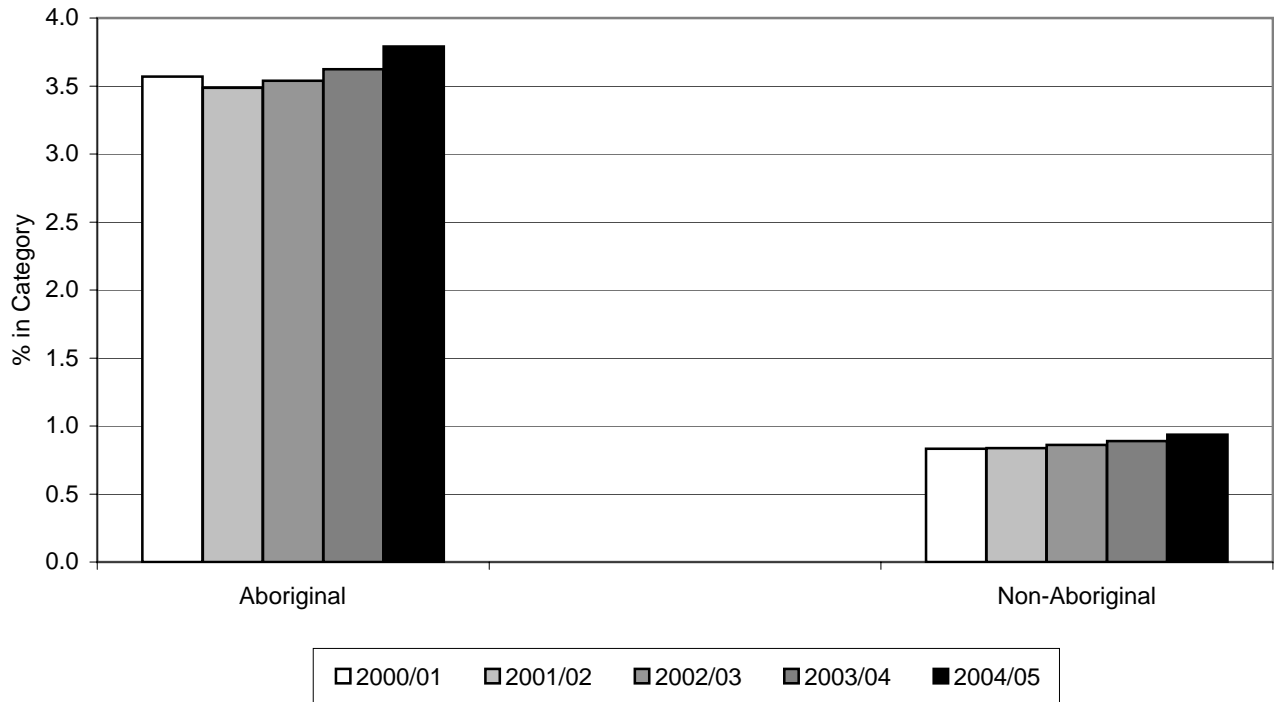
Notes:

- (1) Includes only Aboriginal students who have self-identified as being of Aboriginal ancestry (First Nations: status and non-status, Metis, and Inuit) on September 30th.
- (2) Behaviour Disabilities group includes categories H (Intensive Behaviour Interventions / Serious Mental Illness) and R (Moderate Behaviour Support/Mental Illness).
- (3) Not all public school districts are displayed as the numbers are based on fewer than five students (in accordance with the Freedom of Information and Protection of Privacy Legislation).

Provincial Overview Comments:

- (1) Graph represents the 2004/05 school year only.

**Percentage of Students in Intensive Behaviour Interventions / Serious Mental Illness
Special Education Category, 2000/01 - 2004/05
Province - Public Schools Only**



School Year	Students in Intensive Behaviour Interventions / Serious Mental Illness Category			
	Aboriginal		Non-Aboriginal	
	#	%	#	%
2000/01	1672	3.6	4869	0.8
2001/02	1705	3.5	4868	0.8
2002/03	1782	3.5	4910	0.9
2003/04	2004	3.6	4970	0.9
2004/05	2090	3.8	5165	0.9

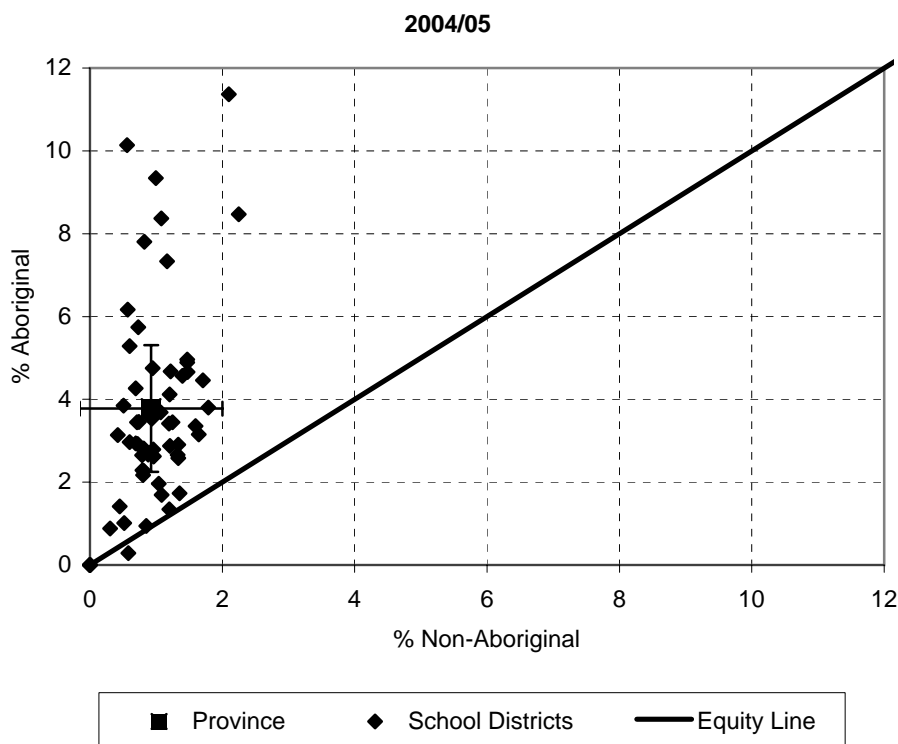
Notes:

- (1) Includes only Aboriginal students who have self-identified as being of Aboriginal ancestry (First Nations: status and non-status, Metis, and Inuit) on September 30th.
- (2) The *Intensive Behaviour Interventions / Serious Mental Illness* Special Education Category was changed in name from *Severe Behaviour* in 2002/03.
- (3) "Msk" indicates that the number cannot be displayed as it is based on fewer than five students (in accordance with the Freedom of Information and Protection of Privacy Legislation).

Provincial Overview Comments:

- (1) There has been a steady increase of Aboriginal students in the Intensive Behaviour Interventions / Serious Mental Illness category, progressing from 3.6% in 2000/01 to 3.8% in 2004/05.

**Percentage of Students in Intensive Behaviour Interventions / Serious Mental Illness
Special Education Category, 2000/01 - 2004/05**



School Year	Provincial Percentage of Students in Intensive Behaviour Interventions / Serious Mental Illness Category	
	Aboriginal	Non-Aboriginal
2000/01	3.7	0.9
2001/02	3.6	0.9
2002/03	3.6	0.9
2003/04	4.0	0.9
2004/05	3.8	0.9

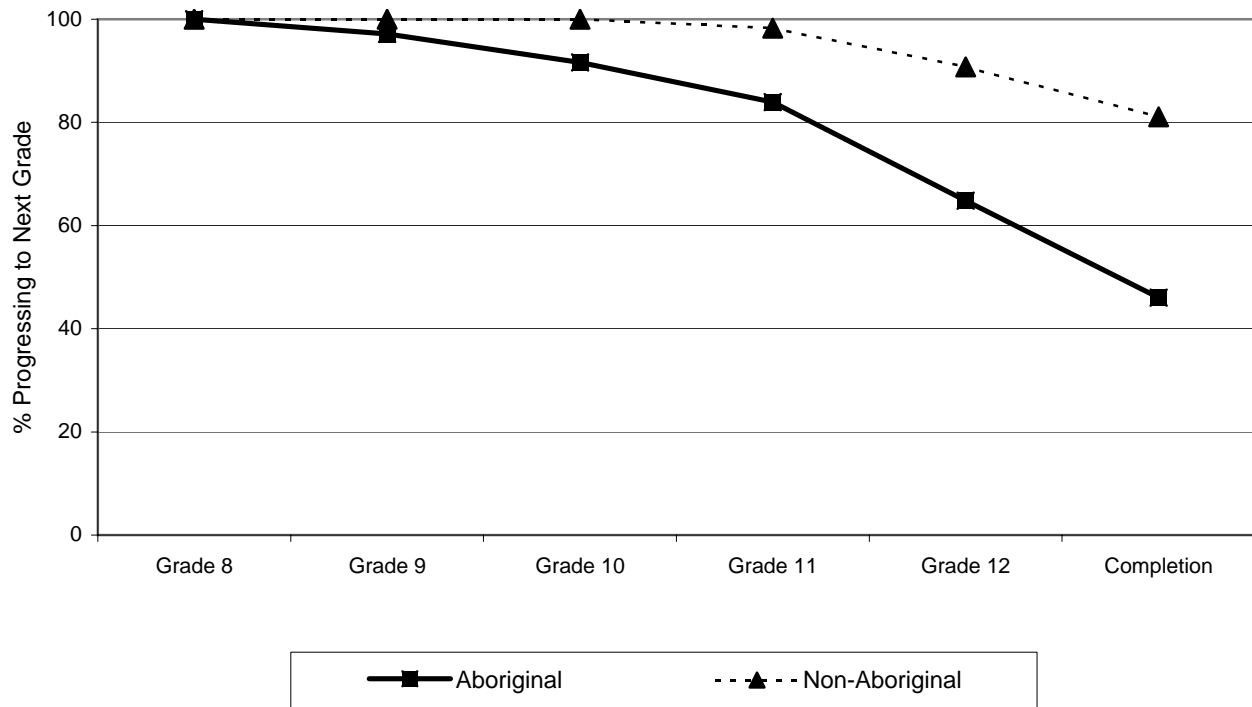
Notes:

- (1) Includes only Aboriginal students who have self-identified as being of Aboriginal ancestry (First Nations: status and non-status, Metis, and Inuit) on September 30th.
- (2) The *Intensive Behaviour Interventions / Serious Mental Illness* Special Education Category was changed in name from *Severe Behaviour* in 2002/03.
- (3) Not all public school districts are displayed as the numbers are based on fewer than five students (in accordance with the Freedom of Information and Protection of Privacy Legislation).

Provincial Overview Comments:

- (1) Graph represents the 2004/05 school year only.

**Secondary School Progress of Students Entering Grade 8 in 1998
Province - Public Schools Only**



School Year	Secondary School Progress of Students Entering Grade 8 in 1998 (%)	
	Aboriginal	Non-Aboriginal
Grade 8	100	100
Grade 9	97	100
Grade 10	92	100
Grade 11	84	98
Grade 12	65	91
Completion	46	81

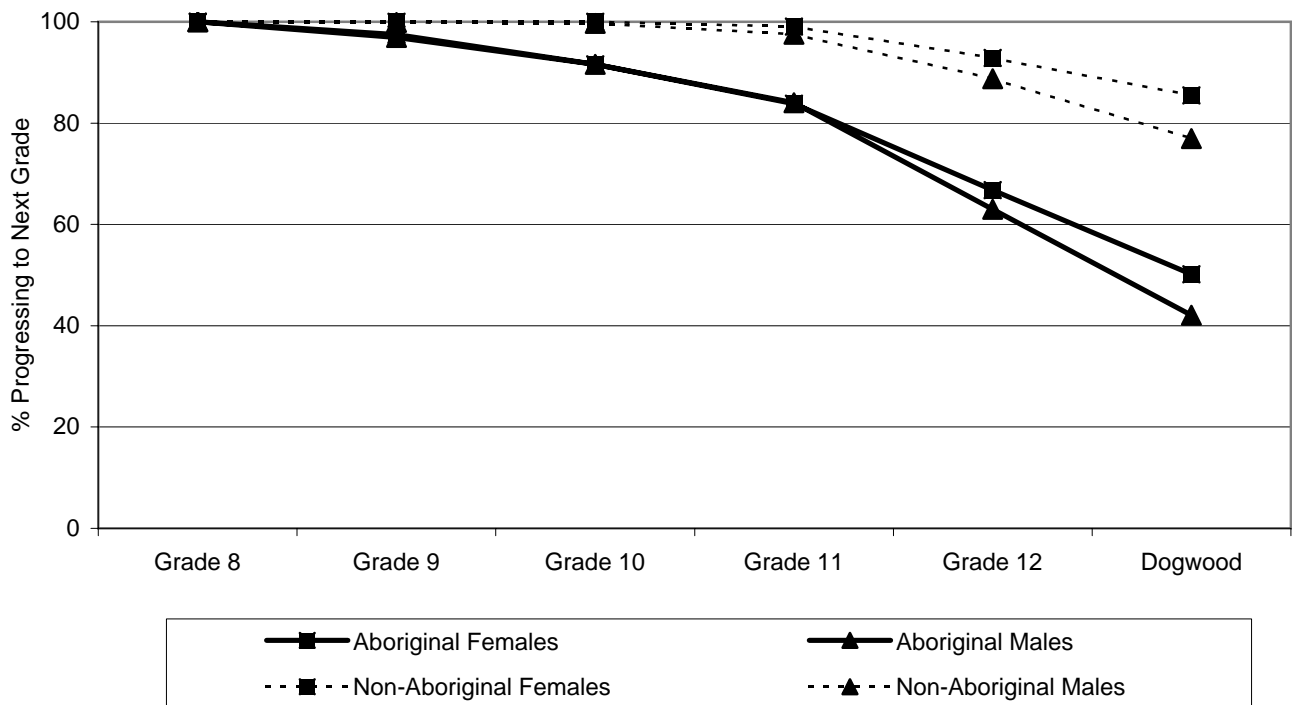
Notes:

- (1) Includes only Aboriginal students who have self-identified as being of Aboriginal ancestry (First Nations: status and non-status, Metis, and Inuit) on September 30th.
- (2) Grade transition includes transitions to a higher grade in any school type.
- (3) "Msk" indicates that the number cannot be displayed as it is based on fewer than five students (in accordance with the Freedom of Information and Protection of Privacy Legislation).

Provincial Overview Comments:

- (1) The Six-Year Dogwood Completion Rate for Aboriginal students was 46% in 2003/04.

**Secondary School Progress of Students Entering Grade 8 in 1998, by Gender
Province - Public Schools Only**



School Year	Secondary School Progress of Students Entering Grade 8 in 1998 (%)			
	Aboriginal Females	Aboriginal Males	Non-Aboriginal Females	Non-Aboriginal Males
Grade 8	100	100	100	100
Grade 9	97	97	100	100
Grade 10	92	92	100	100
Grade 11	84	84	99	98
Grade 12	67	63	93	89
Completion	50	42	85	77

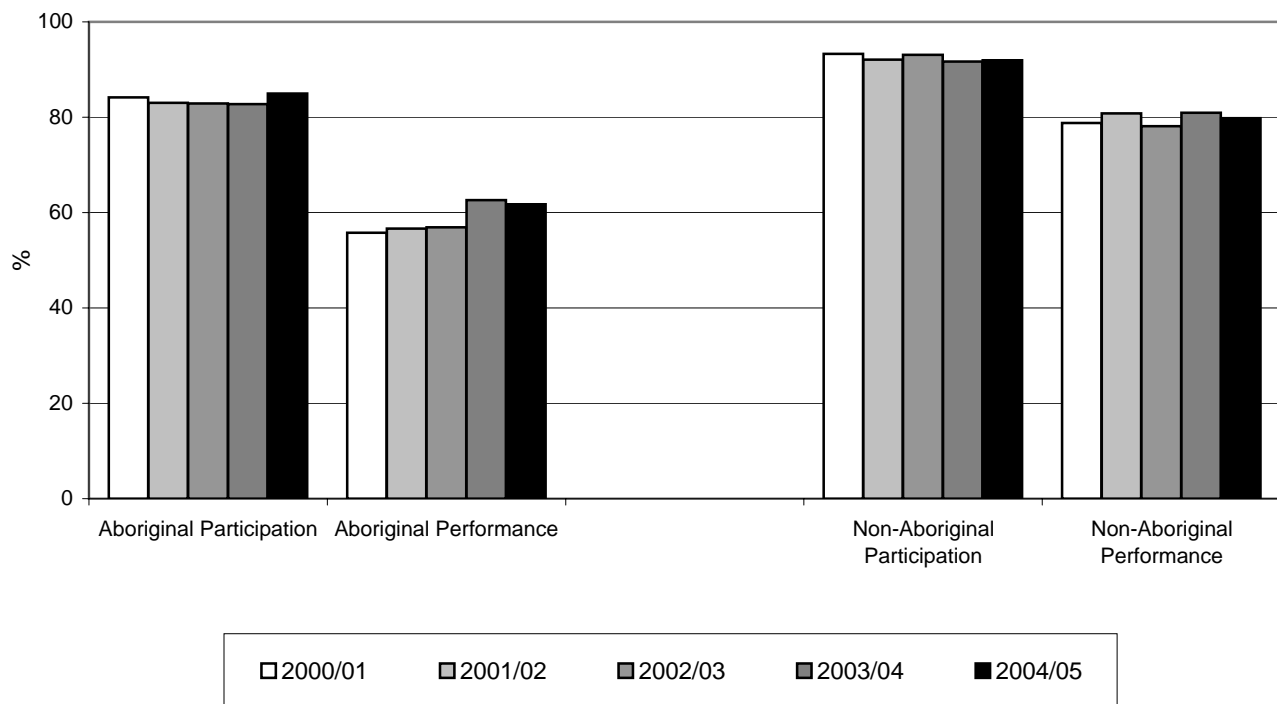
Notes:

- (1) Includes only Aboriginal students who have self-identified as being of Aboriginal ancestry (First Nations: status and non-status, Metis, and Inuit) on September 30th.
- (2) Grade transition includes transitions to a higher grade in any school type.
- (3) "Msk" indicates that the number cannot be displayed as it is based on fewer than five students (in accordance with the Freedom of Information and Protection of Privacy Legislation).

Provincial Overview Comments:

- (1) The Six-Year Dogwood Completion Rate for Aboriginal females was 50% in 2003/04.
- (2) The Six-Year Dogwood Completion Rate for Aboriginal males was 42% in 2003/04.
- (3) Combined, the Six-Year Dogwood Completion Rate for Aboriginal students was 46% in 2003/04.

**Reading Comprehension - Grade 4 Students - Foundation Skills Assessment,
2000/01 - 2004/05 Province - Public Schools Only**



School Year	Reading Comprehension Grade 4 FSA							
	Aboriginal Students				Non-Aboriginal Students			
	Participation		Meeting or Exceeding		Participation		Meeting or Exceeding	
	#	%	#	%	#	%	#	%
2000/01	3077	84	1653	56	38370	93	29943	79
2001/02	3075	83	1668	57	37697	92	30070	81
2002/03	3051	83	1668	57	36740	93	28297	78
2003/04	3288	83	2028	63	36086	92	29050	81
2004/05	3273	85	1902	62	35500	92	27807	80

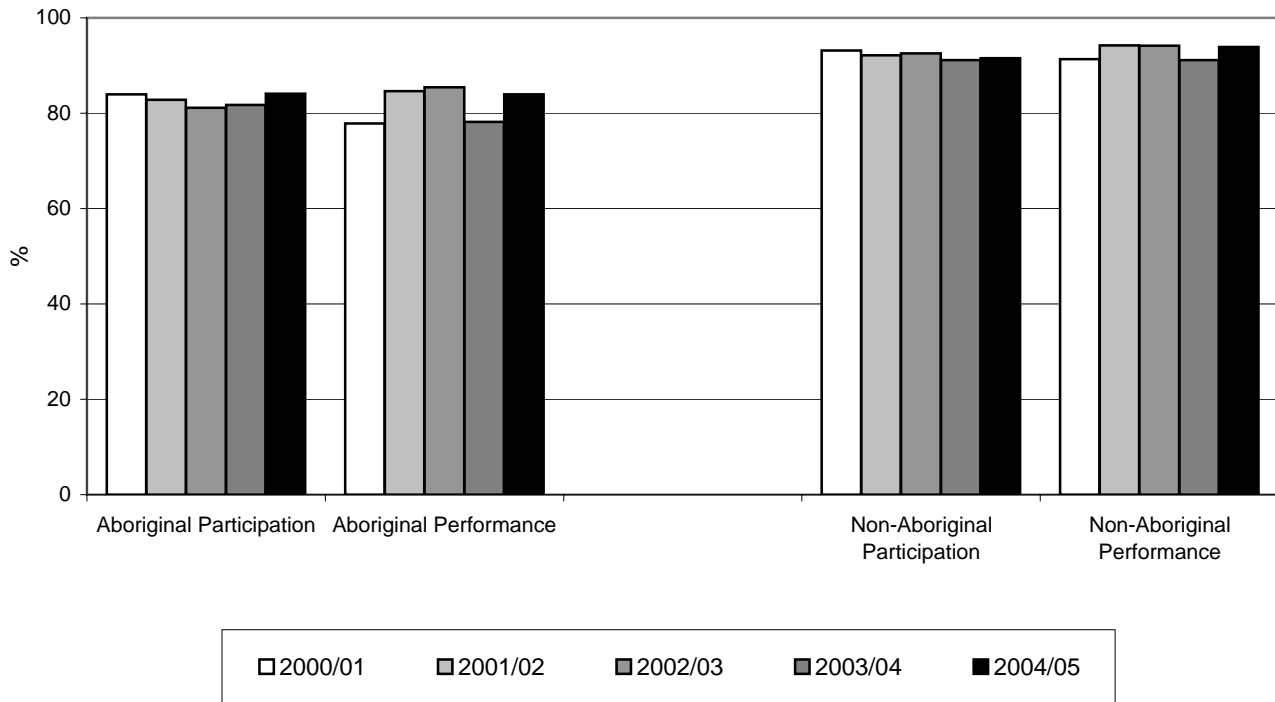
Notes:

- (1) Includes only Aboriginal students who have self-identified as being of Aboriginal ancestry (First Nations: status and non-status, Metis, and Inuit) on September 30th.
- (2) "Msk" indicates that the number cannot be displayed as it is based on fewer than five students (in accordance with the Freedom of Information and Protection of Privacy Legislation).

Provincial Overview Comments:

- (1) The percentage of grade 4 Aboriginal students meeting or exceeding expectations has increased from 56% in 2000/01 to 62% in 2004/05.

**Writing - Grade 4 Students - Foundation Skills Assessment,
2000/01 - 2004/05 Province - Public Schools Only**



School Year	Writing Grade 4 FSA							
	Aboriginal Students				Non-Aboriginal Students			
	Participation		Meeting or Exceeding		Participation		Meeting or Exceeding	
	#	%	#	%	#	%	#	%
2000/01	3070	84	2319	78	38307	93	34582	91
2001/02	3069	83	2461	85	37719	92	35103	94
2002/03	2987	81	2382	85	36518	93	33493	94
2003/04	3248	82	2447	78	35880	91	32262	91
2004/05	3241	84	2616	84	35343	92	32688	94

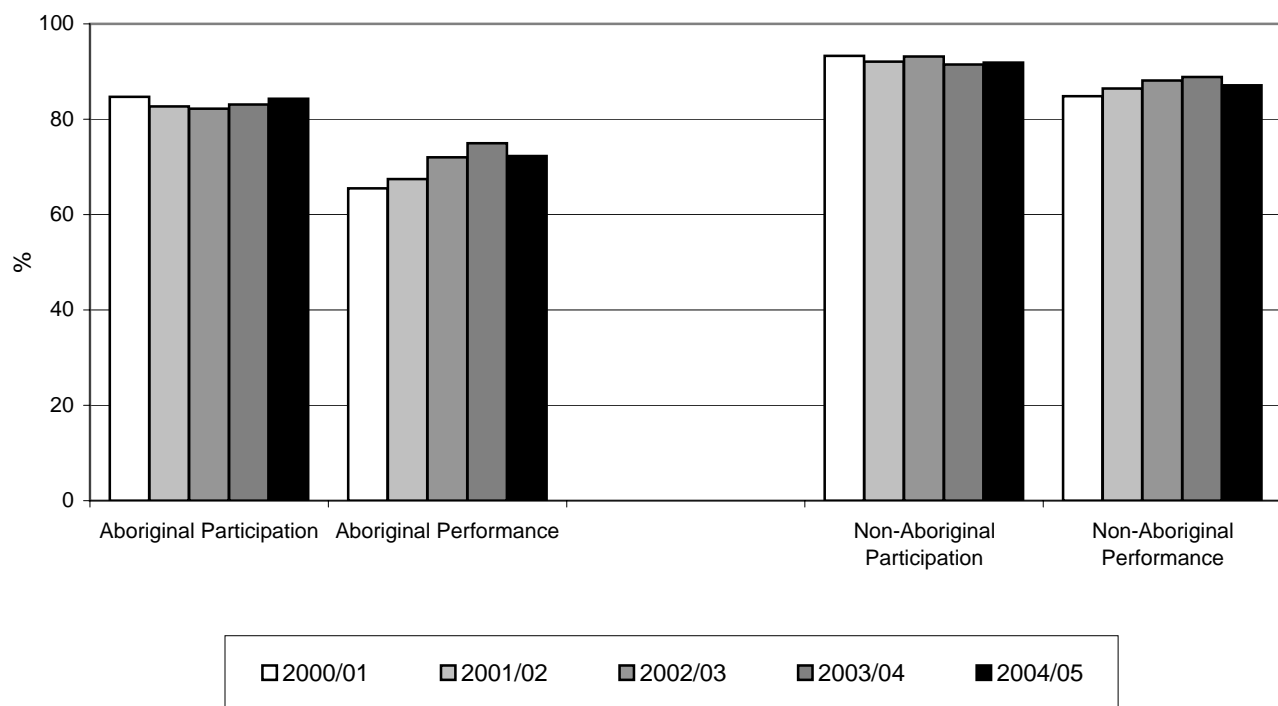
Notes:

- (1) Includes only Aboriginal students who have self-identified as being of Aboriginal ancestry (First Nations: status and non-status, Metis, and Inuit) on September 30th.
- (2) "Msk" indicates that the number cannot be displayed as it is based on fewer than five students (in accordance with the Freedom of Information and Protection of Privacy Legislation).

Provincial Overview Comments:

- (1) The percentage of grade 4 Aboriginal students meeting or exceeding expectations has increased from 78% in 2000/01 to 84% in 2004/05.

**Numeracy - Grade 4 Students - Foundation Skills Assessment,
2000/01 - 2004/05 Province - Public Schools Only**



School Year	Numeracy Grade 4 FSA							
	Aboriginal Students				Non-Aboriginal Students			
	Participation		Meeting or Exceeding		Participation		Meeting or Exceeding	
	#	%	#	%	#	%	#	%
2000/01	3096	85	1961	65	38366	93	32214	85
2001/02	3063	83	1995	67	37679	92	32226	86
2002/03	3027	82	2087	72	36759	93	31899	88
2003/04	3299	83	2379	75	36024	91	31479	89
2004/05	3249	84	2235	72	35453	92	30342	87

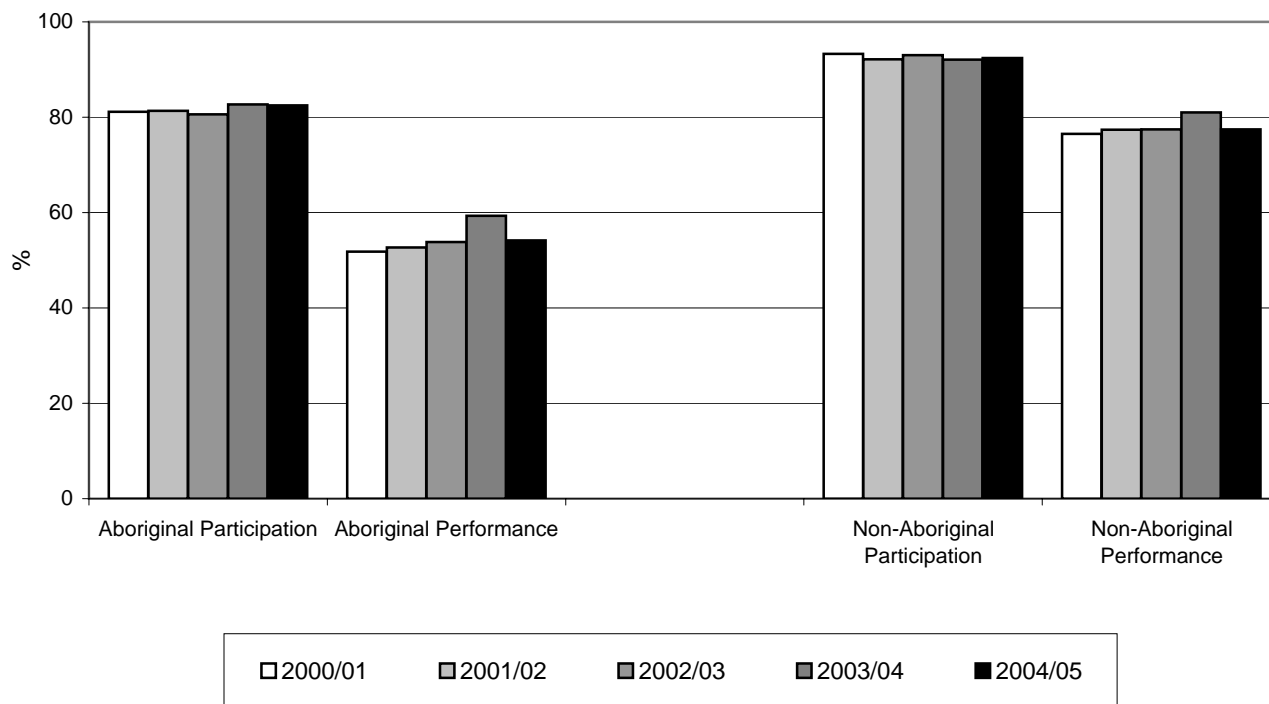
Notes:

- (1) Includes only Aboriginal students who have self-identified as being of Aboriginal ancestry (First Nations: status and non-status, Metis, and Inuit) on September 30th.
- (2) "Msk" indicates that the number cannot be displayed as it is based on fewer than five students (in accordance with the Freedom of Information and Protection of Privacy Legislation).

Provincial Overview Comments:

- (1) The percentage of grade 4 Aboriginal students meeting or exceeding expectations has increased from 65% in 2000/01 to 72% in 2004/05.

**Reading Comprehension - Grade 7 Students - Foundation Skills Assessment,
2000/01 - 2004/05 Province - Public Schools Only**



School Year	Reading Comprehension Grade 7 FSA							
	Aboriginal Students				Non-Aboriginal Students			
	Participation		Meeting or Exceeding		Participation		Meeting or Exceeding	
	#	%	#	%	#	%	#	%
2000/01	2908	81	1471	52	39988	93	30344	77
2001/02	3080	81	1577	53	39239	92	30088	77
2002/03	3249	81	1701	54	40044	93	30641	77
2003/04	3781	83	2214	59	38323	92	30886	81
2004/05	3520	83	1850	54	38615	92	29683	77

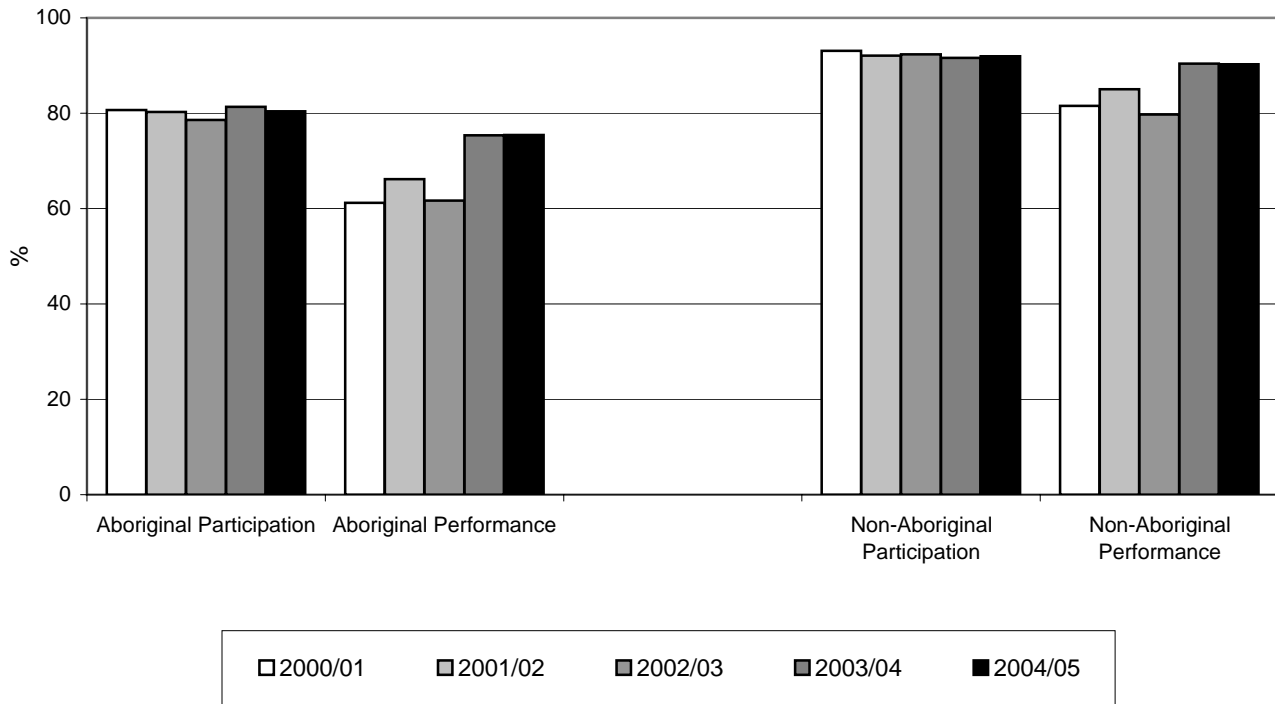
Notes:

- (1) Includes only Aboriginal students who have self-identified as being of Aboriginal ancestry (First Nations: status and non-status, Metis, and Inuit) on September 30th.
- (2) "Msk" indicates that the number cannot be displayed as it is based on fewer than five students (in accordance with the Freedom of Information and Protection of Privacy Legislation).

Provincial Overview Comments:

- (1) There has been an increase in the percentage of grade 7 Aboriginal students meeting or exceeding expectations, from 52% in 2000/01 to 54% in 2004/05.

**Writing - Grade 7 Students - Foundation Skills Assessment,
2000/01 - 2004/05 Province - Public Schools Only**



School Year	Writing Grade 7 FSA							
	Aboriginal Students				Non-Aboriginal Students			
	Participation		Meeting or Exceeding		Participation		Meeting or Exceeding	
	#	%	#	%	#	%	#	%
2000/01	2892	81	1725	61	39907	93	32221	82
2001/02	3041	80	1902	66	39211	92	32786	85
2002/03	3169	79	1876	62	39746	92	31177	80
2003/04	3721	81	2711	75	38135	92	34051	90
2004/05	3430	80	2495	75	38413	92	34134	90

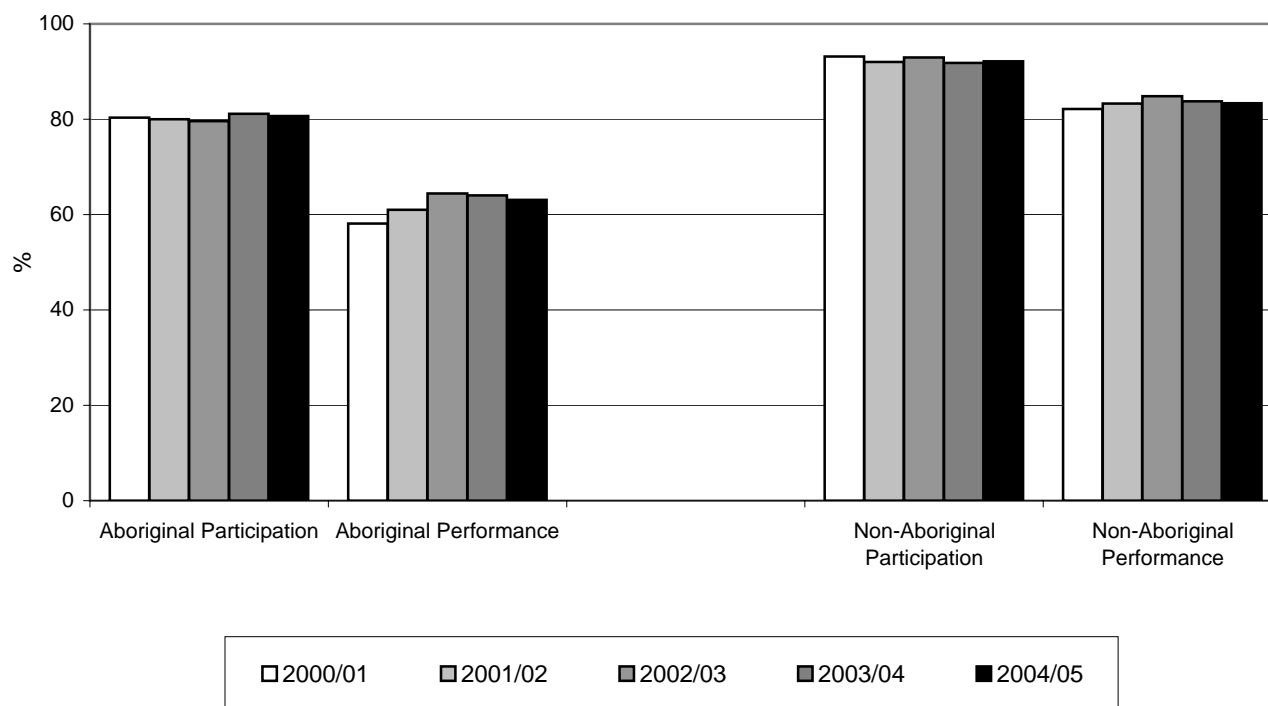
Notes:

- (1) Includes only Aboriginal students who have self-identified as being of Aboriginal ancestry (First Nations: status and non-status, Metis, and Inuit) on September 30th.
- (2) "Msk" indicates that the number cannot be displayed as it is based on fewer than five students (in accordance with the Freedom of Information and Protection of Privacy Legislation).

Provincial Overview Comments:

- (1) The percentage of grade 7 Aboriginal students participating has fluctuated between 79% and 81% since 2000/01.

**Numeracy - Grade 7 Students - Foundation Skills Assessment,
2000/01 - 2004/05 Province - Public Schools Only**



School Year	Numeracy Grade 7 FSA							
	Aboriginal Students				Non-Aboriginal Students			
	Participation		Meeting or Exceeding		Participation		Meeting or Exceeding	
	#	%	#	%	#	%	#	%
2000/01	2879	80	1627	58	39923	93	32363	82
2001/02	3030	80	1770	61	39198	92	32225	83
2002/03	3209	80	1992	64	40004	93	33484	85
2003/04	3711	81	2273	64	38221	92	31498	84
2004/05	3442	81	2056	63	38508	92	31472	83

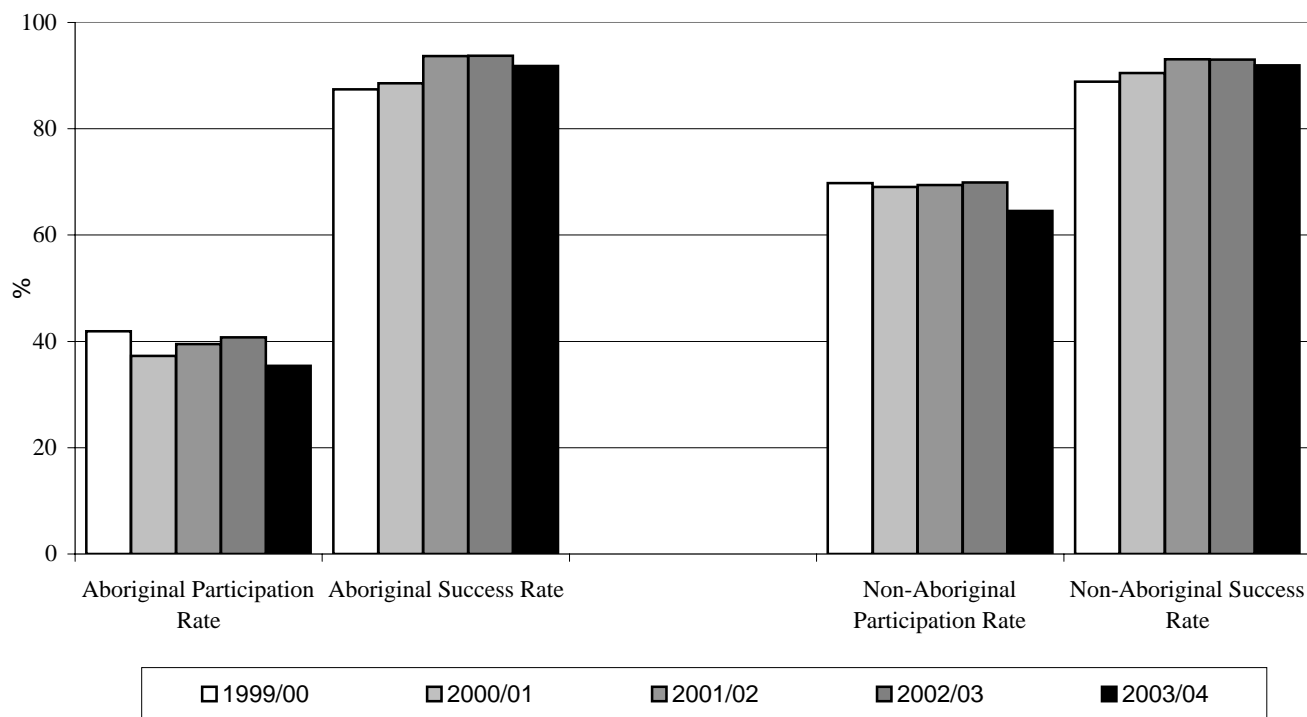
Notes:

- (1) Includes only Aboriginal students who have self-identified as being of Aboriginal ancestry (First Nations: status and non-status, Metis, and Inuit) on September 30th.
- (2) "Msk" indicates that the number cannot be displayed as it is based on fewer than five students (in accordance with the Freedom of Information and Protection of Privacy Legislation).

Provincial Overview Comments:

- (1) There has been an increase in the percentage of grade 7 Aboriginal students meeting or exceeding expectations, from 58% in 2000/01 to 63% in 2004/05.

English 12 Participation and Success Rate, 1994/95 - 2003/04
Province - Public Schools Only



School Year	Aboriginal				Non-Aboriginal			
	Participation Rate		Success Rate		Participation Rate		Success Rate	
	#	%	#	%	#	%	#	%
1994/95	796	41	661	83	29880	67	27846	90
1995/96	904	44	769	85	30962	71	29206	91
1996/97	912	44	786	86	32355	71	31180	93
1997/98	929	40	802	86	34605	69	32498	91
1998/99	972	42	820	84	35452	70	32624	89
1999/00	1146	42	1002	87	36749	70	33767	89
2000/01	1077	37	954	89	36756	69	34376	91
2001/02	1186	39	1111	94	37749	69	36330	93
2002/03	1311	41	1229	94	38178	70	36739	93
2003/04	1262	35	1163	92	36163	65	33937	92

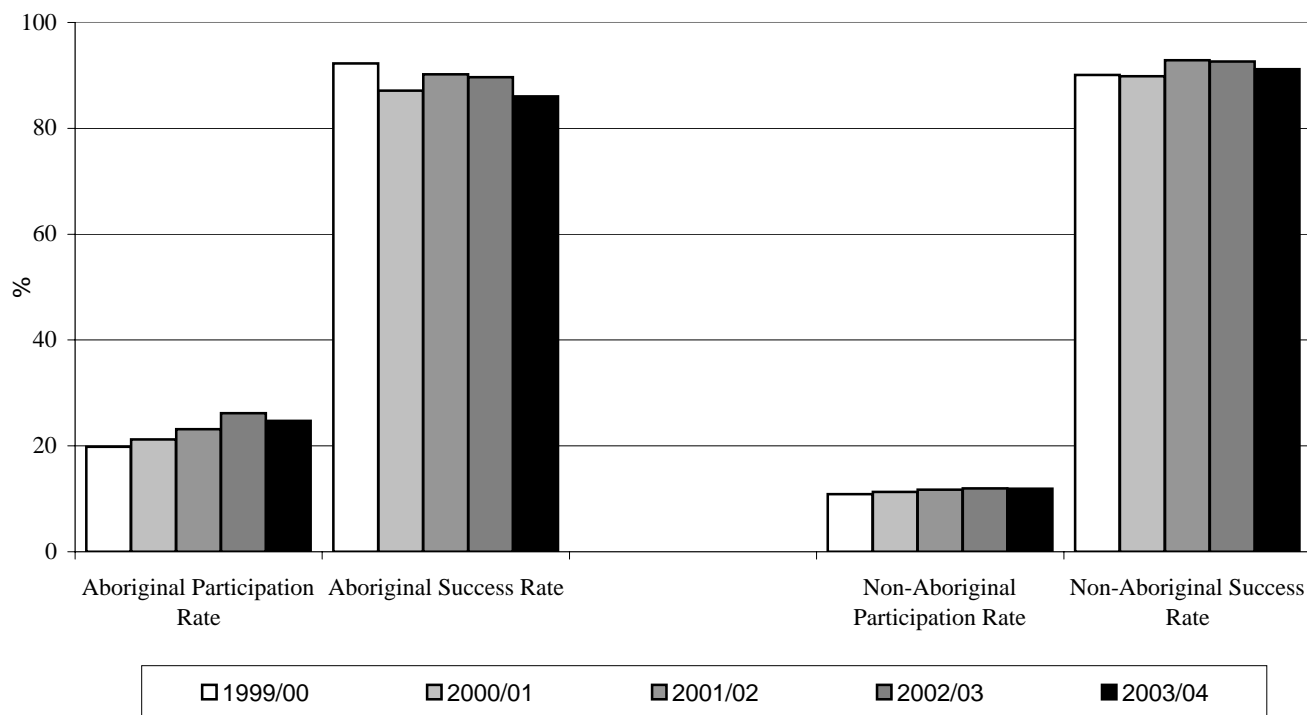
Notes:

- (1) Includes only Aboriginal students who have self-identified as being of Aboriginal ancestry (First Nations: status and non-status, Metis, and Inuit) on September 30th.
- (2) Participation number is the count of unique exam writers. Participation percent is the count of unique exam writers divided by the number of grade 12 students on September 30th. Success Rate is the students who received a grade of C- or better.
- (3) "Msk" indicates that the number cannot be displayed as it is based on fewer than five students (in accordance with the Freedom of Information and Protection of Privacy Legislation).

Provincial Overview Comments:

- (1) There has been a decrease in participation from 41% in 2002/03 to 35% in 2003/04.
- (2) Aboriginal students when participating perform very well on the provincial exam.

Communications 12 Participation and Success Rate, 1994/95 - 2003/04
Province - Public Schools Only



School Year	Aboriginal				Non-Aboriginal			
	Participation Rate		Success Rate		Participation Rate		Success Rate	
	#	%	#	%	#	%	#	%
1994/95	349	18	293	84	4560	10	4088	87
1995/96	381	19	337	88	4741	11	4440	89
1996/97	358	17	303	85	4592	10	4246	89
1997/98	383	17	331	86	4760	9	4238	87
1998/99	471	20	397	84	5230	10	4692	87
1999/00	543	20	501	92	5734	11	5355	90
2000/01	613	21	534	87	6019	11	5596	90
2001/02	696	23	628	90	6376	12	6118	93
2002/03	842	26	755	90	6553	12	6282	93
2003/04	881	25	758	86	6661	12	6135	91

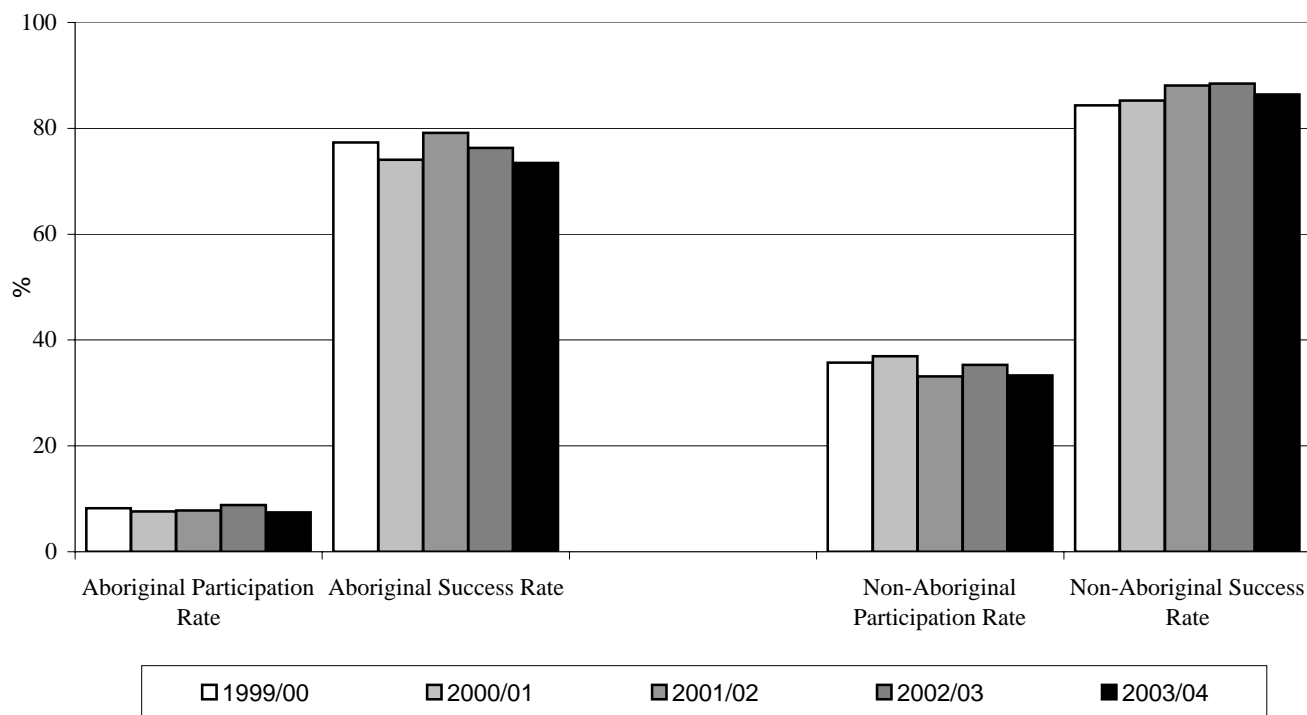
Notes:

- (1) Includes only Aboriginal students who have self-identified as being of Aboriginal ancestry (First Nations: status and non-status, Metis, and Inuit) on September 30th.
- (2) Participation number is the count of unique exam writers. Participation percent is the count of unique exam writers divided by the number of grade 12 students on September 30th. Success Rate is the students who received a grade of C- or better.
- (3) "Msk" indicates that the number cannot be displayed as it is based on fewer than five students (in accordance with the Freedom of Information and Protection of Privacy Legislation).

Provincial Overview Comments:

- (1) Generally there has been a steady increase in the number of Aboriginal students participating in the course.

Math 12 Participation and Success Rate, 1994/95 - 2003/04
Province - Public Schools Only



School Year	Aboriginal				Non-Aboriginal			
	Participation Rate		Success Rate		Participation Rate		Success Rate	
	#	%	#	%	#	%	#	%
1994/95	168	9	105	63	15289	34	12835	82
1995/96	178	9	126	71	15927	36	13759	83
1996/97	188	9	142	76	16721	37	14451	83
1997/98	205	9	134	65	17825	35	15557	85
1998/99	198	8	142	72	18372	36	15945	84
1999/00	225	8	174	77	18799	36	16418	84
2000/01	220	8	163	74	19678	37	17407	85
2001/02	235	8	186	79	18013	33	16454	88
2002/03	283	9	216	76	19284	35	17690	88
2003/04	264	7	194	73	18670	33	16463	86

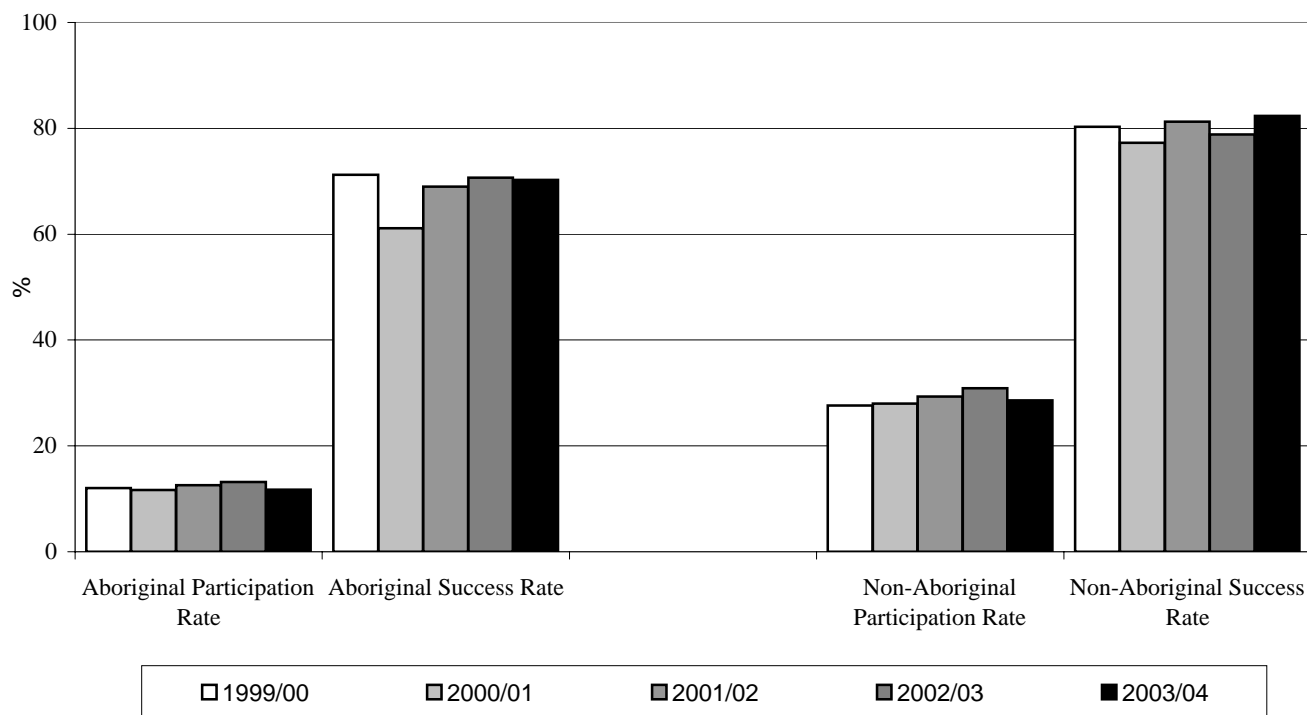
Notes:

- (1) Includes only Aboriginal students who have self-identified as being of Aboriginal ancestry (First Nations: status and non-status, Metis, and Inuit) on September 30th.
- (2) Participation number is the count of unique exam writers. Participation percent is the count of unique exam writers divided by the number of grade 12 students on September 30th. Success Rate is the students who received a grade of C- or better.
- (3) "Msk" indicates that the number cannot be displayed as it is based on fewer than five students (in accordance with the Freedom of Information and Protection of Privacy Legislation).

Provincial Overview Comments:

- (1) Aboriginal student participation in Principles of Mathematics 12 has fluctuated over the last few year with only 7% of the Aboriginal population participating in 2003/04.

Biology 12 Participation and Success Rate, 1994/95 - 2003/04
Province - Public Schools Only



School Year	Aboriginal				Non-Aboriginal			
	Participation Rate		Success Rate		Participation Rate		Success Rate	
	#	%	#	%	#	%	#	%
1994/95	220	11	151	69	10998	25	9383	83
1995/96	253	12	187	74	11819	27	10391	85
1996/97	267	13	198	74	12327	27	10491	83
1997/98	277	12	178	64	13281	26	10842	80
1998/99	297	13	205	69	13626	27	11098	80
1999/00	330	12	235	71	14537	28	12031	80
2000/01	337	12	206	61	14915	28	11932	77
2001/02	377	13	260	69	15931	29	13469	81
2002/03	423	13	299	71	16881	31	13795	79
2003/04	417	12	293	70	16040	29	13561	82

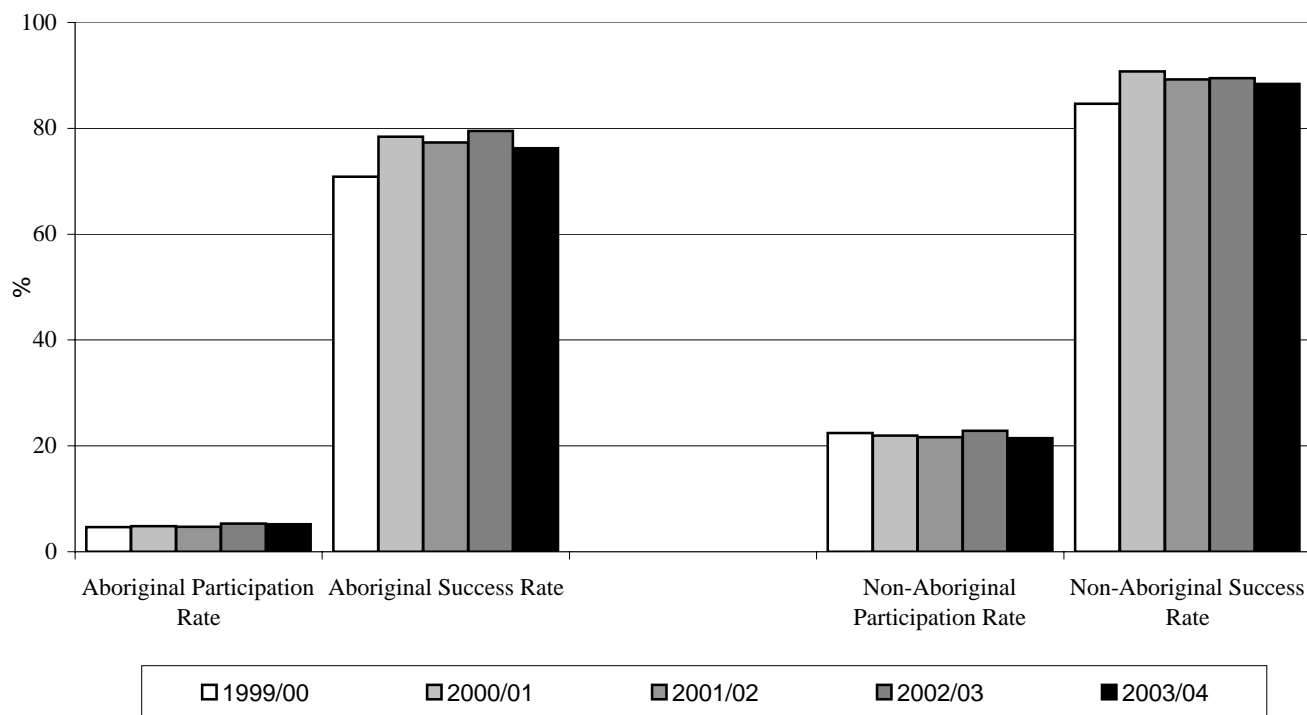
Notes:

- (1) Includes only Aboriginal students who have self-identified as being of Aboriginal ancestry (First Nations: status and non-status, Metis, and Inuit) on September 30th.
- (2) Participation number is the count of unique exam writers. Participation percent is the count of unique exam writers divided by the number of grade 12 students on September 30th. Success Rate is the students who received a grade of C- or better.
- (3) "Msk" indicates that the number cannot be displayed as it is based on fewer than five students (in accordance with the Freedom of Information and Protection of Privacy Legislation).

Provincial Overview Comments:

- (1) Aboriginal student participation in Biology 12 has fluctuated between 11% and 13%.

Chemistry 12 Participation and Success Rate, 1994/95 - 2003/04
Province - Public Schools Only



School Year	Aboriginal				Non-Aboriginal			
	Participation Rate		Success Rate		Participation Rate		Success Rate	
	#	%	#	%	#	%	#	%
1994/95	100	5	76	76	9816	22	8519	85
1995/96	107	5	91	85	10374	24	9373	88
1996/97	104	5	85	82	10429	23	9180	86
1997/98	112	5	82	73	11154	22	9988	88
1998/99	118	5	82	69	11522	23	10038	85
1999/00	127	5	90	71	11820	22	10235	85
2000/01	139	5	109	78	11698	22	10846	91
2001/02	141	5	109	77	11765	22	10752	89
2002/03	171	5	136	80	12477	23	11407	89
2003/04	185	5	141	76	12033	21	10793	88

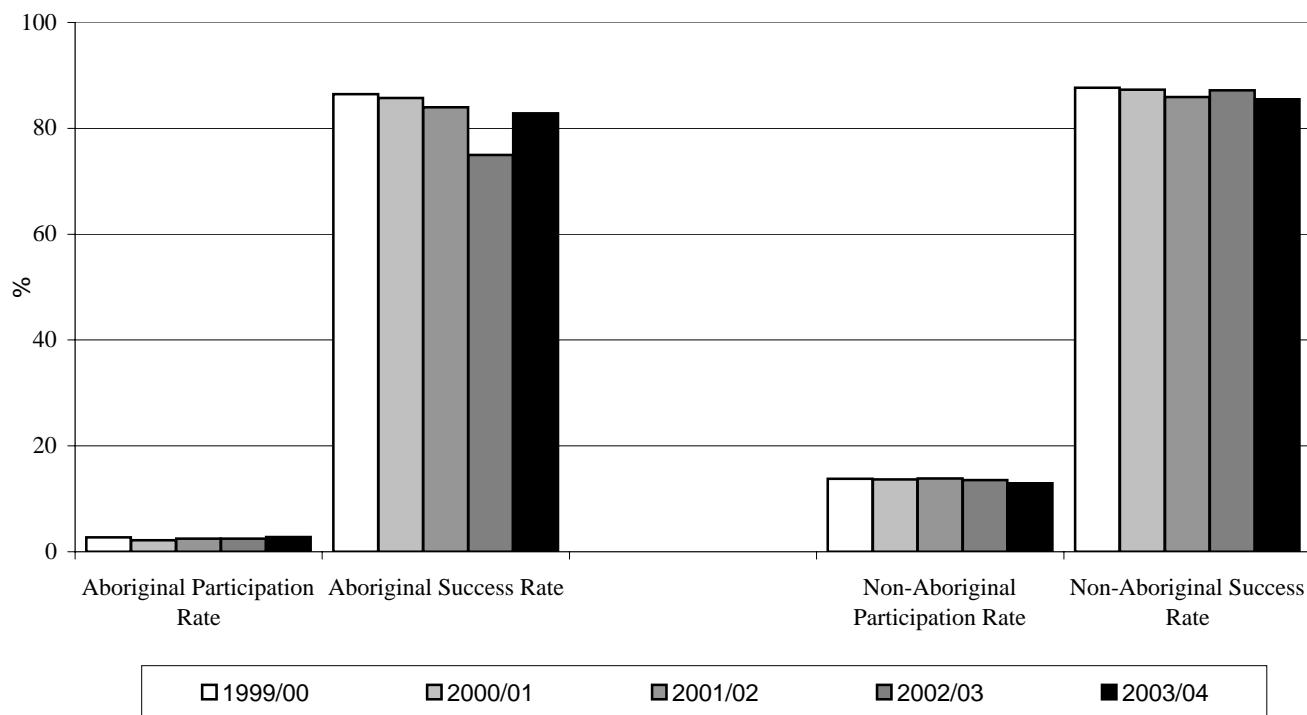
Notes:

- (1) Includes only Aboriginal students who have self-identified as being of Aboriginal ancestry (First Nations: status and non-status, Metis, and Inuit) on September 30th.
- (2) Participation number is the count of unique exam writers. Participation percent is the count of unique exam writers divided by the number of grade 12 students on September 30th. Success Rate is the students who received a grade of C- or better.
- (3) "Msk" indicates that the number cannot be displayed as it is based on fewer than five students (in accordance with the Freedom of Information and Protection of Privacy Legislation).

Provincial Overview Comments:

- (1) The number of Aboriginal students participating in Chemistry 12 continues to increase.

Physics 12 Participation and Success Rate, 1994/95 - 2003/04
Province - Public Schools Only



School Year	Aboriginal				Non-Aboriginal			
	Participation Rate		Success Rate		Participation Rate		Success Rate	
	#	%	#	%	#	%	#	%
1994/95	49	3	33	67	5704	13	4870	84
1995/96	48	2	36	75	6057	14	5223	84
1996/97	51	2	41	80	6015	13	5171	84
1997/98	43	2	40	93	6456	13	5704	86
1998/99	58	2	44	76	6999	14	6140	86
1999/00	74	3	64	86	7257	14	6500	88
2000/01	63	2	54	86	7265	14	6464	87
2001/02	75	2	63	84	7516	14	6619	86
2002/03	80	2	60	75	7383	14	6613	87
2003/04	99	3	82	83	7248	13	6283	85

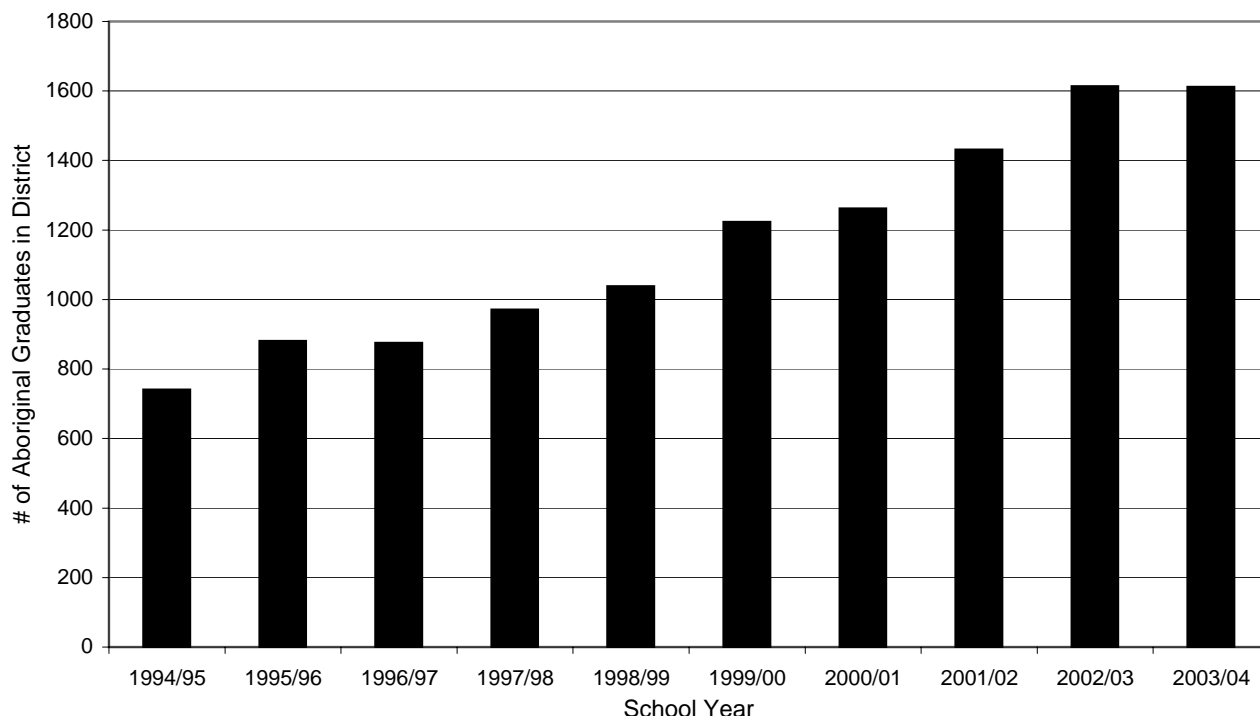
Notes:

- (1) Includes only Aboriginal students who have self-identified as being of Aboriginal ancestry (First Nations: status and non-status, Metis, and Inuit) on September 30th.
- (2) Participation number is the count of unique exam writers. Participation percent is the count of unique exam writers divided by the number of grade 12 students on September 30th. Success Rate is the students who received a grade of C- or better.
- (3) "Msk" indicates that the number cannot be displayed as it is based on fewer than five students (in accordance with the Freedom of Information and Protection of Privacy Legislation).

Provincial Overview Comments:

- (1) The number of Aboriginal students participating in Physics 12 continues to increase.

***Number of Aboriginal Graduates Receiving a Dogwood, 1994/95 - 2003/04
Province - Public Schools Only***



School Year	Number of Aboriginal Graduates Receiving a Dogwood
	Provincial Total
1994/95	740
1995/96	880
1996/97	875
1997/98	970
1998/99	1038
1999/00	1223
2000/01	1261
2001/02	1431
2002/03	1613
2003/04	1611

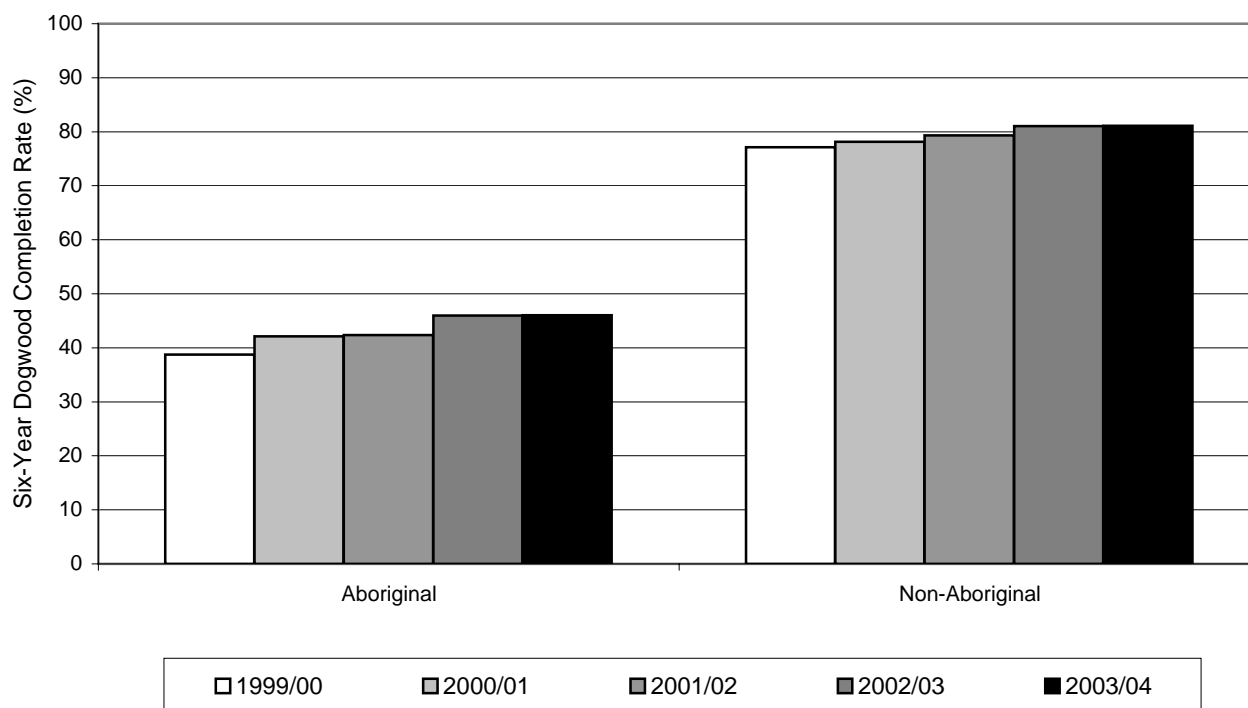
Notes:

- (1) Includes only Aboriginal students who have self-identified as being of Aboriginal ancestry (First Nations: status and non-status, Metis, and Inuit) on September 30th.
- (2) Includes any person who has received a Dogwood (such as adult graduates who have received a Dogwood, not an Adult Dogwood, and those who have taken more than six years to receive a Dogwood).
- (3) May not match previous reports. Graduates are sometimes not recognized as receiving a Dogwood until after the date of publication. Such graduates are added to the count for their graduation year.
- (4) "Msk" indicates that the number cannot be displayed as it is based on fewer than five students (in accordance with the Freedom of Information and Protection of Privacy Legislation).

Provincial Overview Comments:

- (1) The number of Aboriginals students receiving a Dogwood Diploma continues to increase.

Six-Year Dogwood Completion Rate, 1999/00 - 2003/04
Province - Public Schools Only



School Year	Provincial Six-Year Dogwood Completion Rate (%)	
	Aboriginal	Non-Aboriginal
1999/00	39	77
2000/01	42	78
2001/02	42	79
2002/03	46	81
2003/04	46	81

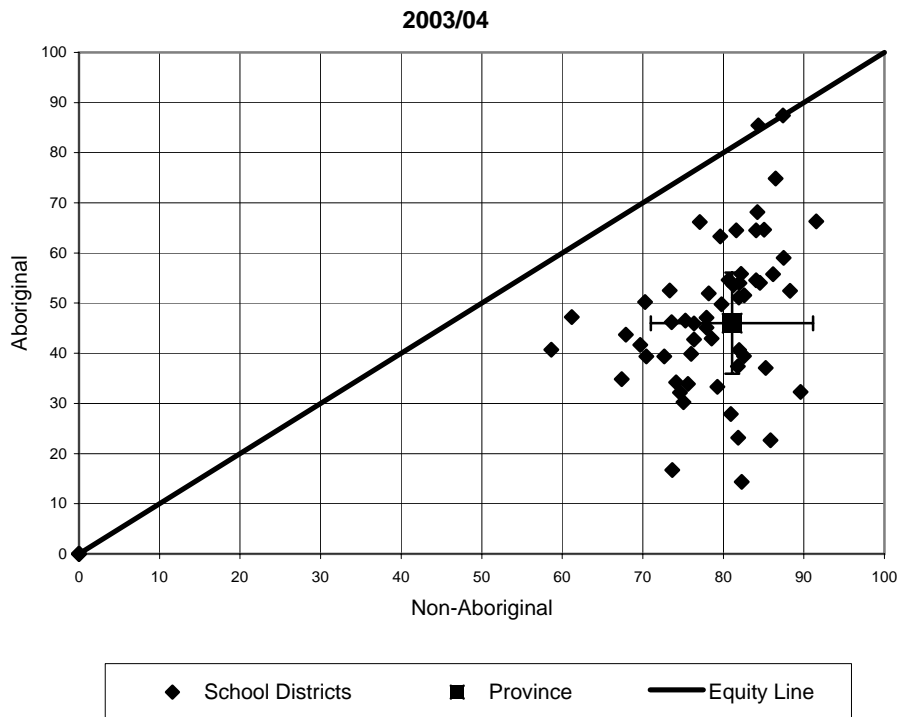
Notes:

- (1) Includes only Aboriginal students who have self-identified as being of Aboriginal ancestry (First Nations: status and non-status, Metis, and Inuit) on September 30th.
- (2) "Msk" indicates that the number cannot be displayed as it is based on fewer than five students (in accordance with the Freedom of Information and Protection of Privacy Legislation).

Provincial Overview Comments:

- (1) The Aboriginal Six-Year Dogwood Completion Rate has increased from 42% in 2001/02 to 46% in 2003/04.
- (2) The Aboriginal Six-Year Dogwood Completion Rate has increased approximately 7% over the last five years, almost twice that of the non-Aboriginal Six-Year Dogwood Completion Rate.

Six-Year Dogwood Completion Rate, 1999/00 - 2003/04



School Year	Provincial Six-Year Dogwood Completion Rate (%)	
	Aboriginal	Non-Aboriginal
1999/00	39	77
2000/01	42	78
2001/02	42	79
2002/03	46	81
2003/04	46	81

Notes:

- (1) Includes only Aboriginal students who have self-identified as being of Aboriginal ancestry (First Nations: status and non-status, Metis, and Inuit) on September 30th.
- (2) Not all public school districts are displayed as the numbers are based on fewer than five students (in accordance with the Freedom of Information and Protection of Privacy Legislation).

Provincial Overview Comments:

- (1) Graph represents the 2003/04 school year only.